

DISCOVERY

KYUSHU UNIVERSITY

GUIDEBOOK 2014-2015



KYUSHU UNIVERSITY



Contents

	A Message from the President	4	
	Mission, Vision	5	
	History	6	
Academics	KIKAN Education	9	
	Programs for Leading Graduate Schools	10	
	The 21st Century Program	12	
	Robert T. Huang Entrepreneurship Center (QREC)	13	
Research	Carbon-Neutral Energy Research for the Creation of a Sustainable and Environmentally-Friendly Society	15	
	Next-Generation Fuel Cell Research for a Low-Carbon Society and Ultimately a Solution to Global Warming Ultra-efficient, Next-Generation Compact Wind Power System in the Shape of the Wind Lens	16	
	Promoting Big Science with Advanced Particle Physics Research New Cancer Treatment by Eradication of Cancer Stem Cells	17	
	World's First Taste Sensor to Detect and Identify Flavors Groundbreaking organic materials and devices for creating future electronics	18	
	Support Programs for Women Researchers Program for Promoting the Enhancement of Research Universities Development of Research Administrators	19	
	Industry / Community Partnerships	Industry-University-Government Collaboration Management Center (IIMAO) Itoshima: ICT-Based Monitoring Town Project	20 21
	International Exchange	Coordination with Overseas Universities (Re-Inventing Japan Project)	22
Japan in Today's World Program / International Student Enrollment		23	
Study Abroad / Project for Promotion of Global Human Resource Development (School of Agriculture)		24	
Research Center for Korean Studies / European Union Institute in Japan, Kyushu / Center for Asia-Pacific Future Studies		25	
International Cooperation Projects		26	
International Student and Researcher Support Center / Overseas Offices		27	
University Hospital	Kyushu University Hospital: Leading Japanese Medicine, Transmitting It to the World	28	
University Library	Kyushu University Library: Learning, Teaching, and Research Hub	30	
Student Life	Campus Calendar / Student Interviews	32	
Student Affairs	Dormitories and Financial Aid	34	
	Job and Career Support / Career Paths and Employment	35	
Campus Relocation	Relocation Plan Ito Campus Overview	36	
	University Organization	38	
	Kyushu University by the Numbers	40	
	Access	42	

Kyushu University

—A University That is Moving into the Future

Over the more than a century since its foundation in 1911, Kyushu University has become one of the leading universities in Japan through the implementation of an excellent education and research program that has produced talented individuals who take an active role in world affairs.

Based on the great efforts and achievements of our alumni, Kyushu University is well prepared to move into the future. The relocation to the Ito Campus is moving forward with the goal of building a sustainable society by creating a facility that will allow for the study of next-generation energy systems that will actively use natural energy resources. The relocation has been proceeding smoothly and is expected to be completed by the Academic Year 2018. With this future-oriented campus as its core, Kyushu University is focusing on a variety of exciting areas, notably in education, research, and health care.

Kyushu University began a new education system in the Faculty of Arts and Sciences in Academic Year 2014 with the goal of helping all students “learn about learning and thinking” and to acquire basic knowledge and skills before moving on to study in their majors.

From the perspective of research, it is our principle to value free-flowing research activities in the schools and faculties of the various academic disciplines and to respect their basic characteristics. We are also aware of our responsibility, as a comprehensive university, to support basic research in the many disciplines currently doing high-level work at the university and at the same time to foster new academic disciplines. Above all, we must be a university where young researchers who will play a leading role in these disciplines can find the motivation and support to move us into the future.

In the sphere of health care, Kyushu University aims to actively promote the development of basic research in medical science, dentistry, and pharmacology that will be useful in clinical practice. The University Hospital, as the core hospital in Western Japan, is working to further highly advanced medical treatment and to fulfill its mission as an international medical institution open to the people of Asia.

Kyushu University aims to lead the world in various fields and to make a great leap forward. As a global center of knowledge focused on Asia, we hope to attract more international students and to keep growing together with Fukuoka city to become a university that local citizens can take pride in and rely on.

Over the centuries the environments in which universities find themselves, at home and abroad, have changed dramatically. Amid these changes, Kyushu University has taken constant steps forward, following its clear vision and direction, while meeting the various demands of the times. Kyushu University will continue to keep tackling the issues of the future.

Chiharu Kubo

President, Kyushu University



The Mission of Kyushu University

With continual and autonomous reforms,
while guaranteeing educational quality
at an international level,
we will aim to be a top-level education
and research hub marked by vitality
and a willingness to address future issues.

The Vision

- 1 | A university that responds to societal issues
- 2 | A university that promotes the highest levels of research
- 3 | A university that cultivates active, life-long learners
- 4 | A university that fosters strong, determined leaders for the future
- 5 | A university that contributes to both the local community and global society by providing advanced medical treatment
- 6 | A university that offers superb learning and research environments
- 7 | A university that leads the local community and global society
- 8 | A university that sustains growth through spontaneous reforms
- 9 | A university that advances the accumulation of knowledge and its intergenerational and societal sharing

History



Kyushu University's founding can be traced back to the establishment of a medical school for the Fukuoka feudal clan in 1867. The facility's medical school and clinic were maintained and later became the Shuyukan Clinic, Fukuoka Hospital, Fukuoka Prefectural Fukuoka Medical School and Fukuoka Prefectural Fukuoka Hospital; in 1903, these merged to form the Kyoto Imperial University Fukuoka Medical School, the immediate predecessor of the university. In 1911, the school was renamed Kyushu Imperial University and went on to build 100 years of history and tradition as a contemporary center of knowledge.

2012

Ceremony commemorating the Centennial anniversary

2011

Centennial anniversary of the university's founding

2005

Ito Campus opened

2004

Incorporated as a national university corporation

2003

Integrated with Kyushu Institute of Design

1968

Kyushu Institute of Design established

1967

Faculty of Dentistry established

1964

Faculty of Pharmaceutical Sciences established

1961

50th anniversary of the university's founding

1949

Faculties of Law, Economics, Letters and Education established and became part of Kyushu University

1947

Name changed to Kyushu University

1939

Faculty of Sciences established

1924

Faculty of Law and Letters established

1919

Colleges reorganized as the Faculty of Engineering and Faculty of Medicine
Faculty of Agriculture established

1911

Kyushu Imperial University established

(consisting of the College of Engineering and College of Medicine)
*fourth imperial university after Tokyo, Kyoto and Tohoku

1903

Kyoto Imperial University Fukuoka Medical College established

1888

Fukuoka Prefectural Fukuoka Hospital established

1879

Fukuoka Prefectural Fukuoka Medical School established



Ceremony commemorating Centennial anniversary (2012)



Ceremony commemorating the opening of the Ito Campus (2005)



Ceremony commemorating the integration with Kyushu Institute of Design (2003)



Faculty of Pharmaceutical Sciences at the time of its establishment (1964)



Entrance to the Faculty of Agriculture (around 1924)



Faculty of Law and Letter's main building (1925)



Ceremony commemorating 50th anniversary (1961)



Entrance to Kyushu Imperial University College of Engineering (1914)



Albert Einstein visits the university (1922)

Broad-Based Learning and Deep Specialization: Quality Education for True Leadership

Kyushu University's Education Charter sets forth the ideals of humanity, social responsibility, global citizenship and the advancement of knowledge. And the university has sent forth graduates who have cultivated these ideals to play leading roles on the world stage. As global society develops in an era of ongoing change, the university constitutes an educational environment for cultivating true leaders capable of flexibly accommodating even the most challenging situations.



KIKAN Education for Generating Questions and Creating New Knowledge

Undergraduate degree programs at Kyushu University consist of KIKAN Education and a specialized area of study. KIKAN Education exposes students to a variety of options before specialized study begins, and it helps them develop a well-rounded base of knowledge and broad perspectives. The goal is to foster an attitude and

orientation (a basis) for learning how to learn and how to think as an active, lifelong learner. The curriculum is therefore designed to establish a way of learning and thinking, in which students themselves learn to pose their own questions and create and discover new knowledge.

KIKAN Education: Content and Objectives

Study period	First year	From second year
Units	36 units	12 units (depends on department)
Location (campus)	Ito Campus	Campus of specialized area of study
Curriculum objectives	Transition to learning as a university student: from a passive to an active learning style and from an emphasis on knowledge to an emphasis on thought. Students develop a basic orientation to learning at the college level and acquire related knowledge.	Students acquire perspectives and knowledge that transcend their respective areas of specialization based on changes in their own awareness and interests occurring as the result of study and experience.

KIKAN Education Instills Mindset and Orientation for Active Learning

Improving Thinking Skills

KIKAN Education Seminar

Dialogue-based seminars encourage students to continually engage in questions and make their own observations to further educational goals.

Interdisciplinary Collaborative Learning of Social Issues

Mixed groups of science and humanities students gain the ability to work together to solve problems while participating active debate.

Nurturing a Healthy Body and Mind

Subjects on Health and Sports

Students acquire a basic understanding of how to maintain and promote bodily health and stamina as well as methods for putting that knowledge into practice, polishing both body and mind through sport.

Acquiring Broad, More Sophisticated Knowledge

Subjects for Languages and Cultures

Students acquire the language ability needed to collaborate in a foreign language, gain a more international awareness and develop a greater understanding of cultural diversity.

General Subjects

Individual abilities and ideas are cultivated through diverse course formats and broad-ranging themes that cover both the sciences and the humanities.

Subjects in Humanities and Social Sciences

Students gain a foundation in the humanities and social sciences, receive exposure to related disciplines and study a broad range of research methodologies and theories.

Subjects in Science

Students acquire a foundation in the sciences, gain basic skills needed for specialized research and engage in broad study of the various scientific disciplines.

Active Learner at a Deeper Level

KIKAN education subjects for students in the second year and above

These courses are intended for students who have completed their first year of study. They serve to further broaden intellectual curiosity and provide students with useful knowledge and skills for their respective areas of specialization. The courses add greater breadth and depth to students' general knowledge.

Faculty of Arts and Science—Achieving High-Quality KIKAN Education (Dean: Shun-ichi Maruno)

The Faculty of Arts and Science is the body responsible for KIKAN Education, which plays a central role in undergraduate education. KIKAN Education is administered under a system in which the entire university is mobilized. Staff members participate from all of Kyushu University's faculties, and members affiliated with the Faculty of Arts and Science coordinate directly with the schools and graduate

schools in crafting the curriculum, serving as managers committed to maintaining an effective administrative framework. Led by the Faculty of Arts and Science, Kyushu University fosters exceptional graduates capable of demonstrating leadership in a variety of fields inside and outside Japan, and this gives KIKAN Education, which constitutes the university's backbone, dedication and passion from new perspectives.



Graduate School for Global Leadership: Kyushu University Programs for Leading Graduate Schools

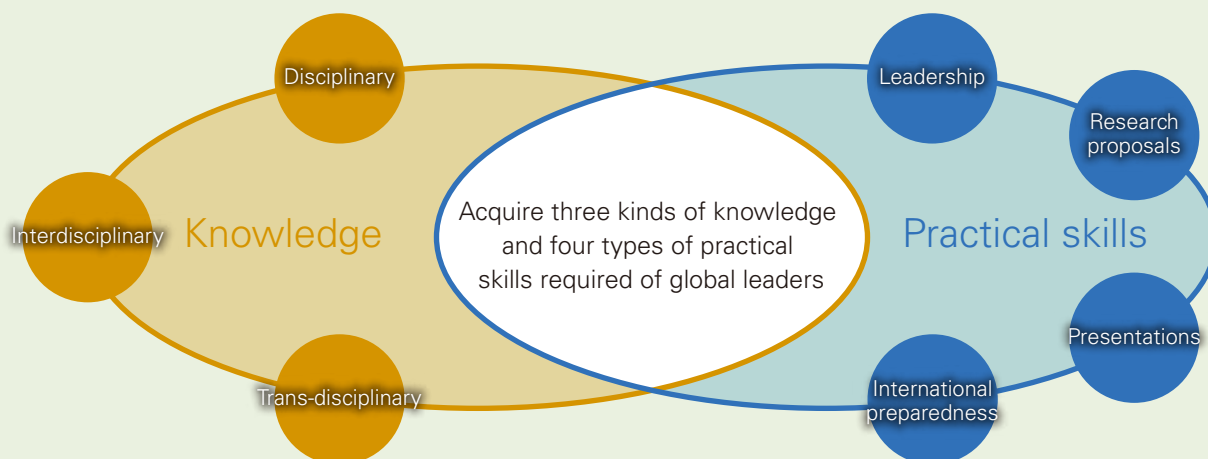
Kyushu University's Program for Leading Graduate Schools aims to transform exceptional students into exceptional leaders capable of performing on the global stage. The program offers an integrated master's and doctorate degree of global standard that transcends traditional disciplinary demarcations and, with the participation of government and industry, seeks to produce outstanding graduates.

■ Graduate Education and Research Training Program in Decision Science for a Sustainable Society

The next generation of global leaders will need to possess different kinds of knowledge in tackling the problems of the future world: disciplinary knowledge within particular subject areas; a broad range of interdisciplinary knowledge to help bring about social sustainability; and new forms of trans-disciplinary knowledge for making the decisions that can lead to novel solutions. Those leaders will also require practical skills, which will include the ability to work across national boundaries, carry out research proposals, produce and give presentations, and also provide inspired leadership. The Graduate Education and Research Training Program in Decision Science for a Sustainable Society is a unique five-year integrated program that gives students the opportunity to develop these innovative forms of knowledge and skills.

Program Characteristics

- 1 Students explore the general scientific field of decision science, which is concerned with methodologies that lead to successful decisions, and students learn trans-disciplinary thinking skills.
- 2 Students participate in solutions-based joint international research and acquire practical, interdisciplinary knowledge through actual experience in the field.
- 3 Students acquire leadership skills through experience managing an organization of around 100 people via an organizational training workshop.



Development of Global Research Leaders in Molecular Systems for Devices and Establishment of an International Education and Research Center

The course "Advanced Graduate Course on Molecular Systems for Devices" aims to cultivate global super leaders equipped with management leadership abilities and preeminent research skills. With these skills in hand, they will be qualified to become the core of next-generation science and technology in Japan. The education program has been broadly divided into three stages:

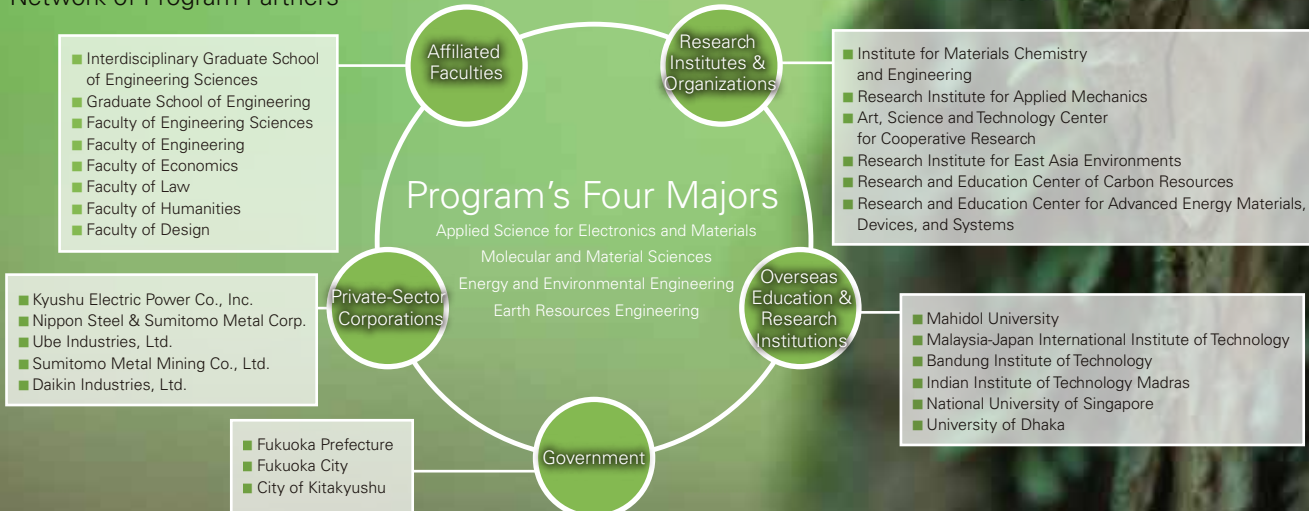
Ito Campus, International Liaison Campus, Ito Science Park. This comprehensive, five-year integrated doctoral course enables the acquisition of basic science, international and industrial perspectives, and the fostering of human resources capable of being leaders in any area of industry, government, and academia.



Advanced Graduate Program in Global Strategy for Green Asia

This program fosters science and technology leaders who will help bring about a green Asia—an Asia that is both ecologically sound (reduced consumption of resources) and economically dynamic. Graduate students major in resource engineering, molecular and material sciences, or system engineering, directing environmental science/technology, and the fundamentals of economics and sociology in an integrated manner while accumulating practical experiences in Japan and overseas. Through the program, students gain the skills and abilities required of leaders in science and technology, including research, practice, system landscape, global perspective and leadership at the same time as developing professional networks throughout Asia.

Network of Program Partners



The 21st Century Program—An Interdisciplinary Undergraduate Program That Transcends Conventional Demarcations

The 21st Century Program is an interdisciplinary curriculum geared to shaping capable people who will lead through this century. The aim is to foster “highly specialized generalists” capable of identifying problems, defining issues and generating solutions at an advanced level and from a broad frame of reference for the various challenges facing society and humankind in general in the 21st century.

Four Educational Principles of the 21st Century Program

Develop Human Resources for the 21st Century

What society needs is a new form of knowledge—one capable of adapting to various changes and that can transcend existing knowledge demarcations toward quickly identifying and solving problems. The goal of the 21st Century Program is for students to acquire and apply such new knowledge and in doing so serve as this century’s leaders in contemporary arenas—from politics and economics to science, technology, society and culture.

Highly Specialized Generalists

The 21st Century Program conceives of individuals that acquire this new form of knowledge as highly specialized generalists. Such generalists possess specialized knowledge in a particular field, but they are also capable of crossing over into related disciplines and integrating the various subject areas from a broad standpoint. Highly specialized generalists are therefore the people who can act as a bridge between the specialization that is typical of academic knowledge and society at large.

Creative Knowledge and Foundational Knowledge

Toward promoting the type of knowledge that can spark creativity, the 21st Century Program encourages students to learn independently. To be able to identify and solve problems themselves, students need to devote their efforts toward independent learning that creatively utilizes the whole of the university’s course offerings. Taking proper advantage of this independence demands that students acquire foundational knowledge, which is necessary to understand, interpret and solve the problems facing contemporary society, and that they acquire the communication and language skills to express it.

Open to the Outside World

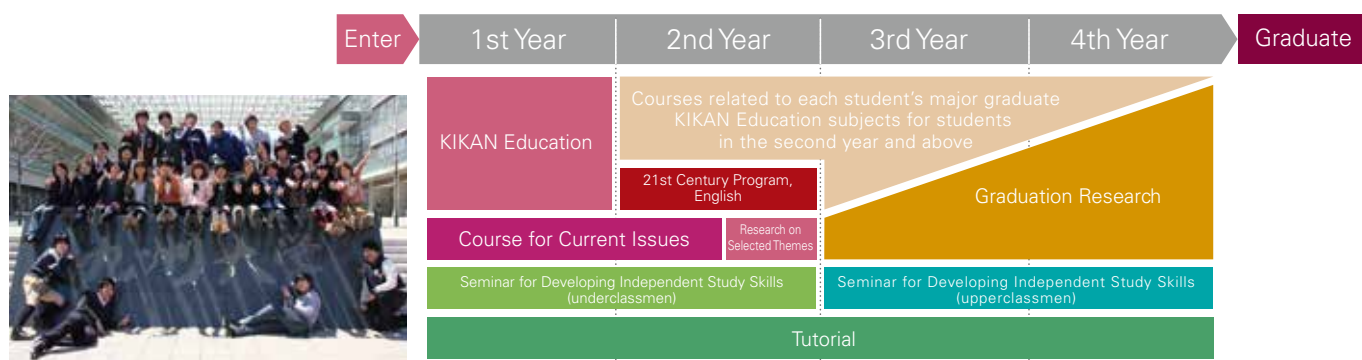
The outside world here refers to society. Even within courses, our mindset is to build up thorough-going students who positively interact in society, tackle social problems, and are capable of applying university knowledge to those conundrums facing communities. But being open to the outside world also means going beyond the framework of one’s own country. As globalization continues, it will be necessary to think and act from an international perspective and people that are able to do so effectively are likely to play an increasingly important social role. The 21st Century Program aims to nurture such individuals.

Tailor-Made Educational Program

With the 21st Century Program, students may in principle take courses offered in any department at Kyushu University. In effect, the students themselves decide what they study. Students adopt a broad perspective and take classes according to a study plan they create based on their interests and aims. Some set requirements do exist, but other than those, students may tailor their curriculum to meet their own needs. With this approach, it is expected students that demonstrate the self-initiative and independence they will need in their future careers.



Curriculum construction of the 21st Century Program



Unique Program for Greater Challenge and Creativity

Robert T. Huang Entrepreneurship Center (QREC)

The center offers progressive and systematic entrepreneurship education open to all students of the university and conducts academic and research activities in partnership with other universities and institutions both inside and outside of Japan.

Integrated and Systematic Undergraduate/Graduate Entrepreneurship Education

The center offers the first systematic entrepreneurship education program in Japan integrated for both undergraduate and graduate students.

Fusion of Entrepreneurship Education, MOT Education, and More

Leadership skills are developed through entrepreneurship education in the broadest sense.

Global Orientation

Optimal resources and exchange opportunities are provided through partnerships with major universities and other institutions around the world, and international coursework will be offered through coordination with the departments involved in international studies.

Combining Disciplines, Ensuring Diversity

Through mutual collaboration with university departments, cross-disciplinary projects are planned and students of diverse backgrounds are brought together.

Practical Industry Collaborations

Students are encouraged to participate in international student networks. There is active engagement with industry, with human resources and educational opportunities provided for hands-on learning.

Addressing Contemporary Needs

Contemporary diversity and new trends are addressed, including business in emerging nations and social entrepreneurship.

Kyushu University, Robert T. Huang Entrepreneurship Program (QREP)



With the support of Robert T. Huang, founder of Synnex Corporation in US and a graduate of Kyushu University, this program seeks to engender a sense of business acumen and cultivate a global perspective. Through lectures given by a diverse range of instructors, including entrepreneurs working in Silicon Valley, and interactions with local students, the program provides opportunities for students to shape their own careers and kindle their drive to take on challenges.



Challenge & Creation (C&C)

The C&C is open to students in all departments, and it provides assistance and practical support for unique research projects planned by undergraduate and graduate students at Kyushu University. Students design and carry out the projects themselves, allowing them to experience real creativity.



Science Class Projects (President's Award)



"RE COSME PROJECT" for the design and commercial manufacture of sustainable cosmetics. (Excellence Award)



World-Class Research Drawing Attention across Broad Sectors

Kyushu University respects academic freedom and researcher autonomy while emphasizing free, vigorous research activities founded on the intellectual curiosity of students and faculty members. This lends dynamism and diversity to academic endeavors, and it has successfully produced a wealth of world-class research findings.



Carbon-Neutral Energy Research for the Creation of a Sustainable and Environmentally-Friendly Society



International Institute for Carbon-Neutral Energy Research (I²CNER)

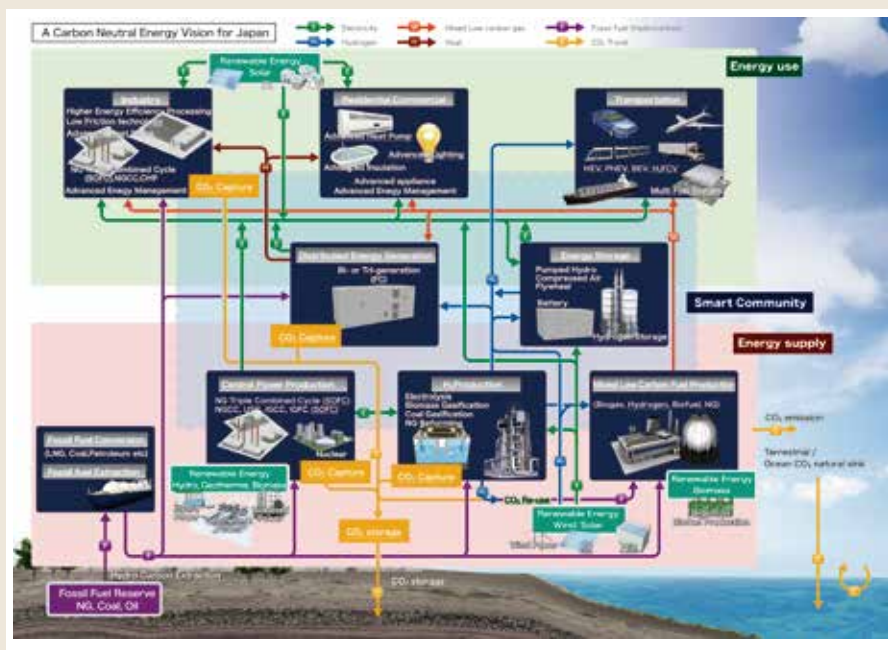
I²CNER was established in 2010 as a part of the MEXT World Premier International Research Center Initiative (WPI).

The institute's goal is to help establish a sustainable and environmentally-friendly society by conducting fundamental research for reducing CO₂ emissions and building non-fossil fuel based energy systems. I²CNER's areas of research include hydrogen production using photo catalysis, hydrogen storage, hydrogen tolerant materials, next-generation fuel cells, "greening" chemical reactions and catalysts, CO₂ capture and utilization, and CO₂ storage.

I²CNER has a satellite institute at the University of Illinois at Urbana-Champaign, and the two sites act in close coordination through joint research and personnel exchanges. Moreover, I²CNER has also established collaborative arrangements with other international universities and research institutes with the goal of working toward a carbon-neutral society. These arrangements serve to promote exchanges among researchers and interactions among the institutes themselves as well as to advance academic research through the fusion of disparate fields.



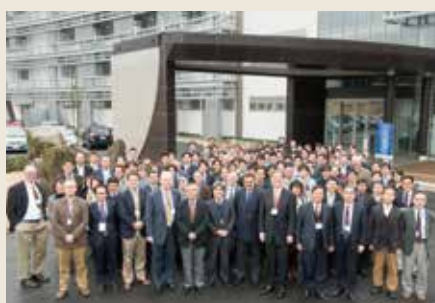
I²CNER Director Petros Sofronis



Fuel Cells Research Division laboratory



Heat and blue plasma light from high-intensity lasers



I²CNER & ACTC Joint Symposium



University of Illinois at Urbana-Champaign



CO₂ Capture and Utilization Research Division laboratory



The WPI provides concentrated support for projects to establish and operate research centers that have at their core a group of very high-level investigators. These centers are to create a research environment of a sufficiently high standard to give them a highly visible presence within the global scientific community—that is, to create a vibrant environment that will be of strong incentive to frontline researchers around the world to want to come and work at these centers.

Next-Generation Fuel Cell Research for a Low-Carbon Society and Ultimately a Solution to Global Warming

Next-Generation Fuel Cell Research Center (NEXTFC)

Selected for 2011 METI Innovation Center Establishment Assistance Program

The center's goal is the full practical viability of next-generation fuel cells, including solid oxide fuel cells (SOFCs). SOFCs are clean, highly efficient power generators, and they have garnered attention as a basic solution to current energy problems and global warming. The research center is working closely with development companies in the private sector to overcome a variety of issues, including durability and reliability as well as further improving the performance of next-generation fuel cells.



Crown Prince of Japan, Naruhito, in dispensing hydrogen to fuel cell vehicle.



Fuel cell vehicles are clean-energy vehicles that do not emit CO₂ or environmental pollutants.

Ultra-efficient, Next-Generation Compact Wind Power System in the Shape of the Wind Lens

Research Institute of Applied Mechanics

The Wind Engineering Section, Division of Renewable Energy Dynamics has developed the Wind Lens turbine as part of research into the effective use of wind energy with the aim of increasing the proportion of renewable energy in the power mix and contributing to the formation of a society run on clean energy. This wind power system offers dramatically higher generation efficiency as well as boasting quieter operations, safety and an aesthetically pleasing appearance that fits in with the landscape. Wind Lens has therefore drawn attention as the next generation of compact wind turbines.

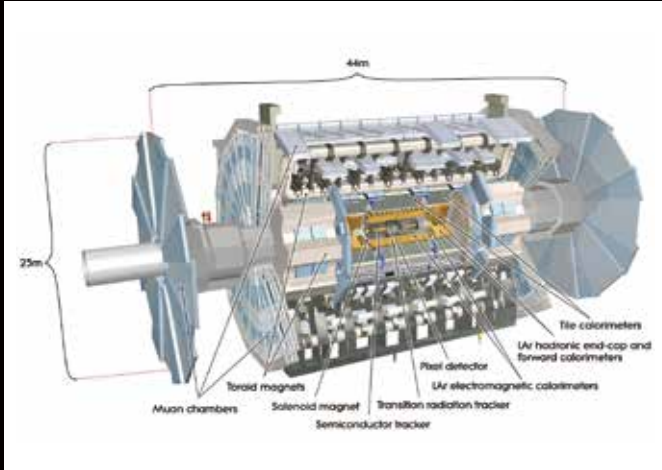


Power system experiment using Wind Lens turbines mounted on a floating platform in Hakata Bay

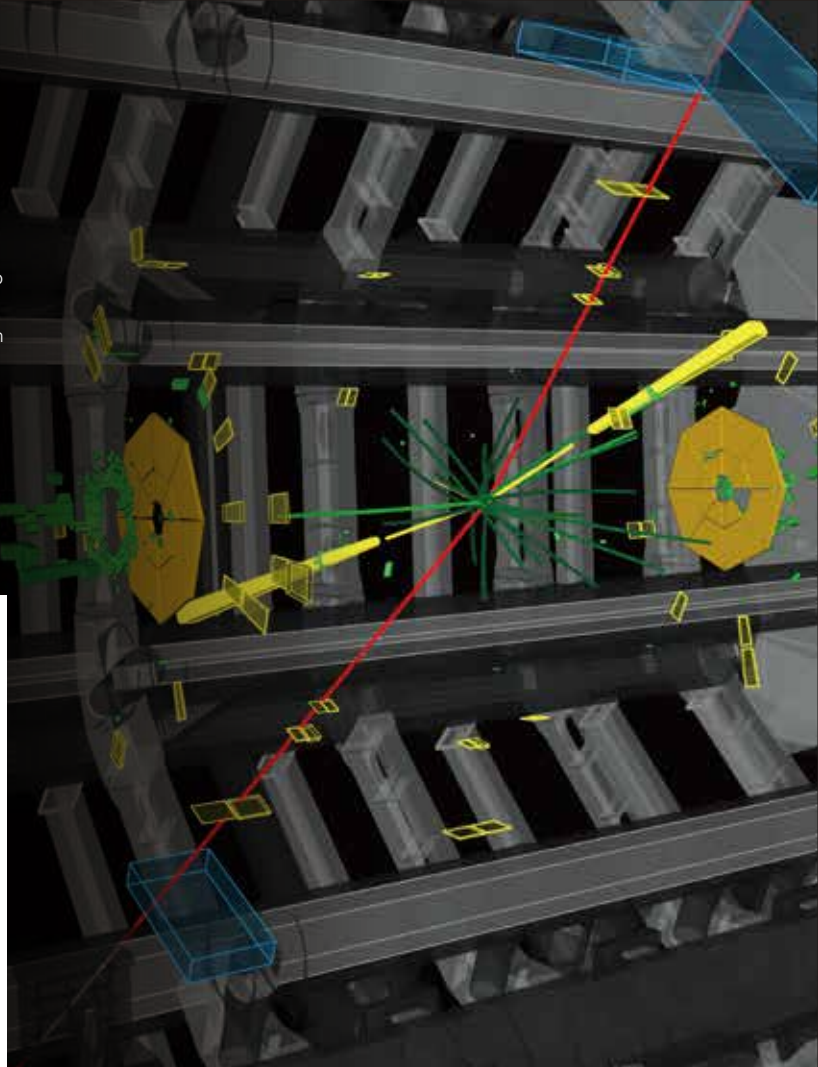
Promoting Big Science with Advanced Particle Physics Research

Research Center for Advanced Particle Physics

The Research Center for Advanced Particle Physics was established in 2012 to serve as an international research and education center for advanced particle physics. Its activities include experimental particle research through accelerator experiments, promotion of next-generation acceleration experiments and theoretical particle physics research.



ATLAS detector

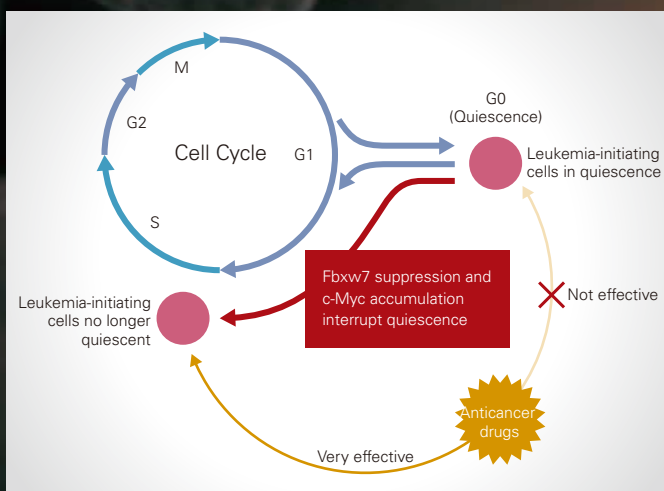


Higgs boson candidates detected in the ATLAS experiment

New Cancer Treatment by Eradication of Cancer Stem Cells

Medical Institute of Bioregulation

In order to completely treat cancer, it had been necessary to eradicate the cancer stem cells that are the source of cancer cells, but because the mechanism of long-term survival had not been clarified, there was not an effective treatment method. The center discovered a protein called Fbxw7 that holds the key to long-term survival cancer stem cells. Expectations are high for the development of a causal treatment for many types of cancers, including leukemia by blocking Fbxw7 capability.



New cancer treatment combining suppression of Fbxw7 protein and anticancer drugs (quiescence prevention treatment)



■ World's First Taste Sensor to Detect and Identify Flavors

Research and Development Center for Taste and Odor Sensing

Kyushu University has succeeded in developing the world's first sensor to detect and identify different tastes using lipid polymer membranes. The sensor can identify and evaluate tastes by means of global selectivity: it classifies the enormous number of flavorful substances into the five basic taste categories of saltiness, sourness, bitterness, sweetness and umami. The taste sensor has been commercialized by Intelligent Sensor Technology, Inc. and is used by food product manufacturers and research institutes among others. The university is also involved in R&D into aroma sensors.



Taste sensor (taste-sensing system TS-5000Z)

■ Groundbreaking organic materials and devices for creating future electronics

Center for Organic Photonics and Electronics Research (OPERA)

Adachi Molecular Exciton Engineering Project Promotion Center
(Japan Science and Technology Agency(JST) Exploratory Research for Advanced Technology (ERATO))

Organic optical devices integrate organic molecules that exhibit semiconducting properties. This research is expected to pioneer new molecular designs exhibiting new and desired functions. The Adachi Molecular Exciton Engineering project involves controlling excitonic mechanisms with new molecular designs to create high-performance photoelectric conversion elements, organic semiconductor lasers, optical and electronic storage devices, and high-performance organic LEDs. The center also works to develop this research into bio-electronics for the development of biocompatible devices.



OPERA



Broadly Supporting Research Activities, From Environment to Training

■ Career Development Support for Women Researchers with the Aim of Developing Diverse Human Resources

Office for Promotion of Gender Equality

The office functions as the coordinating organization for promoting the careers of women researchers at Kyushu University. It is involved in the "Hand in Hand" research assistant program, a support program to help women researchers further hone their skills, an awareness-raising program for the next generation and other initiatives. Further, the office has

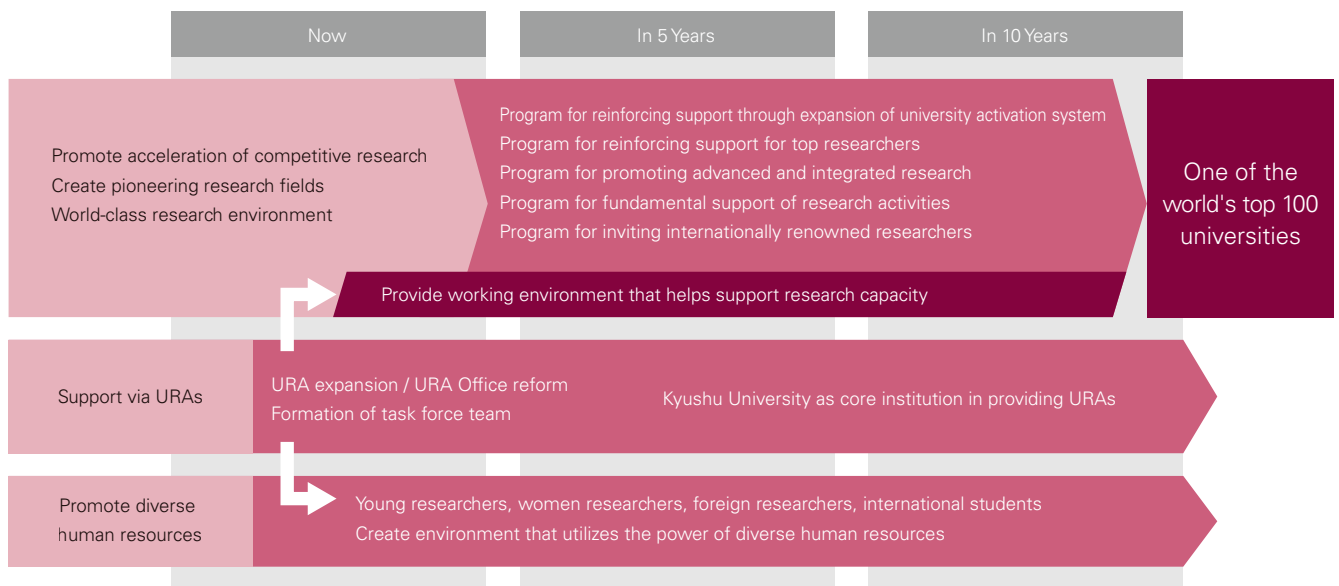
deepened its ties with outside organizations such as the Q-wea support network for women researchers in Kyushu and Okinawa to provide environments and career development support for women in the research fields with the aim of promoting gender equality and further development of human resources diversity.

■ Improving the International Competitiveness of Research through the Program for Promoting the Enhancement of Research Universities

Selected for the 2013 MEXT Program for Promoting the Enhancement of Research Universities

Kyushu University is currently enhancing its research infrastructure with the aim of becoming one of the world's top 100 universities. The initiative includes developing mechanisms for rapidly accommodating social and innovative needs, providing an environment that allows

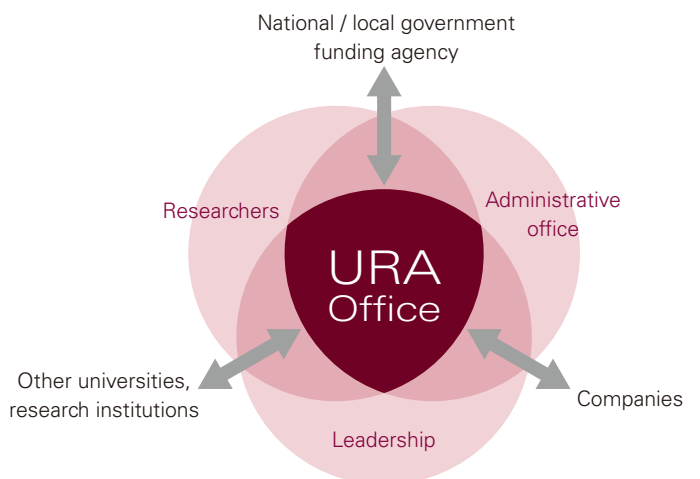
exceptional researchers to concentrate fully on their work, creating premier research centers, improving international coordination and inviting overseas research units, and training researchers through seamless systems of support.



■ University Research Administration Office to Further Activate Research Activities

University Research Administration Office (URA Office)
 Selected for 2012 MEXT program for the development of a system to secure and train university research administrators (URAs)

The URA Office provides support for the promotion of research activities and is responsible for planning research strategy, academia-industry-government partnerships, management and utilization of intellectual property, and all other aspects of research administration. It is currently focused on activating research activities and forming global centers as well as launching new programs. Since 2012, it has received funding from MEXT.



Industry-University-Government Collaboration Make Use of University Knowledge for the Community, Society and the Future

Kyushu University places emphasis on academia-industry-government partnerships in order to make maximum use of all the university's resources—from intellectual property to personnel, facilities, brands and networks—and give benefits back to society. At the same time, through academia-industry-government partnerships, the university gains knowledge of societal trends and needs, and it uses this knowledge to invigorate research and education.

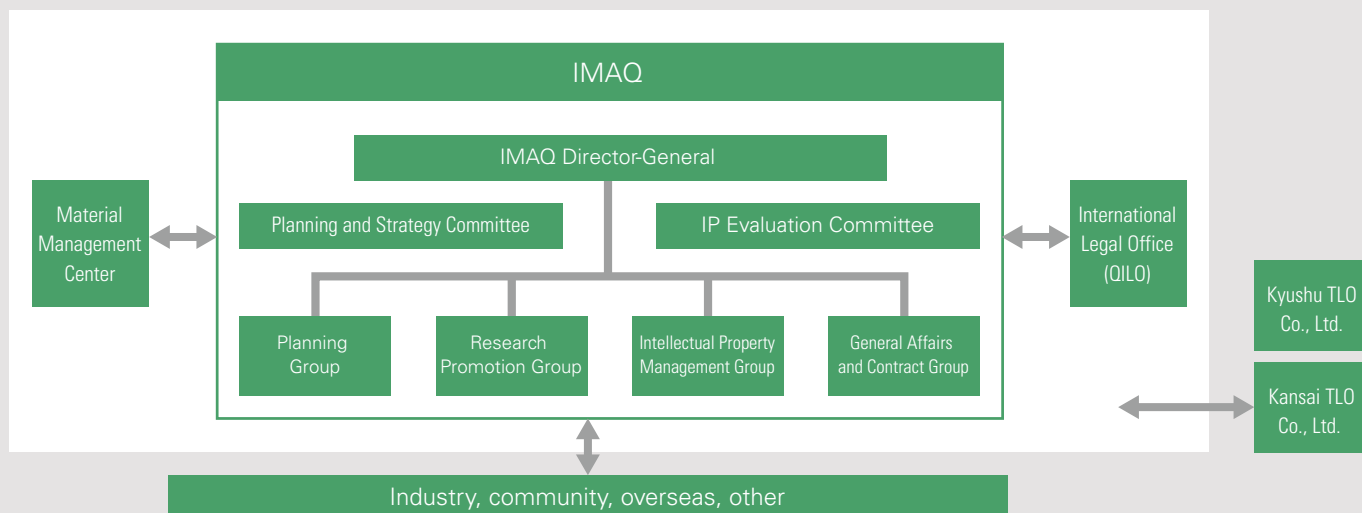


Industry-University-Government Collaboration Management Center (IMAQ)

The Industry-University-Government Collaboration Management Center (IMAQ) is the central organization for integrating promotion of academia-industry-government partnerships. As the bridge for education and research activities with the community, society and industry, the center promotes strategic utilization of intellectual property and other university resources and provides efficient services. With the goal of carrying out Kyushu University's policy of creating reliable social partnerships and first-rate international partnerships, the center intends to continue reinforcing its promotional framework into the future.

Main Roles of IMAQ

- Coordination of joint research
- Planning and management of comprehensive collaboration
- Planning and management of specific projects
- Promotion of technology transfer
- Support for university-oriented startups
- Promotion of international industry-university partnerships
- Management of intellectual property



Substantive Project for Solutions to Local Issues Itoshima: ICT-Based Monitoring Town Project

Planned by Kyushu University's System LSI Research Center and Itoshima City, the Itoshima: ICT-Based Monitoring Town Project involves the creation of a residential monitoring system. The project uses ICT from Kyushu University to establish a safe, secure, convenient environment

in Itoshima that is disaster resistant and friendly to seniors, children and women. The project was selected for the 2013 Ministry of Internal Affairs and Communications ICT Town Development Promotion Program.

Issues Facing Itoshima



Itoshima

Daytime residents: seniors, children, expectant mothers, homemakers

15,000 people within 30 km of Genkai Nuclear Power Plant	Increase in residents with difficulty moving about	Stimulate local business and enhance retail environment
Safe evacuation of residents	Settlement of families with small children	Low birthrate and aging population
Increase in dual-income families	Community development for senior health and well-being	Maintain community bus lines and increase use



Monitoring Itoshima with ICT to Keep the Community Safe and the Economy Moving

1

Evacuees

(Disaster preparedness drill)

- Confirm presence at evacuation shelters in real time
- Real-time confirmation of evacuated parents and children; provision of evacuation routes
- Make public transportation free
- Create information infrastructure to deal with loss of cards and other portable media

2

Shopping Assistance

(Mobile markets in areas lacking convenient shopping)

- Provide advertising information and offer remote order taking
- Reduce cost of accessing consumers for vendors [1/10 cost of distributing fliers; peddler cost reduced 10%]

3

Elderly Residents

(Senior Club)

- Confirm participation in Senior Club events
- Identification in emergencies

4

Children

(Preschool and schoolchildren)

- Contact parents or guardians when children arrive at or leave school
- Manage exit for after-school children's clubs or child-care centers

5

Public Transportation Users

(Community Buses)

- Reduce operation costs of community buses [reduce cash management and ticketing expenses]
- Low-cost bus locator system [provides information on bus locations]



IC Chip
(integrated circuit capable of safely storing a large amount of data)

IC Cards as Effective Solution

IC cards are provided to seniors, children, women and other residents. The cards are employed for the safety of seniors and children, and they are used in such situations as travel on community buses, disaster preparedness drills and safety confirmation activities.

IC Card

1. Information Bank

The cards contain identification relating to such matters as keys, tickets, passes and money—equivalent to 90 paper pages.

2. Identification and Rights Confirmation

Identity can be confirmed along with right to receive services.

3. Highly Secure

A dedicated reader is required to read data on the cards.

Enhancing International Exchange Programs as a Global Leader in Education and Research

Leveraging its geographic and historical features, Kyushu University has built a foundation as one of the premier education and research centers in Asia. From this basis, we intend to continue training exceptional people to shape the future in even more fields of endeavor.

Bolstering Global Development Potential through Coordination with Overseas Universities and International Education

Through coordination with universities and education programs in Asia, the United States, Europe and other parts of the world, Kyushu University is involved in a program, Re-Inventing Japan Project, to sustain global development potential toward producing graduates who will become key players on the world stage. Within an international framework to ensure the quality of its higher education, the university operates a variety of programs for Japanese students wishing to study overseas and for the strategic acceptance of international students.

Graduate School Collaborative Education Program for Global Human Resource Development in Energy and Environmental Engineering

In cooperation with Shanghai Jiao Tong University and Pusan National University, this program promotes the development of advanced researchers and engineers capable of performing globally in scientific and technological approaches to energy and environmental issues. Upon completion of six months' overseas study, students are awarded double degrees from Kyushu University and the partner institution.

Spiral Model of Collaborative Education: Seeking a Balance Between Universality and Diversity with a Legal Mindset

Adopting legal methodology, the program seeks to develop experts who have a proper grasp of universality, understand the distinctive character of ASEAN countries as well as local diversity and who can serve as a bridge between Japan and the region. In collaboration with partner institutions in ASEAN nations, a comprehensive set of programs is offered, including short-term exchanges, semester-length exchanges and double-degree programs.

ASEAN-Japan BUILD-UP Cooperative Education Program for Global Human Resource Development in Earth Resources Engineering

This program cultivates talented individuals that are capable of performing globally under a cooperative Japan-ASEAN framework in earth resources engineering—an academic field that is involved in land and marine resource development as well as being related to environmental problems. The program consists of a number of collaborative education programs, such as international internships and programs to support student exchange and nurture advanced technical and research leaders.

EU-Japan Advanced Multidisciplinary Master Studies Program (EU-JAMM)

The program is intended to foster students in a framework of international cooperation to take on problems facing Japan, the EU and the international community more generally through comparative analysis of Japan and the EU from a broad interdisciplinary perspective that encompasses the humanities, social sciences, natural sciences and other disciplines. The consortium is made up of four Japanese universities and six universities in the EU, and after one year of study abroad the partner universities award a double degree.

International Orientation: Attracting Students from almost 80 Countries and Regions

Kyushu University works collectively and systematically with international students at all stages, from enrollment to career advice. The University has been selected by the Ministry of Education, Culture, Sports, Science and Technology (MEXT) for the 2014 Top Global University Project and working even harder to increase international student enrollment.

Short-Term International Student Programs

Japan in Today's World (JTW) Program

This program consists of short-term 10-month study-abroad programs for students mainly from major overseas universities that have student-exchange agreements with Kyushu University. Students take classes in such subjects as Japanese culture, economics and law offered by the International Student Center. The classes are taught in English, though there is also the option of attending Japanese-language classes.

Japan Language and Culture Course (JLCC)

This is a one-year short-term study-abroad program for students enrolled at overseas universities majoring in fields related to the Japanese language and culture. It is intended to help students improve their language proficiency and further their understanding of Japanese society and culture.

Asia in Today's World Program

This program is for international students from Asia, North America, Europe and other regions, and it is held from the end of June to the beginning of August. It consists of a Japanese-language course and an Asian research course taught in English. The Asian research course is also open to Japanese students as a regular undergraduate course.

ASEAN in Today's World Program

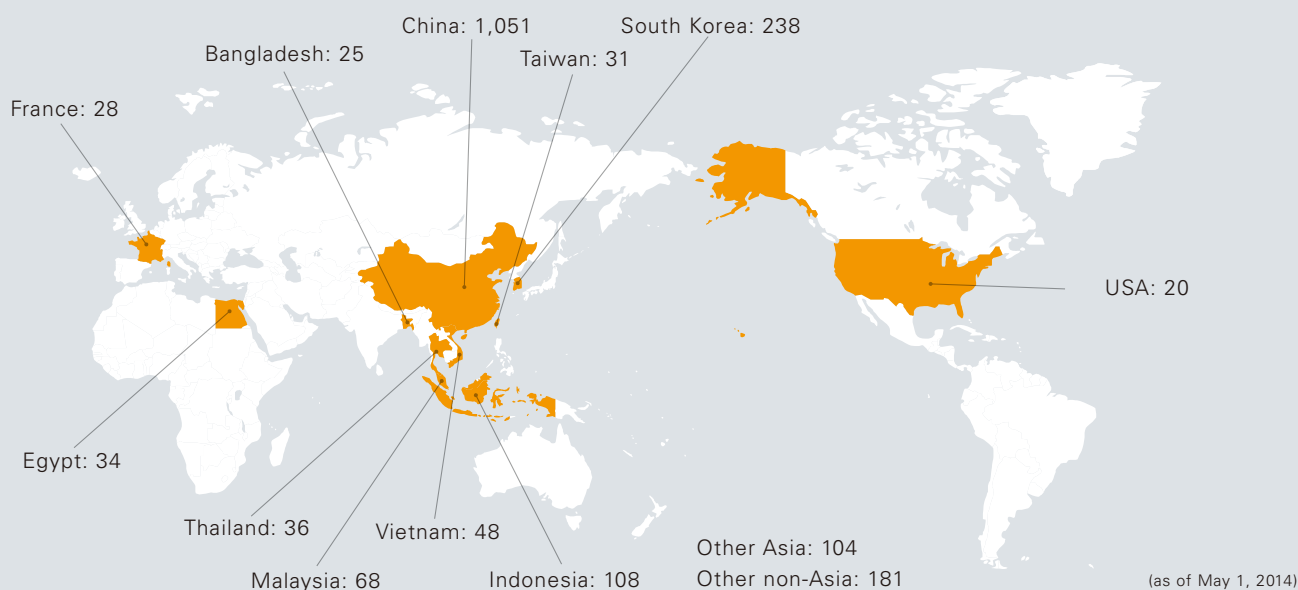
This two-week program in the spring is offered jointly with prominent universities in the ASEAN region at their campuses. Students select an introductory Asian-language course and ASEAN research course. Kyushu University students receive undergraduate course credit for the program.

International Student Enrollment at Kyushu University

Students from almost 80 countries and regions

Total Student body: 18,846

International students: 1,972



Studying Abroad to Gain a Global Perspective

Short-Term Language Programs

These programs are part of international exchange initiatives financed by the university-wide fund of Kyushu University. Students go to South Korea and China for three weeks of language tuition. These programs are intended to motivate students to participate in longer-term exchange programs and help them improve their language skills for such ventures.

Silicon Valley English-Study Program

English training is held as a part of the Studies in American Language program at our partner institution San José State University. Full backup support for this program is provided by our California office.

JASSO Student Exchange Support Program (Graduate Scholarship For Degree Seeking Students)

The Japan Student Services Organization implements a MEXT program for long-term study-abroad support in the form of a student-exchange support system for individuals studying abroad for longer periods of time. Students undertaking studies at an overseas university for one year or more toward earning a master's or doctorate degree are eligible to receive scholarships and tuition subsidies.

Promoting Individuals Who Can Take on Challenges and Perform on the Global Stage

Kyushu University School of Agriculture Program: Development of AgriBio Leaders with an International Perspective

Offered by the university's School of Agriculture, this program was selected in 2012 for the MEXT Project for Promotion of Global Human Resources Development, which is aimed at promoting the globalization of university education. The program seeks to nurture leaders in the field of agricultural biotechnology who have an international perspective as well as a broad knowledge of next-generation technology in this area and are capable of helping solve global-scale problems.

Basic Program Elements

- English Skills Enhancement Program (Basic Class / Advanced Class)
- Overseas Program (Overseas English Training Program / Problem-based Learning Program)
- In joint classes with the International Course, students acquire broad basic knowledge of agricultural biotechnology together with specialized knowledge and skills.

Research Center for Korean Studies

The Research Center for Korean Studies was established in 2000 with funding from the South Korean government and is the first of its kind in Japan. It drives general and challenging research related to the Korean

Peninsula, coordinates joint studies with researchers inside and outside Japan and otherwise conducts various activities centering on research in Korean Studies.

Worldwide Consortium of Korean Studies

This Consortium was founded on a proposal by Kyushu University. It consists of 12 universities from 7 countries. Participating universities include Harvard University and the University of California, Los Angeles. The Consortium, through the bilateral research, aims to tackle problems facing the global community. It holds a workshop annually as a part of their activities.

Participants of the workshops include over 300 next-generation researchers of Korean Studies who were taught by world-renowned specialists.

College of Asia Pacific (CAP)

This program is administered by Pusan National University, Yonsei University, Korea University, Kagoshima University, Seinan Gakuin University and University of Hawaii. English is used as the common language. In the first year of this program, six universities in Japan and Korea share the campuses using English as a common language. In the second year, students selected from those who completed the first year program participate in the trilateral program of Japan, Korea and the U.S. held at the University of Hawaii at Manoa. The program aims to develop the next generation of leaders with a "glocal" perspective.

(Co-organized by Center for Asia-Pacific Future Studies)



European Union Institute in Japan, Kyushu (EUIJ-Kyushu)

Commissioned by European Union (EU) headquarters, the institute was established in 2011 as a consortium made up of Kyushu University, Seinan Gakuin University and Fukuoka Women's University. As the

academic center for the EU in Japan, the institute conducts activities to facilitate understanding and a deeper knowledge of the EU in terms of politics and economics, science and technology, and culture.

Main Activities

Education

Provide opportunities for the systematic study of the EU through EU Studies Diploma Programs (EU-DPs)

Research

Conduct research seminars, academic symposia and lectures in connection with the EU and its member nations

Scholarships and Research Funds

Support for studying abroad in EU member nations, support for young researchers and other forms of support, such as research grants for researchers participating in EU-DPs

Outreach

Organize lectures and forums which are open to the general public

Communications

Provision of information on EU research, the EU and the activities of EUIJ Kyushu through e-journals and newsletters

Partnerships with Other Institutions

Develop collaborative activities between EUIJs in Japan and EU Centers around the world



Center for Asia-Pacific Future Studies

The center was established in 2014 in order to promote global development based on the achievements of the University's Asia-focused strategy. Its goals are to pioneer a unique new academic discipline that will serve as a common foundation for harmonious coexistence in the Asia-Pacific region and to propose new social agendas and serve as a driving force in raising the global reputation of the University's humanities and social science departments.

Contribution to research

- Creation of virtuous cycle to secure superior foreign researchers for the next generation.
- Enhancing the voice of the field of Humanities and Social Sciences:
Building a gateway to deliver a message to the world through English.

Contribution to education

- Cooperation with a general education curriculum.
- Providing world-class lectures by field experts.



International Cooperation in Asia and Elsewhere Utilizing the University's Experience and Knowledge

Kyushu University has exchanged a memorandum of agreement with the Japan International Cooperation Agency (JICA) with the goal of conducting international cooperation projects in developing nations and developing human resources for this field. Based on the agreement, the university will utilize the JICA's practical experience in developing countries in education and research, and the JICA will make use of the university's accumulated experience in overseas education and research.

■ Egypt-Japan University of Science and Technology (E-JUST)

E-JUST is a new college that was established in Egypt through a joint initiative by the Japanese and Egyptian governments. With the focus on graduate school and research, E-JUST aims to provide practical, international-standard education in small classes. Kyushu University is one of the institutions involved in coordinating the 12 Japanese universities that support this project, which provides training for the next generation of educators, researchers and technical professionals and is contributing to industrial and economic development in the Middle East and Africa.



■ Malaysia-Japan International Institute of Technology (MJIT)

Under the University of Technology, Malaysia, MJIT was established through the joint efforts of the Japanese and Malaysian governments to conduct education and research, utilizing the characteristics of engineering education in Japan. Kyushu University participates in a consortium made up of 25 Japanese universities, and it provides support as a member institution in the mechanical precision engineering major and environment and green technologies engineering major.



■ AUN/SEED-Net (ASEAN Engineering-Related Higher Education Network)

AUN/SEED-Net is a higher education network formed by universities in the ASEAN region as well as Japan that are cooperating in the sustainable development of engineering professionals needed for social and economic development in that region. Fourteen universities in Japan, including Kyushu University, and 26 from 10 ASEAN countries participate in the network.

■ International Cooperation Projects

Kyushu University participates in a range of international cooperation projects, including the JICA's international student program, which accepts international students from developing countries, such as Afghanistan and Myanmar. Kyushu University is also involved in a technical cooperation program, which deals with highly tailored activities at the grassroots level to improve living conditions and livelihoods in developing countries.

Developing and Enhancing Systems for Accepting Students and Researchers from Overseas

International Student and Researcher Support Centers

The seven centers are located on each campus, and the 16 staff members provide support for the studies and lifestyle needs of overseas students and researchers in Japan. The centers are engaged in further developing systems for accepting international students and researchers. They also build up local alliances with Fukuoka Prefecture and the cities of Fukuoka and Itoshima to enhance support systems for international students.

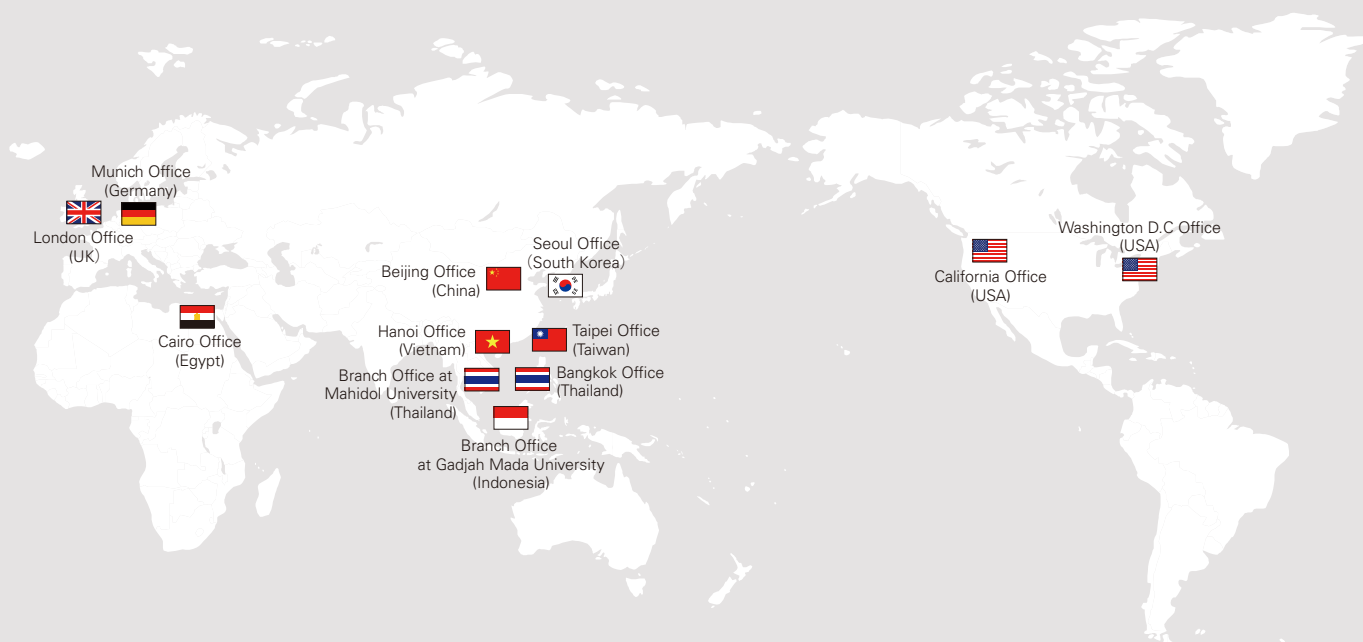
Support Offered

- Procedures for applying for the Certificate of Eligibility (CoE) to obtain a visa
- Support for traveling from Fukuoka Airport and other points to the dorms or university when arriving in Japan
- Information on searching for an off-campus apartment and help with moving
- Help with various procedures related to living in Japan
- Help with translating university documents into English
- Interpretation at service windows and counters
- Alliances and cooperation with international student support teams
- Other information for international students and researchers related to living in Japan



Overseas Offices

Overseas offices have been opened around the world to help recruit promising students from overseas, communication and the collecting of local academic information.



Kyushu University Hospital: Leading Japanese Medicine, Transmitting It to the World



Kyushu University Hospital is involved in various initiatives to fulfill the three main roles of such an institution—medical care, education and research. With its focus on cutting-edge medicine and internationalization, the hospital leads the nation. In terms of medical care, the hospital is enhancing cancer treatment, actively conducting initiatives in pioneering medical fields, such as living-donor kidney transplants and liver transplants. The hospital has opened the Pediatric Emergency & Critical Care Center, which is the first of its kind at a university hospital, and it continues to provide quality, advanced medicine while reinforcing hospital-hospital and hospital-clinic partnerships as the core medical

institution in the region. In addition, Kyushu University Hospital is enhancing graduate and postgraduate studies, and it is conducting a project to promote team medicine in cancer, organ transplantation, the treatment of intractable diseases and other areas. In research, the hospital is working to bring about next-generation medicine by identifying seeds, promoting clinical trials and clinical research, and further developing systems for commercialization. The International Medical Relations Office, which is a key feature of the hospital, plays a leading role in internationalization, serving as the administrative office for the National University Hospital Medical Cooperation Network.



Outpatient Lobby



A bright and spacious lobby for general reception in the outpatient care building



Pediatric dentistry designed to be child-friendly

■ Cancer Center Serves as Designated Regional Cancer Center

Cancer Center

The Kyushu University Cancer Center was authorized in 2008 as a Designated Regional Cancer Center for Fukuoka Prefecture. To further enhance cancer treatment and care, the center established an outpatient chemotherapy clinic, cancer consultation and support office, a palliative care team and a hospital cancer registration office. Through the Cancer Care Committee, cancer conferences and seminars held by the Fukuoka Prefecture Cancer Care Alliance, the university is promoting the prefectural government's efforts to universalize cancer treatment in the prefecture to ensure that patients receive standard, specialized treatment regardless where they live.



Cancer vaccine development

Designated Pediatric Cancer Center

Kyushu University Hospital is equipped to treat conditions affecting all organs in children, including solid and hematologic cancer. The hospital has also enhanced its patient-support services, which include classes, palliative care and the availability of clinical psychologists and licensed child-care specialists in pediatric cancer. In light of these resources, the hospital was authorized in 2013 as a Designated Pediatric Cancer Center—the only such center in the Kyushu-Okinawa region. To further promote the development of new treatments and services, the hospital intends to set up networks with partner hospitals, conduct related training, and centralize information on intractable and recurrent cases.



Endoscopic surgical procedure for colon cancer

■ Working for the Next Generation of Medicine

Telemedicine Development Center of Asia (TEMDEC)

Using new online technology for academic applications, TEMDEC conducts remote medical education with major hospitals around the world. Videos of advanced surgical procedures in Japan, images of endoscopic tests and other kinds of information are shared among institutions throughout Asia. The center intends to partner with the International Medical Relations Office and assist in overseas medical consultations and patient transfers.

Health Networking Center

The Health Networking Center establishes links between the hospital and regional clinics to help ensure that patients receive appropriate local medical care. The center aims to achieve seamless continuity between the advanced care provided at the hospital and the care received locally. In addition, the center forms alliances with medical institutions overseas so that medical support can be provided in Japan to patients from other countries and to Japanese patients needing care while abroad.

Center for Clinical and Translational Research (CCTR)

The CCTR works with a wide variety of specialists in a broad range of fields in an effort to develop medical care for the future. It provides expert advice and administrative support for the cutting-edge medical field of translational research, which includes gene therapy, cellular therapy and robot-assisted surgery, as well as for clinical trials of new drugs and for clinical research. Over 100 specialists in medicine, dentistry, nursing and biostatistics participate in the CCTR to help ensure that research is properly planned.

■ Emergency Medicine and Critical Care

Emergency & Critical Care Center

Specialist physicians in each department provide critical care for patients on a 24-hour basis. Along with comprehensive critical care, the center is particularly focused on acute heart attacks, strokes and other cardiovascular diseases, severe trauma and pediatric emergency medicine. The center quickly and accurately determines the emergency level and degree of severity, and it works to provide medical care that utilizes a patient's innate healing capacity through the timely use of advanced tools, including artificial respiration management, extracorporeal support and blood purification therapy. The Pediatric Emergency & Critical Care Center was established in 2013. As a university hospital, the hospital teaches medical students, but it also provides training for postgraduate physicians and conducts drills for emergency medical technicians.



Intensive care unit



Heliport for patients transported from all over Kyushu

■ Providing Cutting-edge medical technologies

Robot-assisted surgical procedure

Robot-assisted surgical procedures using the da Vinci Surgical System involve surgical instruments being inserted into the patient's body while the physician monitors the procedure with 3-D images. The advantages are reduced postoperative pain and faster recovery. Kyushu University Hospital has led the nation in the use of this form of surgery, and in 2009 it was certified as an institution capable of performing robot-assisted endoscopic surgery for radical prostatectomy procedures. And also, introducing a PET/MRI device, we conduct clinical researches with international standard in Molecule Imaging Center which opened in 2013.



Endoscopic robot-assisted surgery using the da Vinci system



PET/MRI device in Molecule Imaging Center

Kyushu University Library: Learning, Teaching, and Research Hub



In line with the university's mission of providing a learning environment in which research and education can advance freely and dynamically, Kyushu University Library is dedicated to facilitating learning, teaching, and research.

■ Providing an Environment for Active Learning

The library provides a diverse set of study spaces for different objectives and learning formats. It holds a variety of lectures and offers a full range of assistance in the form of study consultations provided by graduate students serving as library learning assistants—all in support of the work

of active learning by students. And with the number of international students growing year by year, the library also provides an array of services for these individuals, from guidance for new students and lectures in English to ample Japanese-language learning materials.



■ Ample Content and Collections Broad Communication of Scholarly Information

Since its founding the library has amassed one of the best collections in Japan—over four million volumes and over 70,000 titles of electronic journals, electronic books and other media—to provide solid support for learning, teaching, and research. The library also broadly communicates scholarly information produced and accumulated by the university in such forms as university research results and rare collections, and this helps stimulate academic research, education and industry in the region.



■ Always at the Fore: a Leader in Library Science

The library constantly seeks to enhance its functions by introducing new library technologies, for example, developing new, more user-friendly search systems.

- Developed and instituted tools for integrated access to diverse library resources
- Cutting-Edge R&D at the Library Research and Development Division
- Instituted radio-frequency identification tags's and automated stacks
- Developed catalog card image search system



Automated stacks at Ito Library

■ Creating, Supporting and Publishing Quality Educational Resources

The Innovation Center for Educational Resource (ICER) provides educational materials that actively utilize information and communications technology. The center develops course videos and digital resources that use 3-D computer graphics. The digital materials available on YouTube, iTunes U, OpenCourseWare and elsewhere to broadly provide learning opportunities

to the general public as well as to students. The ICER also produces English resources for classes in that language, which are being promoted as part of the administration's efforts to internationalize education at the university.

■ New Central Library (Central Library for Internationalization) for Kyushu University's Next 100 Years

The university's new Library project is currently under way based on the following concepts—encourage, link, create and cultivate. The new Library will be located adjacent to Shiiki Auditorium and connected to the Arts and Science Building by a bridge. It will feature a distinctive design with the rooftop functioning as a liberal arts campus, and it will provide a variety of study spaces and ample materials to serve as a center for active learning, academic research and internationalization.



Academic Calendar 2014

4	<p>Tues., Apr. 1 Spring term commences *Tues., Apr. 1 Spring break (to Apr.10) Wed., Apr. 2 Student health exams (to Apr. 23) Mon., Apr. 7 Matriculation ceremony Mon., Apr. 7 New student orientation (to Apr. 10) *Tues., Apr.8 Graduate school matriculation ceremony *Fri., Apr. 11 Spring term classes begin</p>	 <p>Matriculation ceremony</p>
5	<p>Sun., May 11 Anniversary of the university's founding Sun., May 18 Ito Festival</p> <p>MAY</p>	 <p>Ito Festival</p>
6	<p>JUNE</p>	
7	<p>JULY</p> <p>Spring term exam</p>	
8	<p>*Fri., Aug. 1 Summer break (to Sept. 30) Sat., Aug. 2 Campus Open Day (to Aug. 4)</p> <p>AUGUST</p>	
9	<p>Thurs., Sept.25 Fall term Commencement Ceremony Tues., Sept. 30 Spring term ends</p> <p>SEPTEMBER</p>	 <p>Open campus</p>
10	<p>Wed., Oct. 1 Fall term commences Thurs.,Oct.2 Fall term matriculation ceremony *Wed., Oct. 1 Fall term classes begin Sat., Oct. 11 Sports meet</p> <p>OCTOBER</p>	 <p>Kyushu University Festival</p>
11	<p>Fri., Nov. 21 Kyushu University Festival (to Nov. 24)</p> <p>NOVEMBER</p>	 <p>Kyushu University Festival</p>
12	<p>*Fri., Dec. 26 Winter break (to Jan. 7)</p> <p>DECEMBER</p>	
1	<p>Sat., Jan. 17 National Center for University Entrance Examinations (to Jan. 18)</p> <p>JANUARY</p>	
2	<p>Wed., Feb. 25 General entrance exam (prior period schedule) (to Feb. 26) Fall term exam</p> <p>FEBRUARY</p>	
3	<p>Thurs., Mar. 12 General entrance exam (latter period schedule) Wed., Mar. 25 Commencement ceremony Tue., Mar. 31 Fall term ends</p> <p>MARCH</p>	 <p>Commencement ceremony</p>

*basic date: the actual date depends on the particular institute and faculty

Student Perspectives: Why Kyushu University?



Broad scope of study was a major appeal

A major feature with the School of Letters at Kyushu University is that it allows students to study a broad range of fields, such as sociology, that other universities would deal with in separate schools. That really appealed to me, and so I chose to enroll. Other big advantages were the close proximity of students to professors and the depth of connection with the local community. I'm currently graduate student, conducting sociological research that analyzes the impact of background and life course on purchasing behavior. I decided on this area of research after considering how I might make a contribution to addressing the difficult situation currently faced by Japanese manufacturing. In the future, I hope to use analytical methods about buying behavior and apply the findings toward helping boost sales and reinvigorate manufacturing.

Ayaka Kawano Master's degree student
Graduate School of Human-Environment Studies

Door Always Open for People Willing to Learn

I really like insects. And so since Kyushu University is one of the premier universities for insect research, going there had been a dream of mine since I was a kid. When I was in my second year of high school, I took part in a program for high school students called the Kyushu University Excellent Student in Science Development Project, which was run by the School of Sciences at Kyushu University. That was the major reason I chose Kyushu University. I felt strongly drawn to doing research once I actually started studying at the Hakozaki Campus. In the future, I want to be a biologist. I'm learning how to formulate theories as well as about the basic way of thinking and methodologies in research. I'm also discovering the importance of always questioning whether something—no matter what—is correct. What helps you learn and make progress here is not just the professors but also everyone in your club or research office—your seniors, friends and juniors—as well as the actual environment itself, being in Fukuoka, Kyushu and Asia. The door to Kyushu University is always open to people with a willingness to learn.

Shotaro Kakizoe Undergraduate student
School of Sciences



Meaningful Time, Leading to the World

I found out about the international study programs at Kyushu University through a promotional event held at my high school by the university, and enrolled. Japan is one of the leading countries in science and is a country that really satisfies my curiosity. The wide range of available studies in the International Program and wonderful scholarship opportunities were also very appealing. And I am currently studying in the Laboratory of Marine Resource Chemistry. The university is the perfect environment for dedicating oneself to research, and I'm able to freely expand the discipline I am interested in. The International Program at Kyushu University is diverse. The professors are leaders in their respective fields and have many close ties with companies and researchers throughout the world. For someone who wants to perform on the international stage, I think this is extremely beneficial.

Adiguna Bahari Undergraduate student
School of Agriculture



Student Life and Career Support

Dormitories



There are five student dorms: Dormitory I, mainly for non-freshman students and graduate students on the Ito Campus; Dormitory II, mainly for students taking basic learning on the Ito Campus; the Matsubara Dormitory for male students; the Kaizuka Dormitory for female students; and the Ijiri Dormitory for male students in the School of Design. A new dorm for both Japanese and international students, Dormitory III and Ito Harmony House were completed in Aug 2014.

New Dormitories for Future Global Leaders

We open two dorms, Dormitory III and Ito Harmony House. Dormitory III which is type of room share by four students was completed, as well as Ito Harmony House where approximately 580 students can live and exchange their own cultures. When Japanese and international students interact, cultural exchange takes place, a richer level of human exchange is developed, and foreign-language communication skills are improved. Kyushu University offers a place for students of diverse nationalities to live together. It provides an environment for constant self-improvement, and it helps promote globally oriented individuals who are capable of performing on the international stage.



Financial Aid

Kyushu University provides various financial support options to help students concentrate on their studies and to foster global leaders.

- Remission of Matriculation Fee
- Deferment of Matriculation Fee
- Remission of Tuition
- Yamakawa Prize and Grant
(named after the first President of the University, Kenjiro Yamakawa)
【Kyushu University Fund】
- Research grant for doctoral students
【Kyushu University Fund】
- Grant for students' unique studies and social activities
【Kyushu University Fund】
- Grant for students' participation in international conferences
【Kyushu University Fund】
- Grant for research activities
【Kyushu University Student Support Association】
- Scholarships
Kyushu University offers its own scholarships along with those provided by JASSO, and other public and private foundations.
- Financial aid for study abroad
Kyushu University strongly supports the students who wish to study abroad by offering various support options provided by the University and other foundations.

*Since each financial aid has different requirements and limited numbers, not all students are qualified to win scholarships. Please see the website for further information.

Job and Career Support

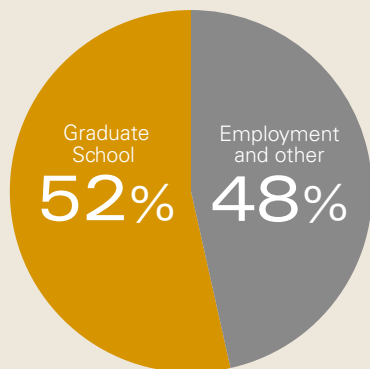
Kyushu University provides a variety of programs to help students find jobs. Students can also make use of job counseling provided by experienced counselors.

STEP 1	<p>Career Guidance</p> <ul style="list-style-type: none"> Lowerclassmen (first- and second-year undergraduate students) are eligible for support and guidance to help them develop the ability to choose their own career path and the right approach to looking for a job.
STEP 2	<p>Self-Development Program</p> <ul style="list-style-type: none"> Program provided to help students improve their English-language ability, such as with TOEIC programs
STEP 3	<p>Internships</p> <ul style="list-style-type: none"> Internships involve students working at companies and other organizations where they might like to be employed <p>Guidance Programs</p> <ul style="list-style-type: none"> These include job-hunting guidance for upperclassmen, job seminars that simulate interviews, on-campus company presentations and job fairs (including job interviews').

Career Paths and Employment

Among 2013 graduates, 52% went on to graduate school, and 48% sought employment or took certification tests.

Graduate School and Employment



Main Employers

Private Sector

- Fukuoka Bank ■ Bank of Tokyo-Mitsubishi UFJ
- Tokio Marine & Nichido Fire Insurance ■ Toyota Motor Corp.
- Mitsubishi Electric ■ Sampo Japan Nipponkoa Holdings
- Meiji Yasuda Life Insurance Company ■ OBIC Group
- Nishi-Nippon City Bank ■ Nitori ■ Sumitomo Mitsui Banking Corp.
- FCO・OP ■ NTT Data ■ JR Kyushu ■ The Shoko Chukin Bank
- Oita Bank ■ Japan Tobacco ■ The Norinchukin Bank ■ Fujitsu
- Nomura Securities and others

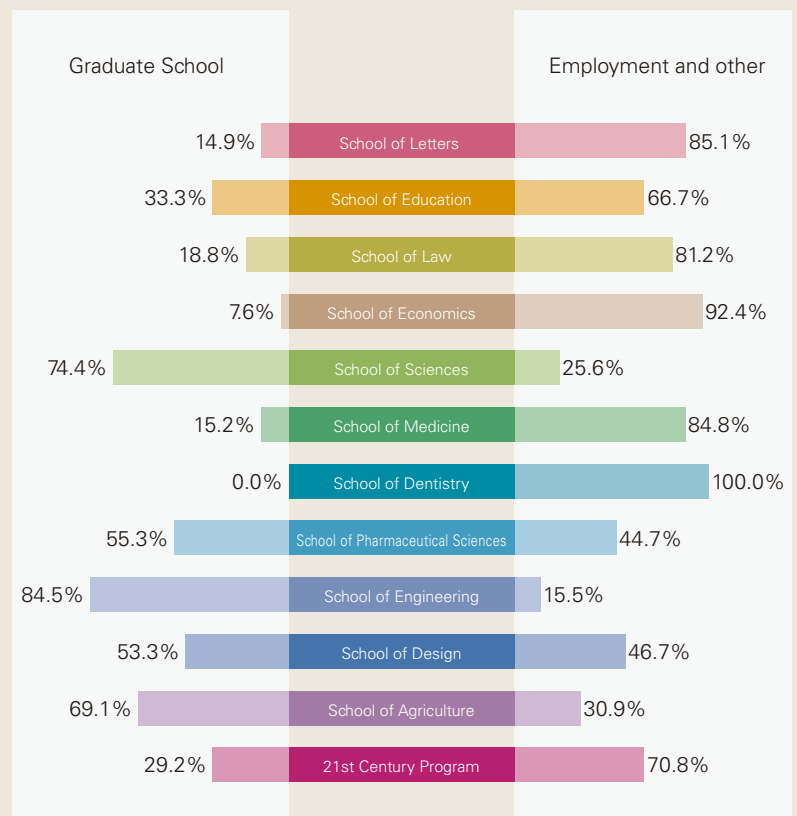
Public Sector

- Fukuoka Prefecture ■ Fukuoka City
- Central government ministries and agencies ■ Courts and others

Schools and Hospitals

- Kyushu University (including the hospital)
- Public and private high schools
- Saga University Hospital
- Fukuoka Tokushukai Hospital and others

Students Going on to Graduate School and Employment by School



Science and Research Park Core Ito Campus

Having celebrated the centenary of its founding in 2011, Kyushu University is building on the foundations laid via the countless achievements of previous generations and is developing its Ito Campus to create a platform on which it can build the next century of success.

Our goal is to ensure that Kyushu University can continue to develop as a university that flourishes along with the local citizens, as an institution in which the community can take great pride, and as a key global university with a focus on Asia. As such, development of the Ito Campus is progressing steadily, creating the core of a city that can serve as a hub for academic research based on partnerships between industry, academia, and government, while coexisting with the rich natural environment of the Itoshima Peninsula.



Three Concepts for a 21st-century Campus

Next-Generation Technologies	Urban Campus Open to Public	Oasis of Nature and History
Digital TV broadcasting trials Hydrogen campus concept IC card trials	Science and research park concept Open library, welfare facilities, etc. Ito Festival, artwork	Maintaining biodiversity Research and preservation of artifacts

Relocation Schedule and Progress

Stage I (FY2005-07)	Stage II (FY2008-11)	Stage III (FY2012-18)
Total number of people: approx. 5,200 (4,200 students, 1,000 staff members) [Number of people relocated: approx. 5,200]	Total number of people: approx. 10,800 (9,500 students, 1,300 staff members) [Number of people relocated: approx. 5,600]	Total number of people: approx. 18,700 (15,500 students, 3,200 staff members) [Number of people relocated: approx. 7,900]
Engineering Science and Technology Library I Completed relocation from Hakozaki (to FY2006) End of Stage I	Faculty of Arts and Science Graduate School of Social and Cultural Studies Faculty of Languages and Cultures Faculty of Mathematics Department of Mathematics of the Faculty of Science Institute of Mathematics for Industry Science and Technology Library II Completed relocation from Ropponmatsu (to Oct. 2009) End of Stage II	International Institute for Carbon-Neutral Energy Research Next-Generation Fuel Cell Research Center SHIKI HALL / Faculty of Arts and Science (FY2014) Ito Harmony House, Dormitory III (FY2014) International Institute for Carbon-Neutral Energy Research Building No. 2 (FY2014) Coevolution Social System Innovation Center (FY2014) / Science (FY2015) Research Institute for Information Technology (FY2016) University Internationalization Related Facilities International Center Library (FY2017) Graduate School of Integrated Sciences for Global Society (FY2017, FY2018) Language and Culture Studies / International Student Center, etc. International Facilities (FY2017, FY2018) Agriculture, International Agriculture (FY2018) Humanities & Social Sciences Facilities Faculty of Humanities, Faculty of Law, Faculty of Economics (FY2017, FY2018) Other (FY2018)
<div style="display: flex; align-items: center; justify-content: center;"> <div style="border: 1px solid black; padding: 5px; margin-right: 10px;">[Reacquire Land] Completed in FY2012</div> <div style="font-size: 2em;">➔</div> </div>		
*The figures in parentheses indicate the fiscal year when relocation is planned.		

Public Space Design for Culture



Center Zone Campus Mall equipped with ample lighting

Artwork is installed in public spaces under the direction of the Kyushu University New Campus Planning Committee's Artwork Evaluation & Selection Working Group.



Foucault's pendulum



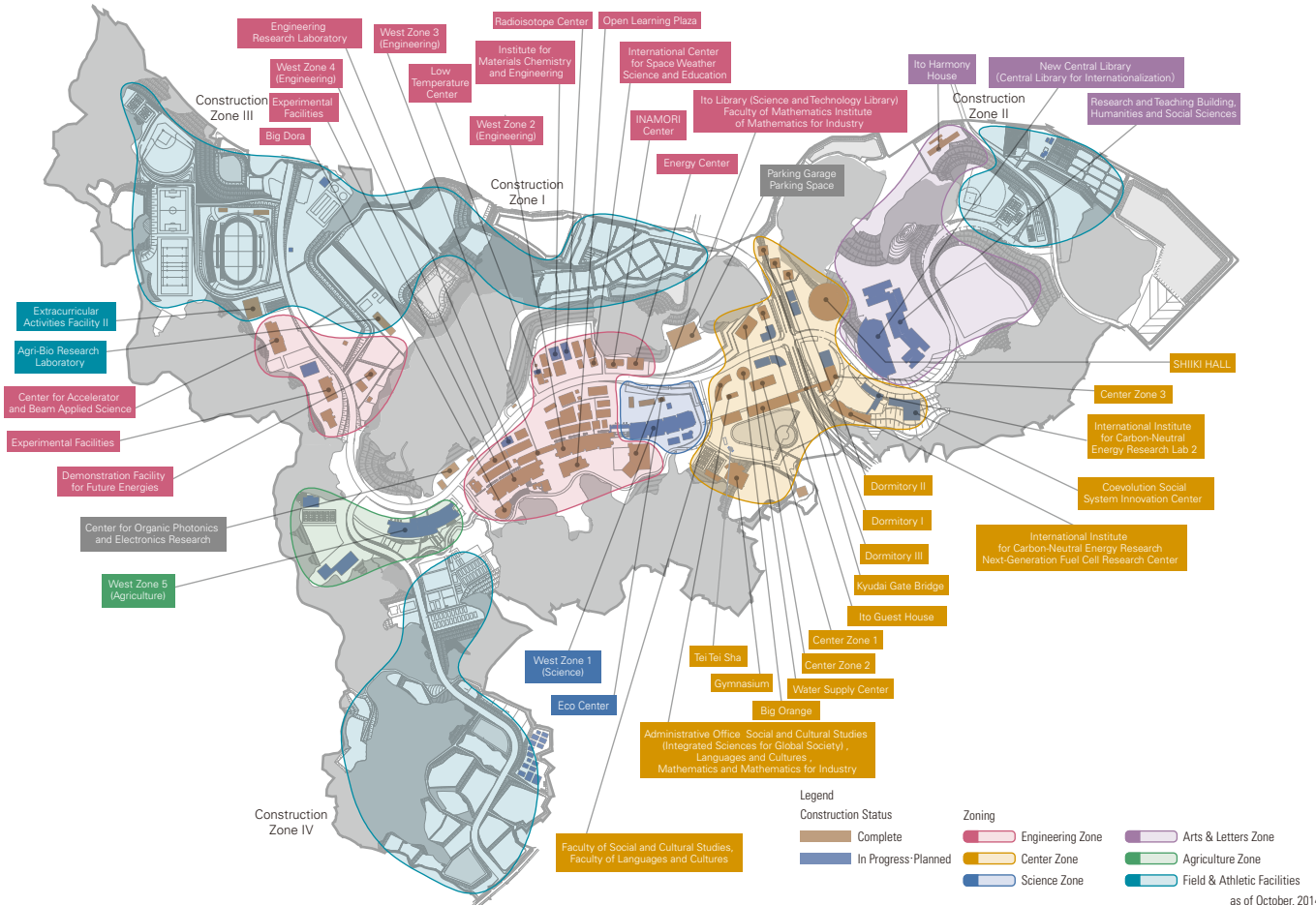
Green House

Center for Culture, Science and the Arts SHIIKI HALL

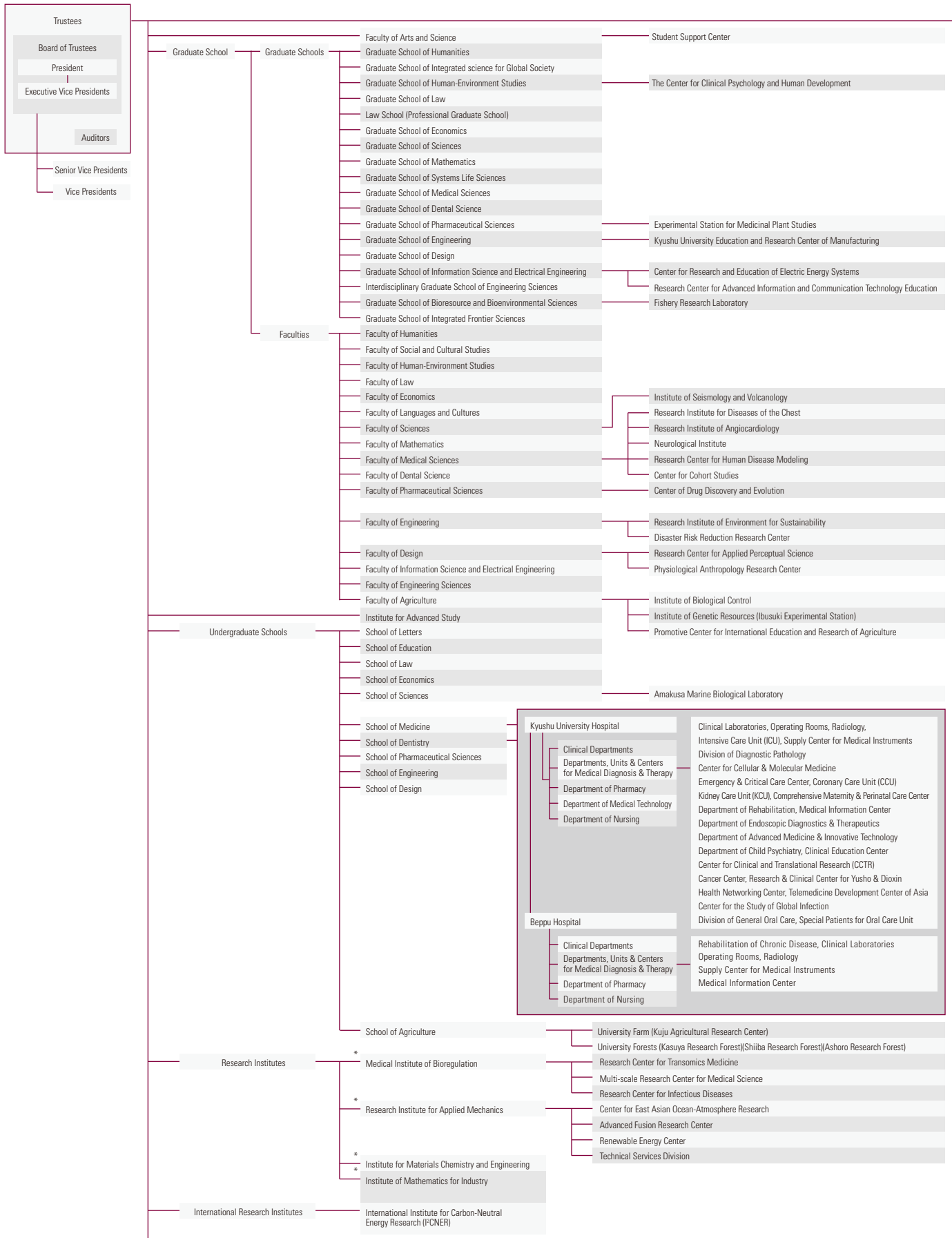
SHIIKI HALL is a circular hall with four floors above ground, and it can seat 3,000 people. A donation from Masakazu Shiiki, chairman of the Shiiki Foundation for the Promotion of Education and Culture, covered the cost of the Hall's construction. Part of the building can be used as space for classes. With its permanent gallery and restaurant, the hall is popular with the general public, and it is used for meetings, lectures and other events.

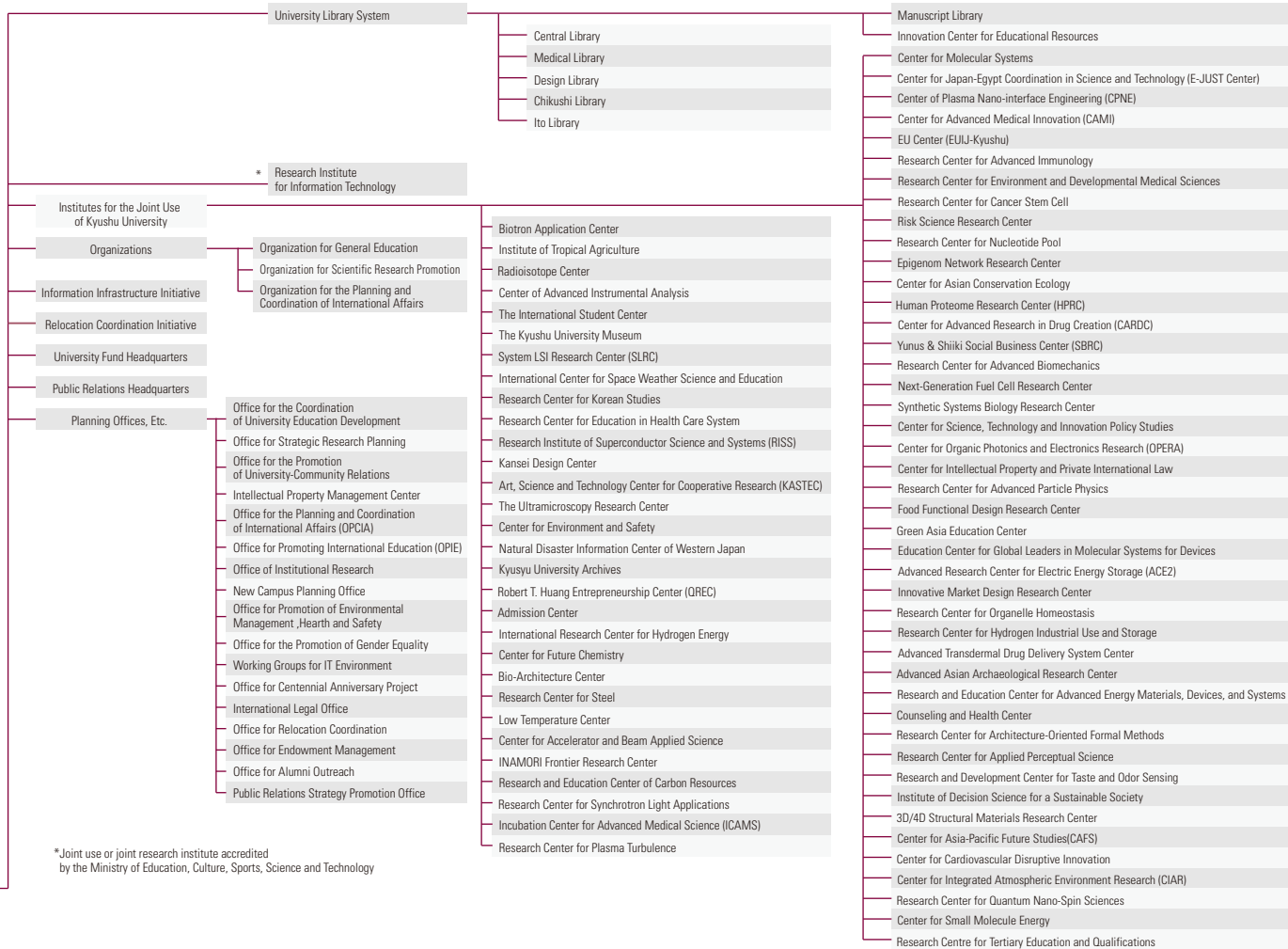
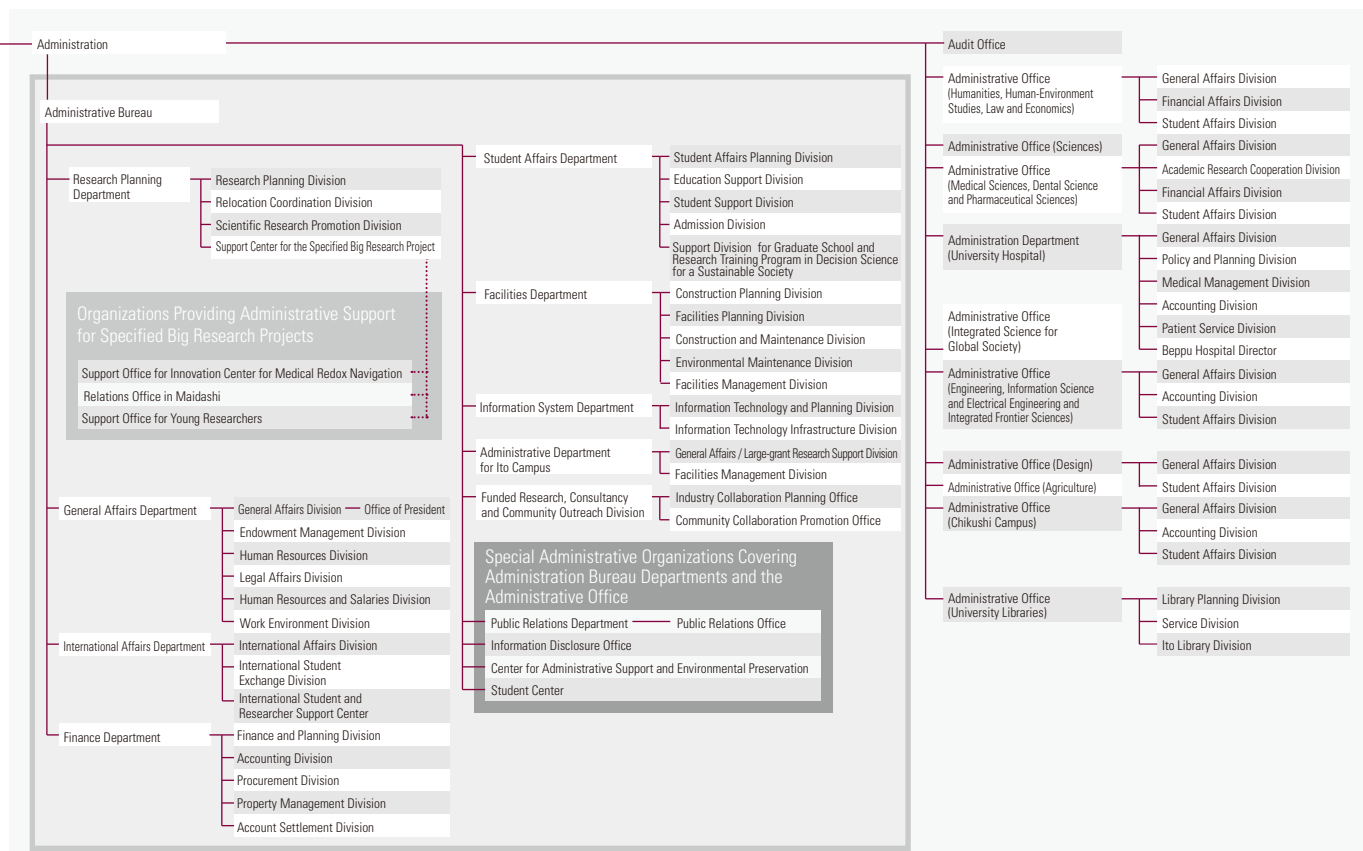


Ito Campus Plan Map



University Organization





Kyushu University by The Numbers

University Staff

Classification		Number
Faculty	Professors	699
	Associate Professors	617
	Lecturers	115
	Assistant Professors	658
	Research Associates	17
Subtotal		2,106

Classification		Number
Trustees		11
Administration	Administrative Staff	844
	Medical Staff	867
	Other Technical Staff	288
Subtotal		1,999

Classification		Number
Fixed-Term Faculty Members		344
Specially Appointed Professors		2
Research Fellows		1,130
Visiting Lecturers		8
Fixed-Term Administrative/Technical Staff		834
Administrative /Technical Assistants, etc.		1,513
Subtotal		3,831

Total University Staff (as of May 1, 2014)

Total **7,936**

*Includes 216 non-Japanese staff members
*Excludes the number of trustees

Student Enrollment Information

Undergraduate Students

School	Enrolled		
Letters	719	(445)	(62%)
Education	220	(140)	(64%)
Law	872	(315)	(36%)
Economics	1,109	(238)	(21%)
Sciences	1,292	(251)	(19%)
Medicine	1,316	(557)	(42%)
Dentistry	331	(136)	(41%)
Pharmaceutical Sciences	407	(165)	(41%)
Engineering	3,676	(313)	(9%)
Design	913	(341)	(37%)
Agriculture	1,004	(443)	(44%)
Total	11,859	(3,344)	(28%)

Undergraduate Students who are taking 21st Century Program

21st Century Program	119	(82)	(69%)
----------------------	-----	------	-------

Graduate Students

Graduate School	Master's Degree Program			Professional Graduate School			Doctoral Degree Program			Total		
Humanities	83	(47)	(57%)				104	(53)	(51%)	187	(100)	(53%)
Integrated Sciences for Global Society	63	(52)	(83%)				40	(17)	(43%)	103	(69)	(67%)
Social and Cultural Studies	63	(40)	(63%)				116	(63)	(54%)	179	(103)	(58%)
Human-Environment Studies	233	(97)	(42%)	47	(43)	(91%)	144	(67)	(47%)	424	(207)	(49%)
Law	92	(32)	(35%)				26	(10)	(38%)	118	(42)	(36%)
Law School (Professional Graduate School)				136	(38)	(28%)				136	(38)	(28%)
Economics	86	(41)	(48%)	88	(14)	(16%)	61	(14)	(23%)	235	(69)	(29%)
Sciences	288	(55)	(19%)				90	(16)	(18%)	378	(71)	(19%)
Mathematics	107	(10)	(9%)				61	(8)	(13%)	168	(18)	(11%)
Systems Life Sciences							269	(96)	(36%)	269	(96)	(36%)
Medical Sciences	104	(40)	(38%)	46	(27)	(59%)	607	(181)	(30%)	757	(248)	(33%)
Dental Science							165	(73)	(44%)	165	(73)	(44%)
Pharmaceutical Sciences	98	(43)	(44%)				94	(25)	(27%)	192	(68)	(35%)
Engineering	940	(80)	(9%)				402	(59)	(15%)	1,342	(139)	(10%)
Design	310	(106)	(34%)				115	(49)	(43%)	425	(155)	(36%)
Information Science and Electrical Engineering	362	(31)	(9%)				122	(14)	(11%)	484	(45)	(9%)
Engineering Sciences	461	(41)	(9%)				128	(15)	(12%)	589	(56)	(10%)
Bioresources and Bioenvironmental Sciences	455	(185)	(41%)				178	(60)	(34%)	633	(245)	(39%)
Integrated Frontier Sciences	167	(71)	(43%)				36	(13)	(36%)	203	(84)	(41%)
Total	3,912	(971)	(25%)	317	(122)	(38%)	2,758	(833)	(30%)	6,987	(1,926)	(28%)

Total Student Enrollment (Undergraduate & Graduate) (as of May 1, 2014)

18,846 Undergraduate: 11,859
Graduate: 6,987

*Figures in parentheses are the number of women students and their proportion of the total

World University Rankings

(only Japanese universities shown)

Japan Rank	World Rank	University	Score
1	31	University of Tokyo	86.7
2	36	Kyoto University	84.7
3	55	Osaka University	79.6
4	68	Tokyo Institute of Technology	76.3
5	71	Tohoku University	75.3
6	103	Nagoya University	69.4
7	126	Kyushu University	64.4
8	135	Hokkaido University	63.4
9	197	Keio University	54.4
10	198	University of Tsukuba	54.3

Source: QS World University Rankings 2014-2015

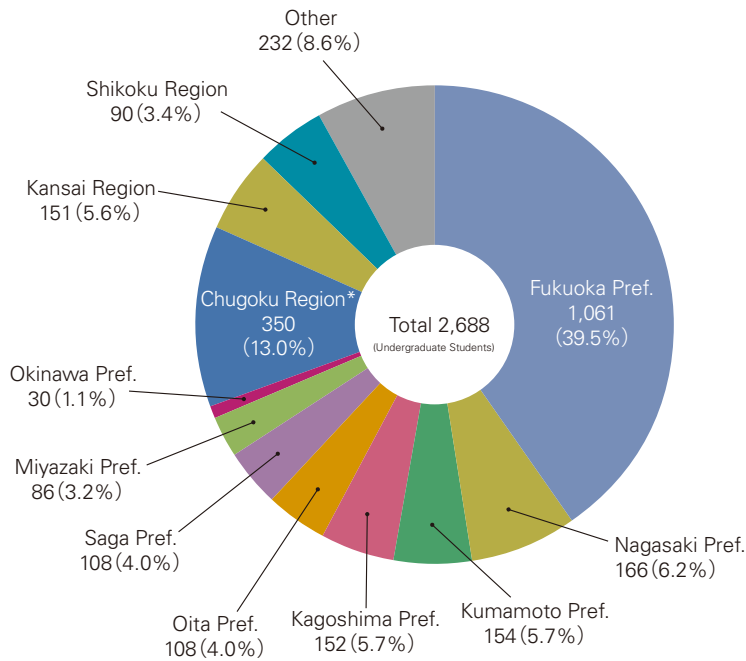
Citation Performance

Japan Rank	World Rank	Institution	Citations	Papers	Average No. Citations Per Paper
1	17	University of Tokyo	1,190,750	78,420	15.18
2	35	Kyoto University	829,201	57,581	14.4
3	47	Osaka University	685,095	47,523	14.42
4	59	Japan Science and Technology Agency	601,105	28,424	21.15
5	77	Tohoku University	543,629	46,469	11.7
6	114	RIKEN	423,587	21,767	19.46
7	133	Nagoya University	388,409	30,071	12.92
8	146	Kyushu University	359,697	31,530	11.41
9	150	AIST	347,738	27,699	12.55
10	162	Hokkaido University	333,882	30,833	10.83

Thomson-Reuters Press Release, April 16, 2013 Period: January 1, 2002 to December 31, 2012 (11 years)

Undergraduate Student Enrollment by Region

(as of April 1, 2014)



*Chugoku Region: Hiroshima, Okayama, Shimane, Tottori and Yamaguchi prefectures

Total Graduates

Undergraduate

Total	140,099
-------	---------

Graduate School

Master's Degree Programs	49,915
Professional Degree Programs	1,580
Doctoral Degree Programs	18,682
Doctoral Degree (by Dissertation)	8,563
Total	78,740

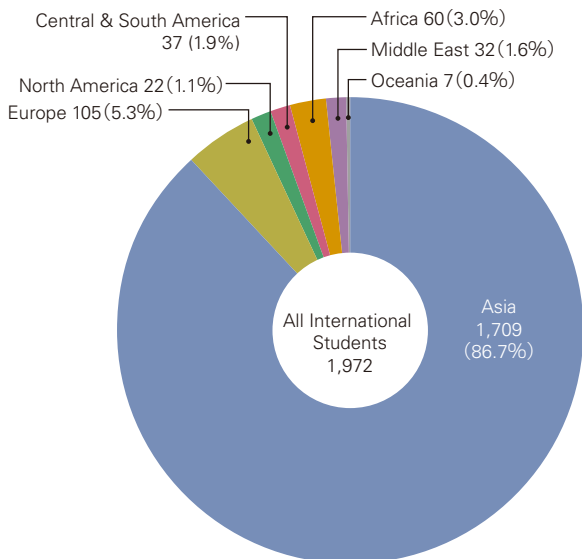
Total Graduates

(as of April 1, 2014)

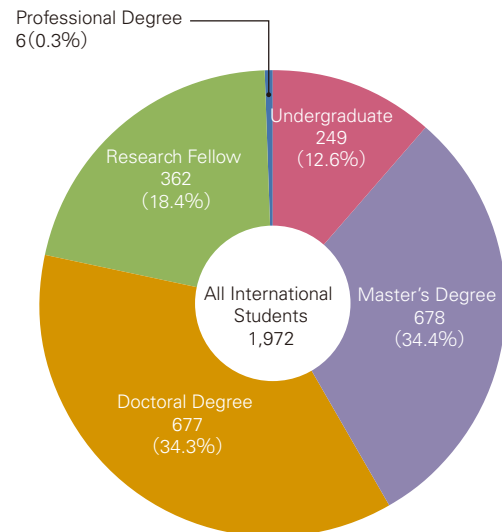
Total **218,839**

International Students

International Students by Region



International Students by Degree Program



International Student Country Ranking

Rank	Country	No. of Students	Proportion of Total
1	China	1,051	53.3%
2	South Korea	238	12.1%
3	Indonesia	108	5.5%
4	Malaysia	68	3.4%
5	Vietnam	48	2.4%
6	Thailand	36	1.8%

Rank	Country	No. of Students	Proportion of Total
7	Egypt	34	1.7%
8	Taiwan	31	1.6%
9	France	28	1.4%
10	Bangladesh	25	1.3%

Total International Students

(as of May 1, 2014)

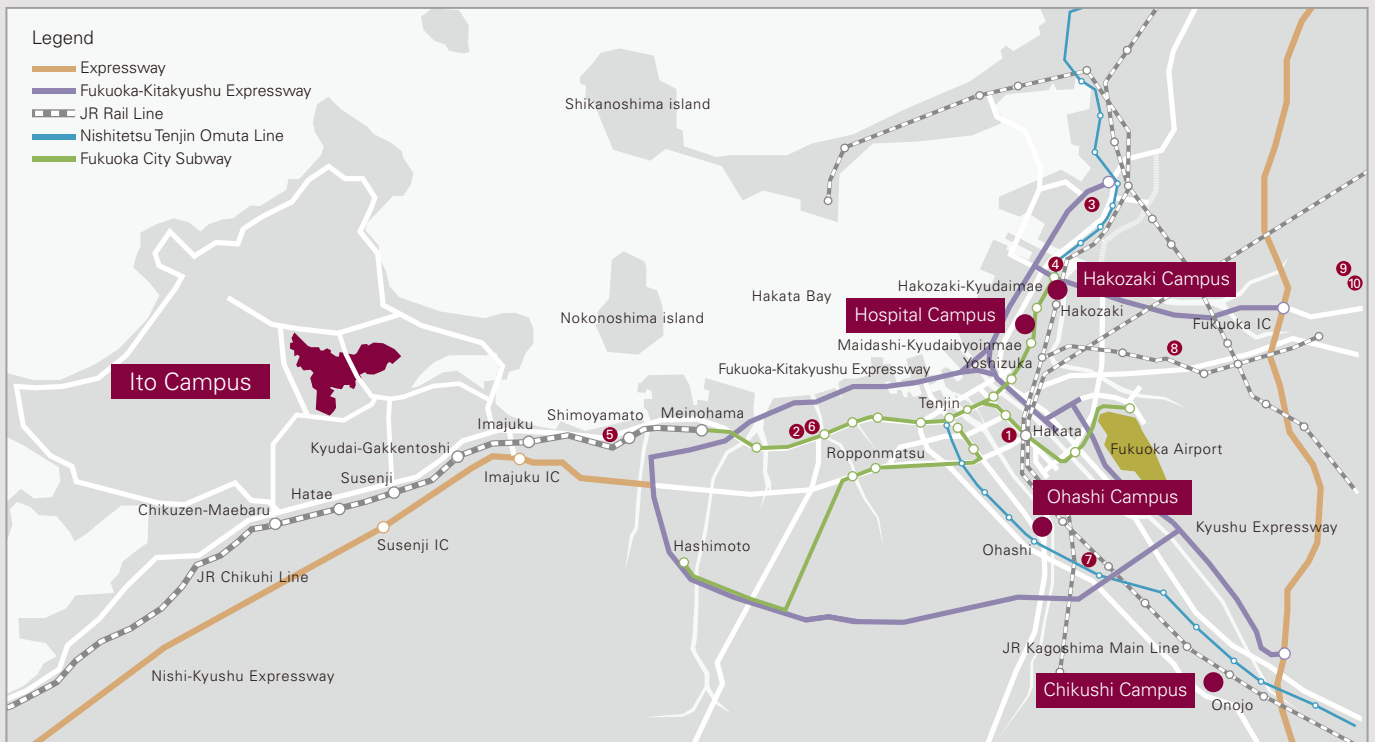
Total **1,972**

Japanese Students Studying Abroad

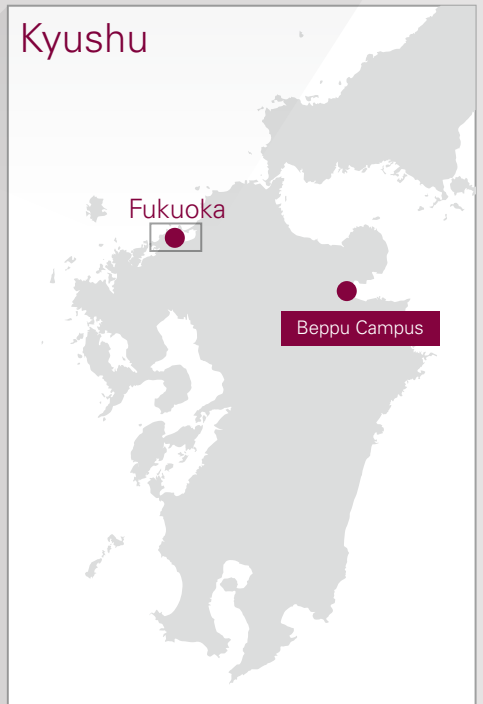
(FY2013)

Total **612**

Campus Locations



- ① Business School (QBS)/Hakata Station Office
- ② Industry-University-Government Collaboration Innovation Plaza (Industry-University-Government Collaboration Management Center)
- ③ International Students House / Dormitories
- ④ Institute of Genetic Resources, Faculty of Agriculture
- ⑤ Kyushu Research Forest (Sawara Training Forest) attached to Faculty of Agriculture
- ⑥ Nishijin Plaza
- ⑦ Ijiri International House
- ⑧ University Farm attached to Faculty of Agriculture
- ⑨ Kyushu Research Forest (Fukuoka Research Forest) attached to Faculty of Agriculture
- ⑩ Medicobotanical Garden attached to Graduate School of Pharmaceutical Sciences



Campus Access

Ito Campus



744 Motooka, Nishi-ku, Fukuoka 819-0395 Tel: 092-642-2111 (Main)



Hakozaki Campus



6-10-1 Hakozaki, Higashi-ku, Fukuoka 812-8581 Tel: 092-642-2111 (Main)



Hospital Campus



3-1-1 Maidashi, Higashi-ku, Fukuoka 812-8582 Tel: 092-641-1151 (Main)



Chikushi Campus



6-1 Kasuga-koen, Kasuga 816-8580 Tel: 092-583-7555 (Main)



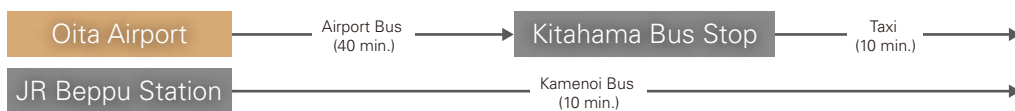
Ohashi Campus



4-9-1 Shiobaru, Minami-ku, Fukuoka 815-8540 Tel: 092-553-4400 (Main)



Beppu Campus



4546 Tsurumihara, Tsurumi, Beppu, Oita Pref. 874-0838 Tel: 0977-27-1600 (Main)



*All times are approximate.



KYUSHU
UNIVERSITY

<http://www.kyushu-u.ac.jp/english/>