



At a Glance

Fast Facts 2016

Kyushu University

九州大学

KYUSHU UNIVERSITY

Kyushu University

Founded in 1911, Kyushu University is a leading research-oriented institute of higher education in Fukuoka, which is historically renowned as Japan's gateway to Asia for profound cultural and economic interactions due to its geographical proximity to continental Asia. The University celebrated its first centennial anniversary in 2011 and is taking bold steps forward into its second century.

With enrollment of 20,000 students, it is comprised of 11 undergraduate schools, 18 graduate schools, 17 faculties, 5 research institutes, University hospital, and University library, as well as over 50 affiliated research centers.

The international student population is more than 2000, representing over 90 countries, which reflects our steadfast commitment to internationalization.

A new, state-of-art campus, Ito Campus, is designed for the development of the next-generation technologies, with particular focus on the environment and energy-related researches.

Furthermore, blessed with an abundance of nature and history, this new campus is a comprehensive research center that reflects our high regard for the preservation of green areas, groundwater, landscape, and historical remains, and has achieved harmonious co-existence with its surrounding natural environment.

The Japanese Government recently launched the Top Global University Projects under the ten-year funding scheme.

Selected as one of the initiatives for university's internationalization, Kyushu University is implementing major reforms of portfolios in research, education, and governance for creation of top global hub campus.

We are dedicated to reinforcing various international programs for students and international research collaborations.

So far the University has launched 64 degree programs taught solely in English and we are developing more study programs collaborating with international partners.



Chronological Outline

Apr. 1903 Fukuoka Medical College established.

Jan. 1911 Kyushu Imperial University established.

May 1949 Kyushu University established under National School Establishment Law.

Oct. 2003 Kyushu Institute of Design integrated.

Apr. 2004 Launched as National University Corporation.

May 2011 First centennial anniversary celebrated.

Location



About Fukuoka

Fukuoka is Kyushu's largest city, with a population of 1,550,000. The climate is generally mild.

The central part of the current Fukuoka City has another name: Hakata.

Historically the city was divided into two parts by the Naka River. The western bank of the river was called Fukuoka, and the eastern bank was called Hakata.

While Fukuoka was mainly inhabited by samurai, many enterprising merchants lived in the Hakata area.

This area has flourished for approximately 2,000 years, and the way of life is closely tied to tradition, especially to festivals. Many international students at Kyushu University greatly enjoy joining these festivals.

Fukuoka City has now become the largest and most active business center in Kyushu.

It is home to national and prefectural governmental offices and many regional headquarters of major companies.

In addition, Fukuoka has a highly developed infrastructure. Fukuoka Airport provides direct access to most major Asian cities with short and comfortable flight times, and is one reason Fukuoka is the gateway to Asia.

In addition, Fukuoka is blessed with beautiful natural surroundings.

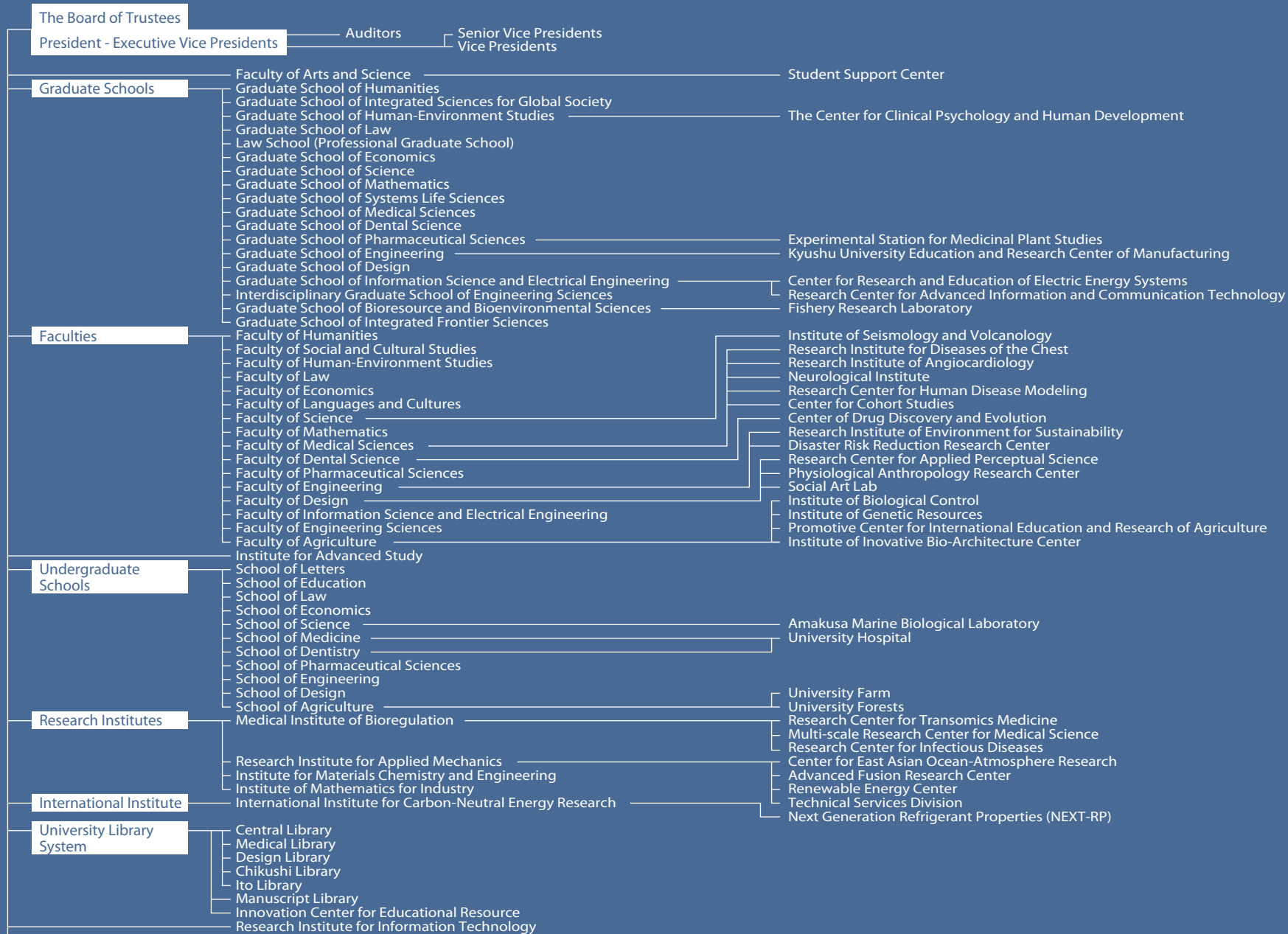
There are pristine beaches and lush valleys just 20 minutes' drive from the heart of the city.

Fukuoka City is very supportive of its foreign residents and visitors.

Please enjoy your stay in this city, which is rich with natural scenery, tradition, bustling businesses and warm-hearted people.



Organization





Institutes for the Joint Use of Kyushu University

- Institute of Tropical Agriculture
- Central Institute of Radioisotope Sciences and Safety
- Center of Advanced Instrumental Analysis
- Center of Environment and Safety
- Natural Disaster Information Center of Western Japan
- International Student Center
- Kyushu University Museum
- System LSI Research Center
- Research Center for Korean Studies
- Research Center for Education in Health Care System
- Research Institute of Superconductor Science and Systems
- Admission Center
- Kansei Design Center
- Art, Science and Technology Center for Cooperative Research
- International Research Center for Hydrogen Energy
- Kyushu University Archives
- Center for Future Chemistry
- Research Center for Steel
- Low Temperature Center
- Center for Accelerator and Beam Applied Science
- INAMORI Frontier Research Center
- Research and Education Center of Carbon Resources
- Research Center for Synchrotron Light Applications
- Incubation Center for Advanced Medical Science
- Research Center for Plasma Turbulence
- Material Management Center
- Center for Molecular Systems

- Center for Japan-Egypt Cooperation in Science and Technology
- Center of Plasma Nano-interface Engineering
- Center for Advanced Medical Innovation
- Robert T. Huang Entrepreneurship Center
- EU Centre
- Research Center for Environment and Developmental Medical Sciences
- Biotron Application Center
- Yunus & Shiiki Social Business Research Center (SBRC)
- Research Center for Advanced Biomechanics
- Next-Generation Fuel Cell Research Center
- International Center for Space Weather Science and Education
- Center for Science, Technology and Innovation Policy Studies
- Research Center for Advanced Particle Physics
- Green Asia Education Center
- Education center for global leaders in molecular systems for device
- Kyushu University Research Center for Organelle Homeostasis
- Research Center for Hydrogen Industrial Use and Storage
- Advanced Asian Archaeological Research Center
- Research and Education Center for Advanced Energy Materials, Devices, and Systems
- Counseling and Health Center
- Research and Development Center for Taste and Odor sensing
- Institute of Decision Science for a sustainable Society
- Center for Asia-Pacific Future Studies(CAFS)
- Center for Disruptive Cardiovascular Medicine
- The Ultramicroscopy Research Center
- Cyber Security Center

Centers for Leading Scientific Research

- Research Center for Advanced Immunology
- Epigenome Network Research Center
- Center for Asian Conservation Ecology
- Human Proteome Research Center
- Center for Organic Photonics and Electronics Research
- Advanced Research Center for Electric Energy Storage (ACE₂)
- Innovative Market Design Research Center
- Advanced Transdermal Drug Delivery System Center

- Research Center for Architecture-Oriented Formal Methods
- 3D/4D Structural Materials Research Center
- Center for Integrated Atmospheric Environment Research(CIAR)
- Research Center for Quantum Nano-Spin Sciences
- Center for Small Molecule Energy
- Research Center for Tertiary Education and Qualifications
- Model Organism Research Center
- Research Center for Live-Protein Dynamics
- International Research Center on Giant Straining for Advanced Materials(IRC-GSAM)
- Center for Clinical and Translational Research(CCTR)
- Urban Institute
- R&D Center for Smart Mobility
- Research Center for Planetary Trace Organic Compounds
- Research Center for Magnetic-nanoparticle-based Biosensing Systems
- Materials Strengthening Science Research Center
- International Research Center for Multidisciplinary Computational Anatomy

Organizations

- Organization for Scientific Research Promotion
- Organization for the Planning and Coordination of International Affairs

Information Infrastructure Initiative

Relocation Coordination Executive

Endowment Management Executive

Public Relations Initiative

Global Project Headquarters

Planning Offices, etc.

- Office for the Planning and Coordination of International Affairs (OPCIA)
- Office for the Promotion of University-Community Relations
- New Campus Planning Office
- Office for Promotion of Environmental Management, Health and Safety
- Office for the Promotion of Gender Equality
- Office for the Coordination of University Education Development
- Working Groups for IT Environment
- Office for Relocation Coordination
- International Legal Office
- Office for Endowment Management
- Office for Alumni Outreach
- Office for Strategy Promotion of Public Relations
- SHARE Office
- Academic Research and Industrial Collaboration Management Office of Kyushu University
- Editorial Office for Centennial Publication of Kyushu University
- Office of Institutional Research

Fast Facts

Students

18,747

Number of students

(Undergraduate and Graduate total)
(As of May 1, 2015)

We have enough students to fill FUKUOKA YAHUOKU! DOME about halfway.



Number of students **18,747**
FUKUOKA YAHUOKU!
DOME capacity **38,500**

2,089

Number of faculty

(including 278 non-Japanese faculty)
(As of May 1, 2015)

9:1

student-to-faculty ratio

We can provide education and research individually tailored to each student.

Undergraduate Schools

Number of undergraduate students

Total 11,844

72% (Male) **28%** (Female)

School of Letters 716

40% **60%**

School of Education 225

36% **64%**

School of Law 853

64% **36%**

School of Economics 1,094

78% **22%**

School of Science 1,283

81% **19%**

School of Medicine 1,314

59% **41%**

School of Pharmaceutical Sciences 334

62% **38%**

School of Dentistry 399

60% **40%**

School of Engineering 3,692

91% **9%**

School of Design 922

62% **38%**

School of Agriculture 1,012

57% **43%**

The 21st Century Program 120 *

33% **67%**

*Note: The number of undergraduate students who are taking 21st Century Program

(As of May 1, 2015)

Graduate Schools

18

graduate schools

Many options for graduate level study!

Graduate School of Humanities

Graduate School of Integrated Sciences for Global Society

Graduate School of Human-Environment Studies

Graduate School of Law

Law School (Professional Graduate School)

Graduate School of Economics

Graduate School of Science

Graduate School of Mathematics

Graduate School of Systems Life Sciences

Graduate School of Medical Sciences

Graduate School of Dental Science

Graduate School of Pharmaceutical Sciences

Graduate School of Engineering

Graduate School of Design

Graduate School of Information Science and Electrical Engineering

Interdisciplinary Graduate School of Engineering Sciences

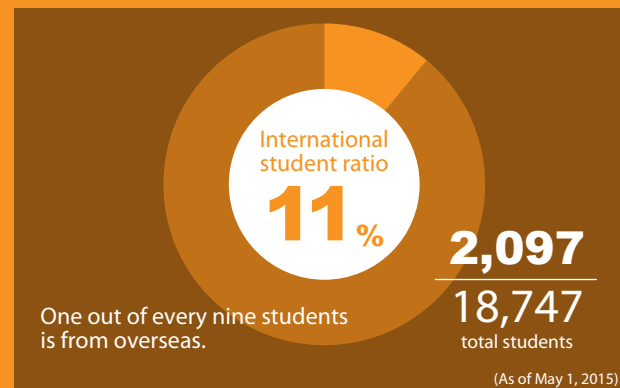
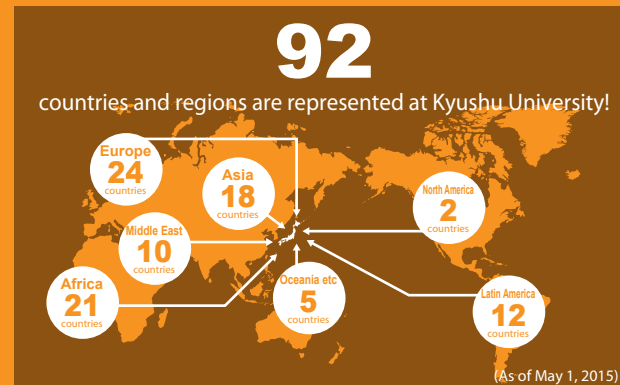
Graduate School of Bioresource and Bioenvironmental Sciences

Graduate School of Integrated Frontier Sciences

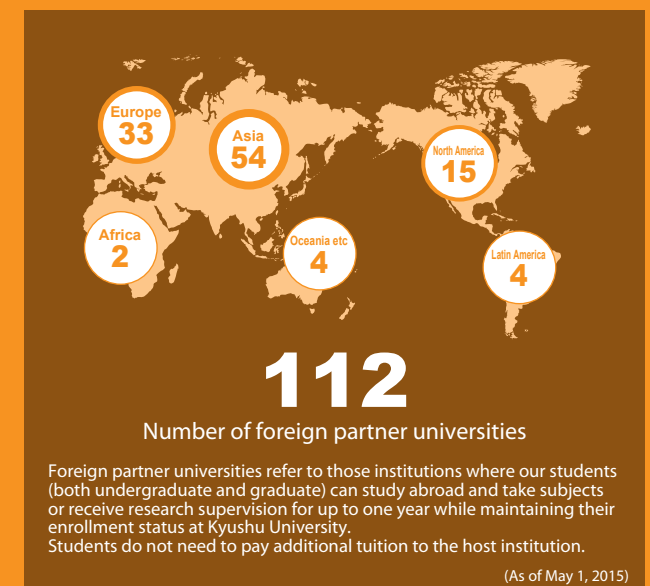
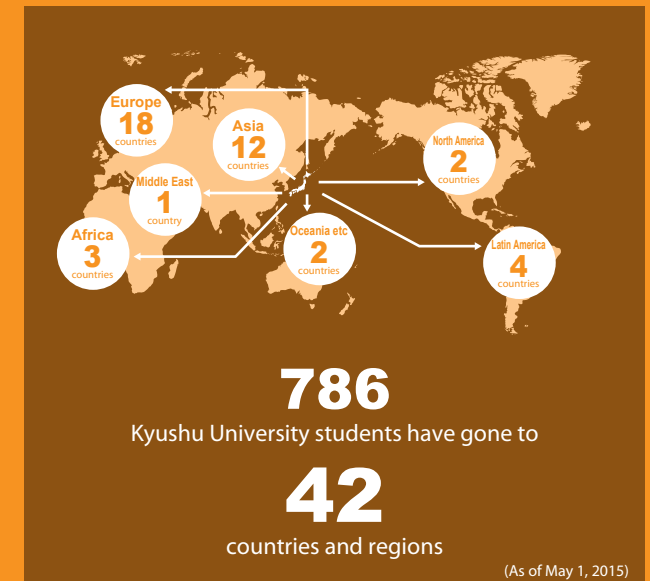




Inbound



Outbound



Fast Facts

Dormitories

Dormitory 1

254

single rooms

Ito Kyosokan - Harmony House -

551

single rooms

30

couple rooms

Dormitory 2

248

single rooms

26

couple rooms

Ito Guest House

27

single rooms

4

couple rooms

Dormitory 3

Shared rooms for

136

people (34 units X 4 people)

2

family rooms

Shiiki Hall

Diameter

100_m

Number of international
conferences held

144

(No.1 in Japan*)

Concert hall
Maximum Capacity

3,000



*JNTO Statistics on International Conferences, 2014





Research

Funded research funding

¥ **6.3**
billion

689 projects

Funded research refers to research conducted on behalf of corporate or other partners who choose us because of the diversity of our researchers and research facilities.

Joint collaborative research funding

¥ **2.7**
billion

698 projects

Joint collaborative research refers to research conducted by teams consisting of our researchers and researchers from corporate or other partners.

Grants-in-Aid for Scientific Research

¥ **6.9**
billion

Grants-in-Aid are competitive research grants provided by the government to fund an original and exploratory research in an effort to advance all levels of scientific research.

Number of citations

49,787*

Number of times articles published by our faculty have been cited by other scholars.

*Thomson Reuters via University Rankings 2016 by Asahi Shimbun Publications

Patents applications

418

Wind lens and others

Patent licenses

245

¥ 51.61 million

(FY2014)

Library & Museum & Hospital

University Library

4.25

million items

A four-year student would have to read

2,910 books a day to finish all items

(As of May 1, 2015)

Number of pieces in the collection at Kyushu University Museum

(and other facilities)

7.5

million items

A world-class insect collection of more than
4 million specimens

Documents; Plants; Animals, Animals for medical research;
Archeological artifacts; Insects; Marine organisms;
Core samples

(As of 2015)

Number of University Hospital beds

1,415

(As of May 1, 2015)

State-of-the-art Campus Facilities

Kyushu University is held in high regard particularly for its innovative research in new energy technologies, including hydrogen energy, clean coal technologies, nuclear fusion, and wind turbine technology. Its new campus with state-of-the-art facility is designed for the development of science-driven technological solutions to realize a sustainable and environmentally-friendly society.

