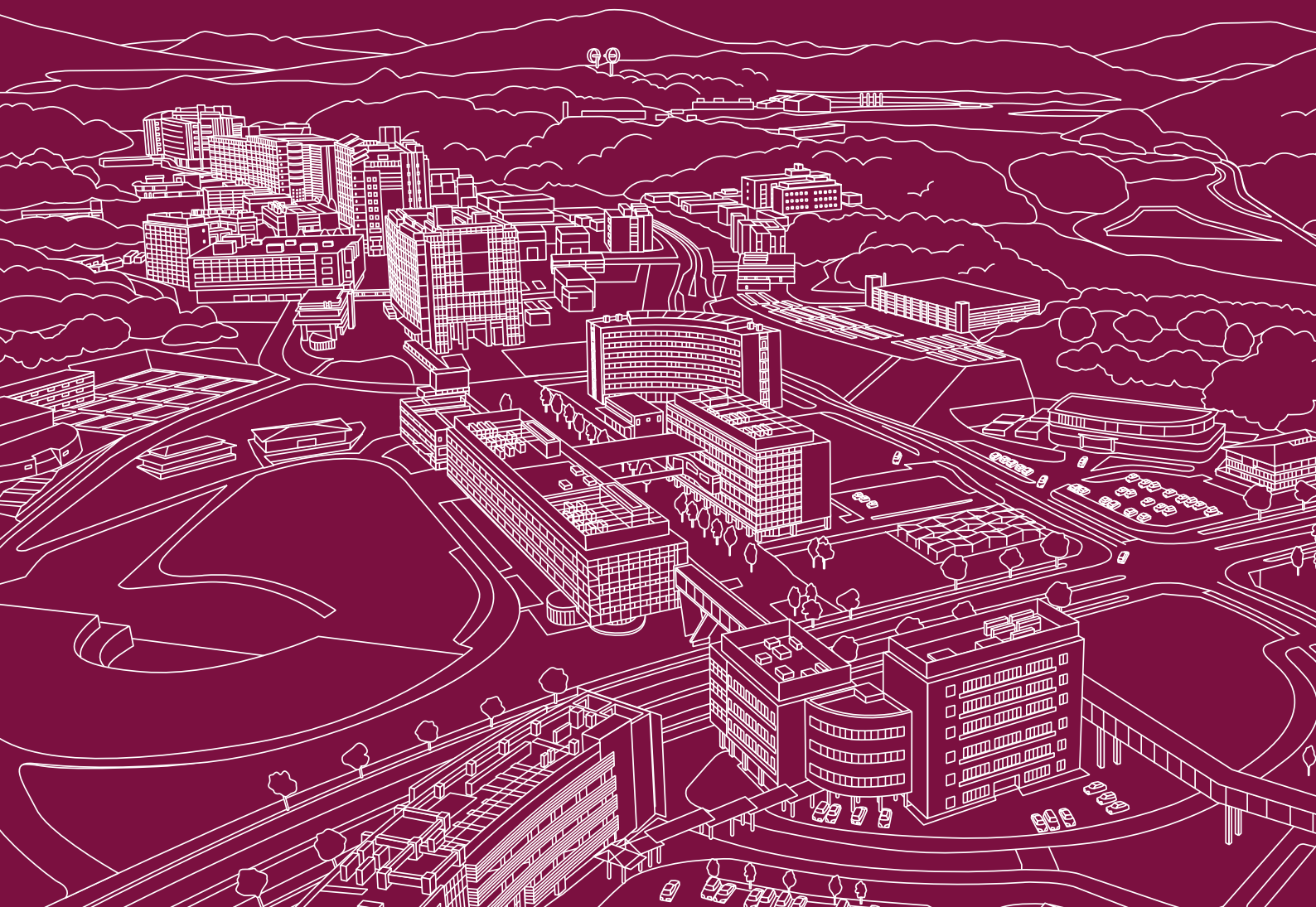


At a Glance

Fast Facts 2017-2018

Kyushu University



Founded in 1911, Kyushu University is a leading research-oriented institute of higher education in Fukuoka, which is historically renowned as Japan's gateway to Asia for profound cultural and economic interactions due to its geographical proximity to continental Asia. The University celebrated its first centennial anniversary in 2011 and is taking bold steps forward into its second century. With enrollment of 20,000 students, it is comprised of 11 undergraduate schools, 18 graduate schools, 17 faculties, 5 research institutes, University hospital, and University library, as well as over 50 affiliated research centers. The University's 12th undergraduate school, the School of Interdisciplinary Science and Innovation, will be launched in April 2018. The international student population is more than 2000, representing over 100 countries, which reflects our steadfast commitment to internationalization. A new, state-of-art campus, Ito Campus, is designed for the development of the next-generation technologies, with particular focus on the environment and energy-related research. Furthermore, blessed with an abundance of nature and history, this new campus is a comprehensive research center that reflects our high regard for the preservation of green areas, groundwater, landscape, and historical remains, and has achieved harmonious co-existence with its surrounding natural environment.



Chronological Outline

Apr. 1903 Fukuoka Medical College established.

Jan. 1911 Kyushu Imperial University established.

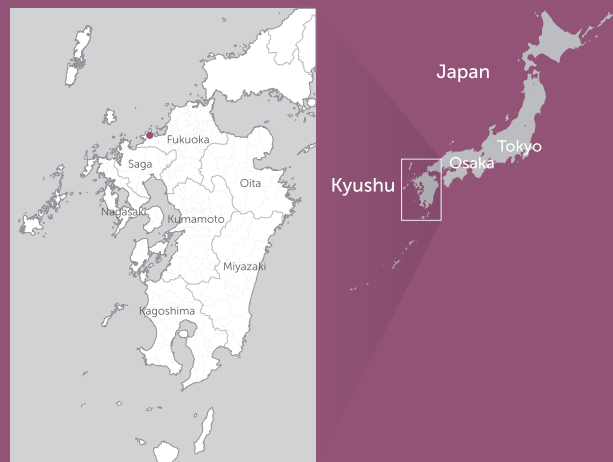
May 1949 Kyushu University established under National School Establishment Law.

Oct. 2003 Kyushu Institute of Design integrated.

Apr. 2004 Launched as National University Corporation.

May 2011 First centennial anniversary celebrated.

Location



About Fukuoka

Fukuoka is Kyushu's largest city, with a population of 1,570,000.

Fukuoka enjoys the highest population growth among Japanese cities and also increases its reputation as the fastest growing startup city. The climate is generally mild.

The central part of the current Fukuoka City has another name: Hakata.

Historically the city was divided into two parts by the Naka River.

The western bank of the river was called Fukuoka, and the eastern bank was called Hakata.

While Fukuoka was mainly inhabited by samurai, many enterprising merchants lived in the Hakata area.

This area has flourished for approximately 2,000 years, and the way of life is closely tied to tradition, especially to festivals.

Many international students at Kyushu University greatly enjoy joining these festivals.

Fukuoka City has now become the largest and most active business center in Kyushu.

It is home to national and prefectural governmental offices and many regional headquarters of major companies.

Fukuoka Airport provides direct access to most major Asian cities with short and comfortable flight times.

In addition, Fukuoka is blessed with beautiful natural surroundings.

There are pristine beaches and lush valleys just 20 minutes' drive from the heart of the city.

Fukuoka City is very supportive of its foreign residents and visitors.

Please enjoy your stay in this city, which is rich with natural scenery, tradition, bustling businesses and warm-hearted people.

Fast Facts

Students

18,707

Number of students

(Undergraduate and Graduate total)
(As of May 1, 2017)

We have enough students to fill FUKUOKA YAHUOKU! DOME about halfway.



Number of students **18,707**
FUKUOKA YAHUOKU!
DOME capacity **38,500**

2,057

Number of faculty

(including 289 non-Japanese faculty)
(As of May 1, 2017)

9:1

student-to-faculty ratio

We can provide education and research individually tailored to each student.

Undergraduate Schools

Number of undergraduate students

Total **11,746**

72% (Male) 28% (Female)

School of Letters **725**

42% 58%

School of Education **226**

41% 59%

School of Law **858**

65% 35%

School of Economics **1,093**

77% 23%

School of Science **1,247**

81% 19%

School of Medicine **1,322**

58% 42%

School of Dentistry **325**

61% 39%

School of Pharmaceutical Sciences **392**

62% 38%

School of Engineering **3,644**

91% 9%

School of Design **896**

64% 36%

School of Agriculture **1,018**

56% 44%

The 21st Century Program **113 ***

39% 61%

*Note: The number of undergraduate students who are taking 21st Century Program

(As of May 1, 2017)

Graduate Schools

18

graduate schools

Many options for graduate level study!

Graduate School of Humanities

Graduate School of Integrated Sciences for Global Society

Graduate School of Human-Environment Studies

Graduate School of Law

Law School (Professional Graduate School)

Graduate School of Economics

Graduate School of Science

Graduate School of Mathematics

Graduate School of Systems Life Sciences

Graduate School of Medical Sciences

Graduate School of Dental Science

Graduate School of Pharmaceutical Sciences

Graduate School of Engineering

Graduate School of Design

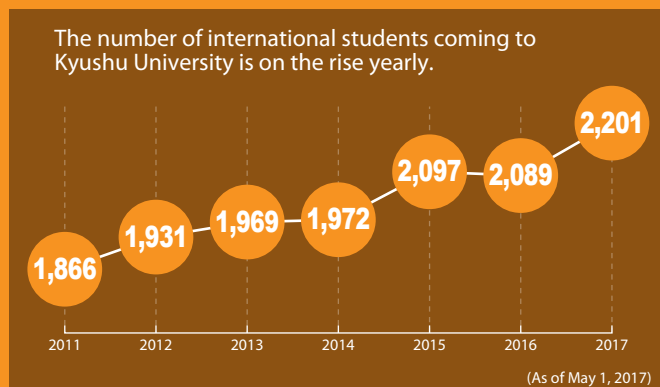
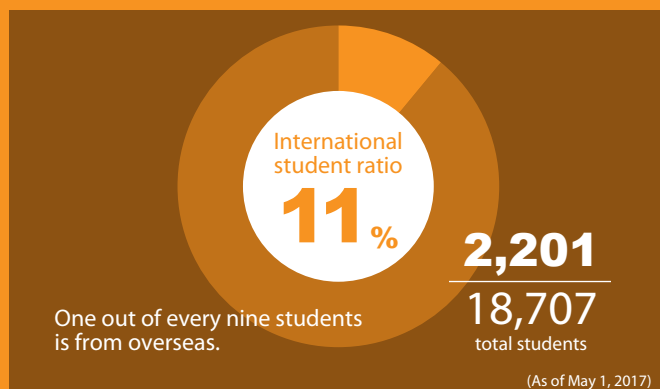
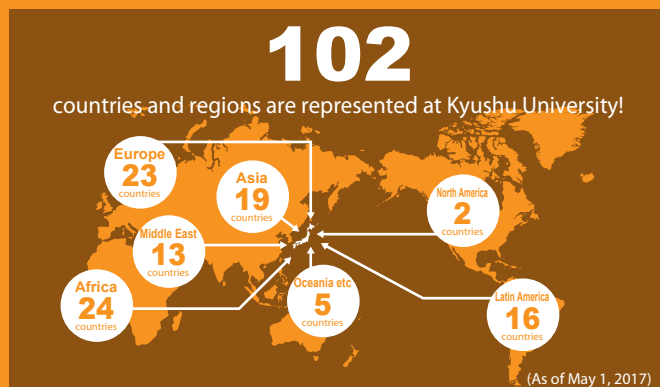
Graduate School of Information Science and Electrical Engineering

Interdisciplinary Graduate School of Engineering Sciences

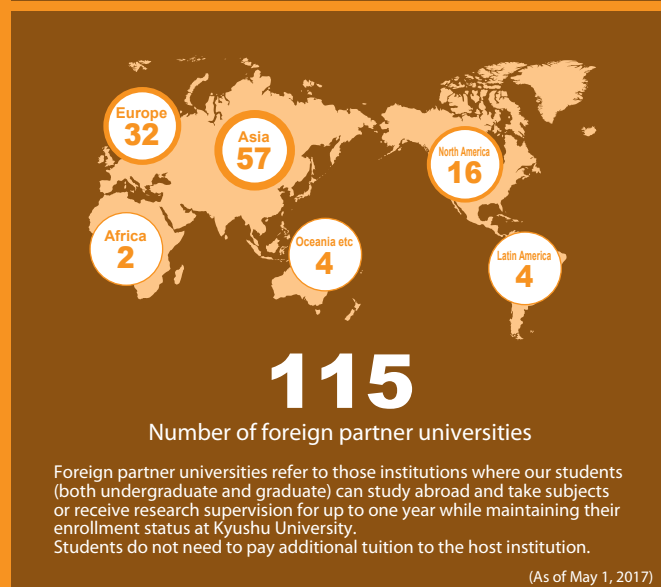
Graduate School of Bioresource and Bioenvironmental Sciences

Graduate School of Integrated Frontier Sciences

Inbound



Outbound



Fast Facts

University Budget



Ito Campus (New Flagship Campus)

2,717,130^{m²}

Research

Funded research



882 projects

Funded research refers to research conducted on behalf of corporate or other partners who choose us because of the diversity of our researchers and research facilities.

Joint collaborative research



791 projects

Joint collaborative research refers to research conducted by teams consisting of our researchers and researchers from corporate or other partners.





Dormitories

Dormitory 1

254

single rooms

Ito Kyosokan - Harmony House -

551

single rooms

30

couple rooms

Dormitory 2

248

single rooms

26

couple rooms

Ito Guest House

27

single rooms

4

couple rooms

Dormitory 3

Shared rooms for

136

people (34 units X 4 people)

2

family rooms

Shiiki Hall

Diameter

100^m

Number of international conferences held

144

(No.1 in Japan*)

Concert hall

Maximum Capacity

3,000



*JNTO Statistics on International Conferences, 2014

The University in the Community

We have a lot to offer. Our hospital, library, and museum are highly recognized and provide a variety of opportunities and services inside and outside the university.

The brand new Central Library, which is partly open now, will be one of the largest libraries in Japan in October 2018.





New Central Library

Library & Museum & Hospital

University Library

4.28

million items

A four-year student would have to read

2,930 books a day to finish all items

(As of May, 2017)

Number of pieces in the collection at Kyushu University Museum

(and other facilities)

7.5

million items

A world-class insect collection of more than
4 million specimens

Documents; Plants; Animals, Animals for medical research;
Archeological artifacts; Insects; Marine organisms;
Core samples

(As of 2016)

Number of University Hospital beds

1,415

Kyushu University Hospital:
Accredited by Japan Medical Accreditation for
International Patients (JMIP) in March 2017

(As of March, 2017)

Go Worldwide

Through research and innovation, universities can make a difference. We are committed to addressing global problems facing our society and humanity.

Kyushu University has decided to organize a series of international symposiums, which focus on important research themes and issues, by inviting world-leading scholars to share their expertise and wisdom as our guest speakers. The first symposium was held in Stockholm in October 2017.

Also, it is a great pleasure for Kyushu University to host the first ever WSSF conference in Asia. The 4th World Social Science Forum will be held in Fukuoka in September 2018.





League Tables

The Times Higher Education
Japan University Rankings 2017:

7th out of 406 Universities

	World	Asia	Japan
QS 2018	128th	29th	7th
QS 2017	135th	32nd	8th

