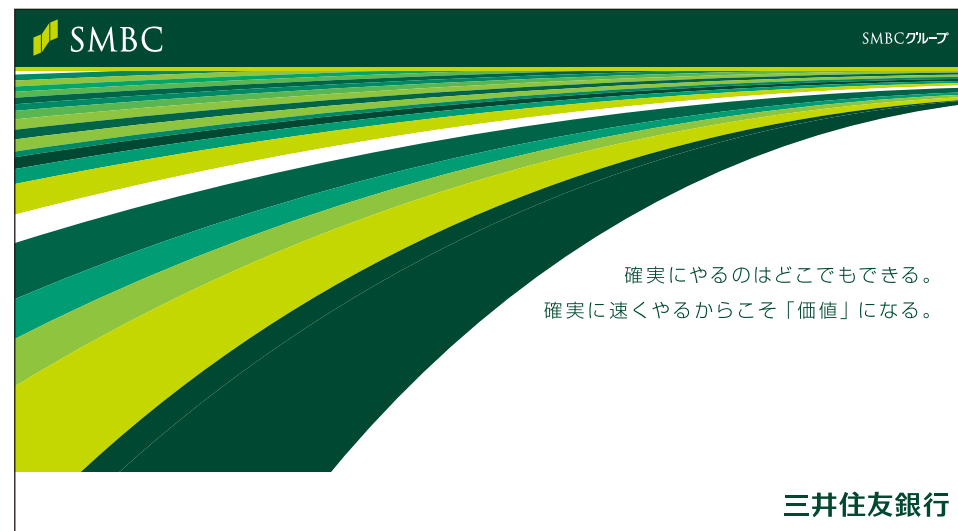


Published:
December
2022

KYUSHU UNIVERSITY

INTEGRATED REPORT 2022

For inquiries regarding the contents of advertisements, please contact the advertiser directly.



Published by the Kyushu University Finance Department
Address : 744 Motoooka, Nishi-ku, Fukuoka
TEL : 092-802-2335 E-mail : zassomu@jimu.kyushu-u.ac.jp
URL : <https://www.kyushu-u.ac.jp>



Driving social change with integrative knowledge

In November 2021, Kyushu University was selected by the Minister of Education, Culture, Sports, Science and Technology to become a Designated National University Corporation, and in parallel with this achievement, we formulated and announced Kyushu University Vision 2030, which outlines our aim to become a “university that drives social change with integrative knowledge” in a manner that contributes to social change by promoting digital transformation and resolving social issues.

The university engages in a diverse range of research fields, from the natural sciences to the humanities and social sciences and even design, and we believe that, by combining and integrating these research fields, we will be able to generate the integrative knowledge needed to resolve social issues.

Through application of this integrative knowledge, we aim to promote social change through initiatives co-created with local governments, companies, and communities, and to become a driving force toward the development of a sustainable society that prioritizes people's well-being extending from Fukuoka, throughout

Kyushu, across Japan, to the rest of Asia, and around the world.

The world today faces a number of global issues, such as climate change-induced natural disasters, the COVID-19 pandemic, the Russian invasion of Ukraine, and other regional conflicts. These issues are both complex and profound, and we believe that no single research field or discipline has the capacity to resolve them alone.

This is why we are constructing a research system – under the assumption that researchers will engage in curiosity-driven research – with a clear focus on interdisciplinary collaboration and capable of enough foresight at the entry stage of research activities to identify what is needed to advance the research toward the exit stage of social implementation. At the core of these activities are the Open Innovation Platform, the Data-Driven Innovation Initiative, and the Integrated Initiative for Designing Future Society, launched in April to serve as a foundation for social change and innovation.

To promote these initiatives, it is essential for us to

collaborate with a diverse range of stakeholders, including local governments, businesses, and citizens. We intend to enter into new institutional collaboration agreements and strengthen our partnerships with consortiums of stakeholders from industry, academia, the government, and the public, and we hope to build close, collaborative relationships with communities, including expanding opportunities for the university to receive feedback and suggestions.

This Integrated Report is intended to provide information on Kyushu University Vision 2030 as well as communicate the current state of the university as we continue to move toward its realization.

We hope that this report will help you understand the university's vision for the future, as well as our activities, initiatives, and challenges. We look forward to your continued support and cooperation.

December 2022

24th President,
Kyushu University

Tatsuro Ishibashi



Kyushu University Integrated Report 2022

Contents	President's Message 01	Kyushu University as a Partner	Status of Finances Supporting the Activities of Kyushu University 39	Kyushu University Fund Initiatives 55
	History 03	To the Public 17	Balance Sheet 41	Campus Profile 57
	At a Glance 05	To Students, Aspiring Students, and Parents 23	Profit & Loss Statement 42	
	Value Creation Process 07	To Hospital Users and Medical Professionals 27	Cash Flow Statement 43	
	University's Vision for the Future Kyushu University VISON 2030 09	To the Community 32	Financial Structure (Financial Report) 44	
	Designated National University Corporation Proposal 11	To Businesses and Researchers 33	Financial Indicators 45	
	Core Organizations for Realizing Our Vision 12	To Alumni 37	External Funds Received 47	
	Governance 13		Financial Information, Results, and Performance by Segment 49	
	Mid-Term Objectives / Mid-Term Plans 15			

History

Kyushu University was originally founded in 1903 as Fukuoka Medical College. In 1911, it was reorganized and re-established as Kyushu Imperial University, which consisted of a College of Medicine and a College of Engineering. Later, the School of Agriculture and the School of Law and Letters were established, and with the creation of the School of Science in 1939, it became a full-fledged comprehensive university. In 1949, the School of Education was established in parallel with the university's relaunch under a new educational system as Kyushu University. The university continued to develop and expand,

eventually establishing the School of Pharmaceutical Sciences, and later the School of Dentistry. In 2000, the university introduced a system of graduate schools and faculties. It later integrated the Kyushu Institute of Design in 2003, and took a new step forward in 2004 as a National University Corporation. In 2018, the university established the School of Interdisciplinary Science and Innovation, and completed an integrated relocation to its Ito Campus in the same year.

Mission

With continual and autonomous reforms, while guaranteeing educational quality at an international level, we will aim to be a top-level education and research hub marked by vitality and a willingness to address future issues. We aim to be a university that attracts excellent researchers, accelerates research and innovation that lead to new value creation, and uses integrative

knowledge that fuses the entire spectrum of knowledge – from the natural sciences to the humanities and social sciences and even design – to solve social problems and forge new social and economic systems. In short, a university that drives social change with integrative knowledge.



▲ Front of the College of Engineering (1914)



▲ Einstein's visit to the university (1922)



▲ Main gate of the School of Agriculture (circa 1924)



▲ Main building of the School of Law and Letters (1925)



▲ Faculty of Pharmaceutical Sciences (completed in 1967)



▲ Ceremony commemorating integration of Kyushu University and Kyushu Institute of Design (2003)



▲ Ceremony commemorating establishment of the Ito Campus (2005)



▲ Centennial ceremony (May 12, 2012)

1903

Fukuoka Medical College established

1911

Kyushu Imperial University established
(To become the fourth Imperial University after Tokyo, Kyoto, and Tohoku)

1919

Colleges renamed as School of Medicine and School of Engineering; School of Agriculture established

1924

School of Law and Letters established

1939

School of Science established

1947

Renamed as Kyushu University

1949

School of Law, School of Economics, and School of Letters established

Relaunched under new educational system as Kyushu University; School of Education established

1961

50th anniversary

1964

School of Pharmaceutical Sciences established

1967

School of Dentistry established

1968

Kyushu Institute of Design established

2000

System of graduate schools and faculties established

2003

Integrated the Kyushu Institute of Design

2004

Became a National University Corporation

2005

Ito Campus opens

2011

First centennial anniversary

2018

School of Interdisciplinary Science and Innovation established

Integrated relocation to the Ito Campus

2021

Selected as a Designated National University Corporation

2022

111th anniversary

At a Glance

Facts and Figures


As of May 1, 2022

Number of students: 18,560

(Each  equals 500) (11,683 undergraduate and 6,877 graduate students)



Number of faculty members: 8,102

(Each  equals 500) (2,898 faculty members and researchers; 5,204 administrators, technicians, etc.)




Student-to-faculty ratio 1 faculty member for every 9 students

(Calculation based on the 2,143 full-time faculty members)




Number of hospital beds 1,407

(Each  equals 100)

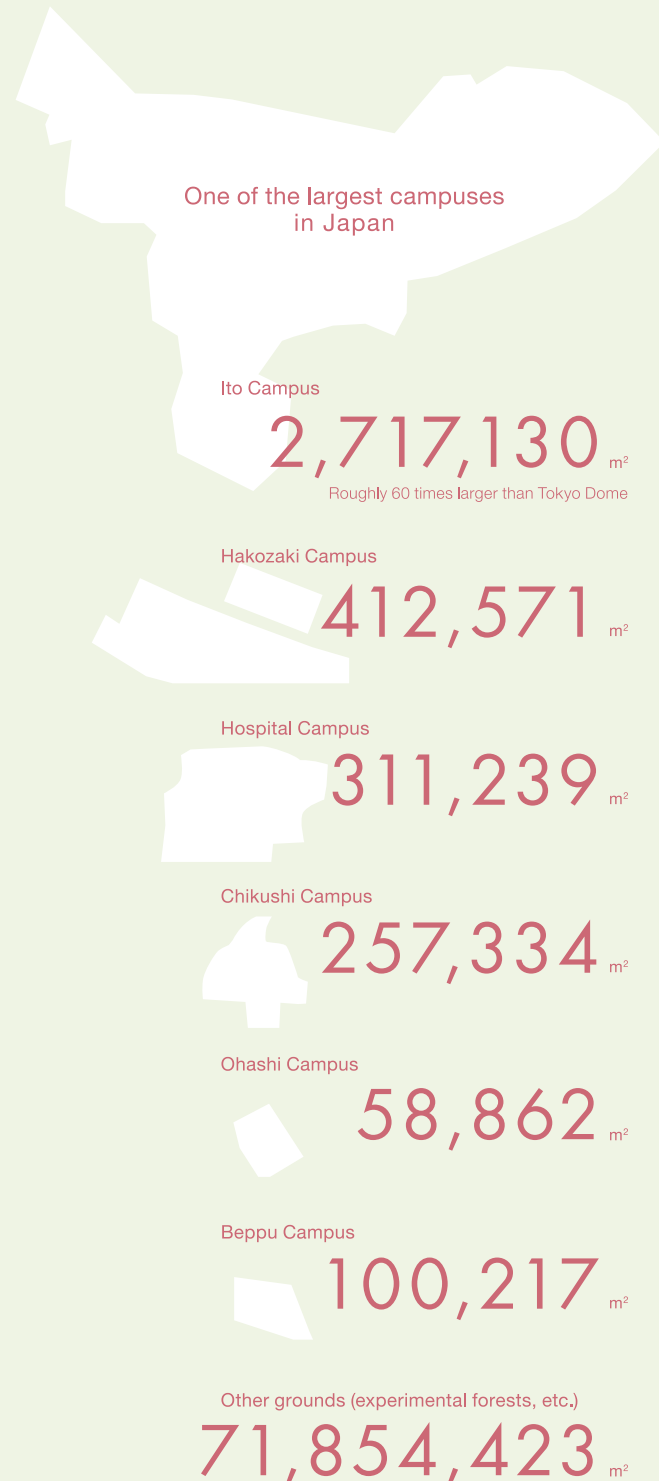


Number of library items 4.3 million

(Each  equals 500,000) (As of March 31, 2022)



Total land area 75,711,776 m²



Number of undergraduate schools

12

School of Interdisciplinary Science and Innovation, School of Letters, School of Education, School of Law, School of Economics, School of Science, School of Medicine, School of Dentistry, School of Pharmaceutical Sciences, School of Engineering, School of Design, School of Agriculture

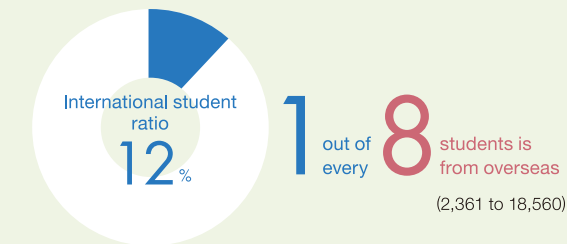
Number of graduate schools

19

Graduate School of Humanities, Graduate School of Integrated Sciences for Global Society, Graduate School of Human-Environment Studies, Graduate School of Law, Law School, Graduate School of Economics, Graduate School of Science, Graduate School of Mathematics, Graduate School of Systems Life Sciences, Graduate School of Medical Sciences, Graduate School of Dental Science, Graduate School of Pharmaceutical Sciences, Graduate School of Engineering, Graduate School of Design, Graduate School of Information Science and Electrical Engineering, Interdisciplinary Graduate School of Engineering Sciences, Graduate School of Bioresource and Bioenvironmental Sciences, Graduate School of Integrated Frontier Sciences, Joint Graduate School of Mathematics for Innovation

Number of international students

2,361



International exchange agreements

707

Cambridge University
Massachusetts Institute of Technology
Princeton University, etc.

Number of international exchanges (studying abroad)

2,361 international students from


102 countries/regions are studying at Kyushu University

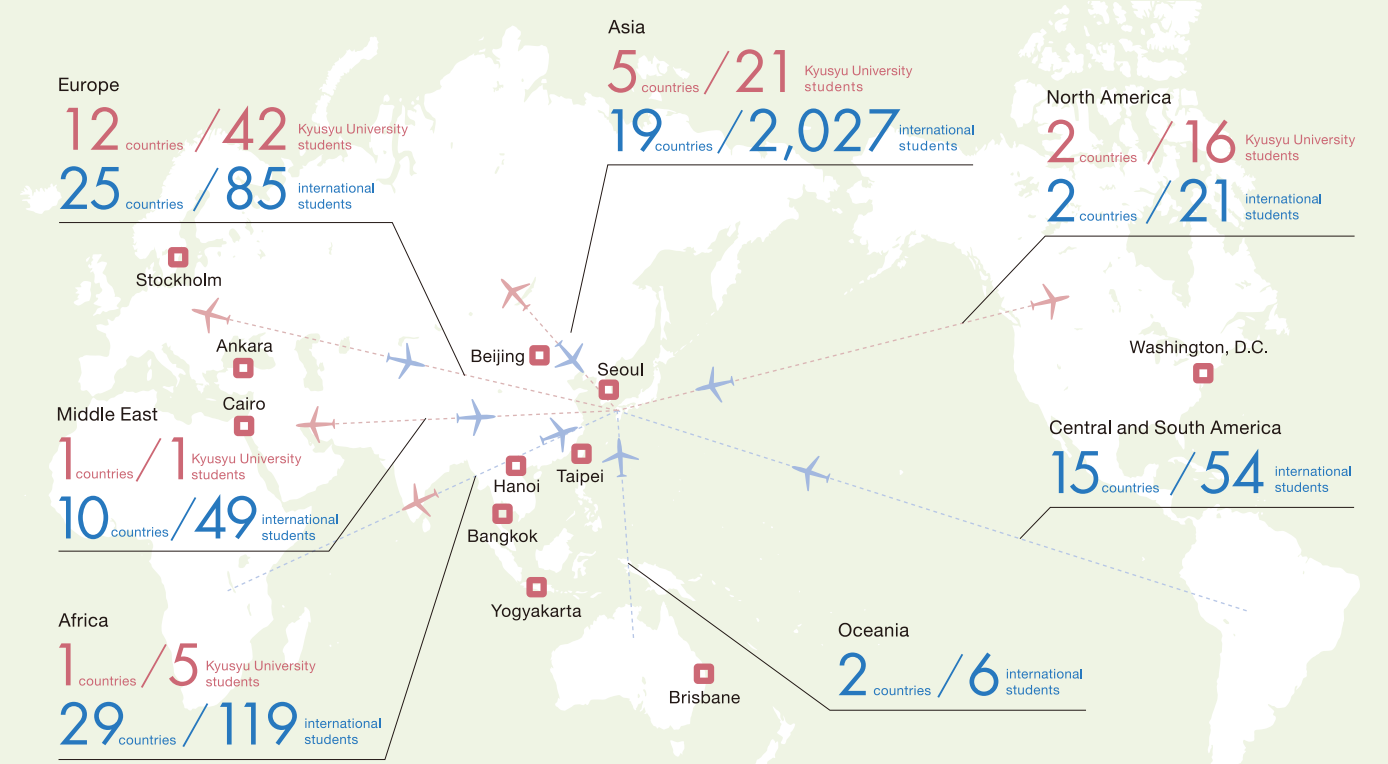
85 Kyushu University students are studying abroad in

21 countries/regions

Overseas offices, branch offices, and project hubs

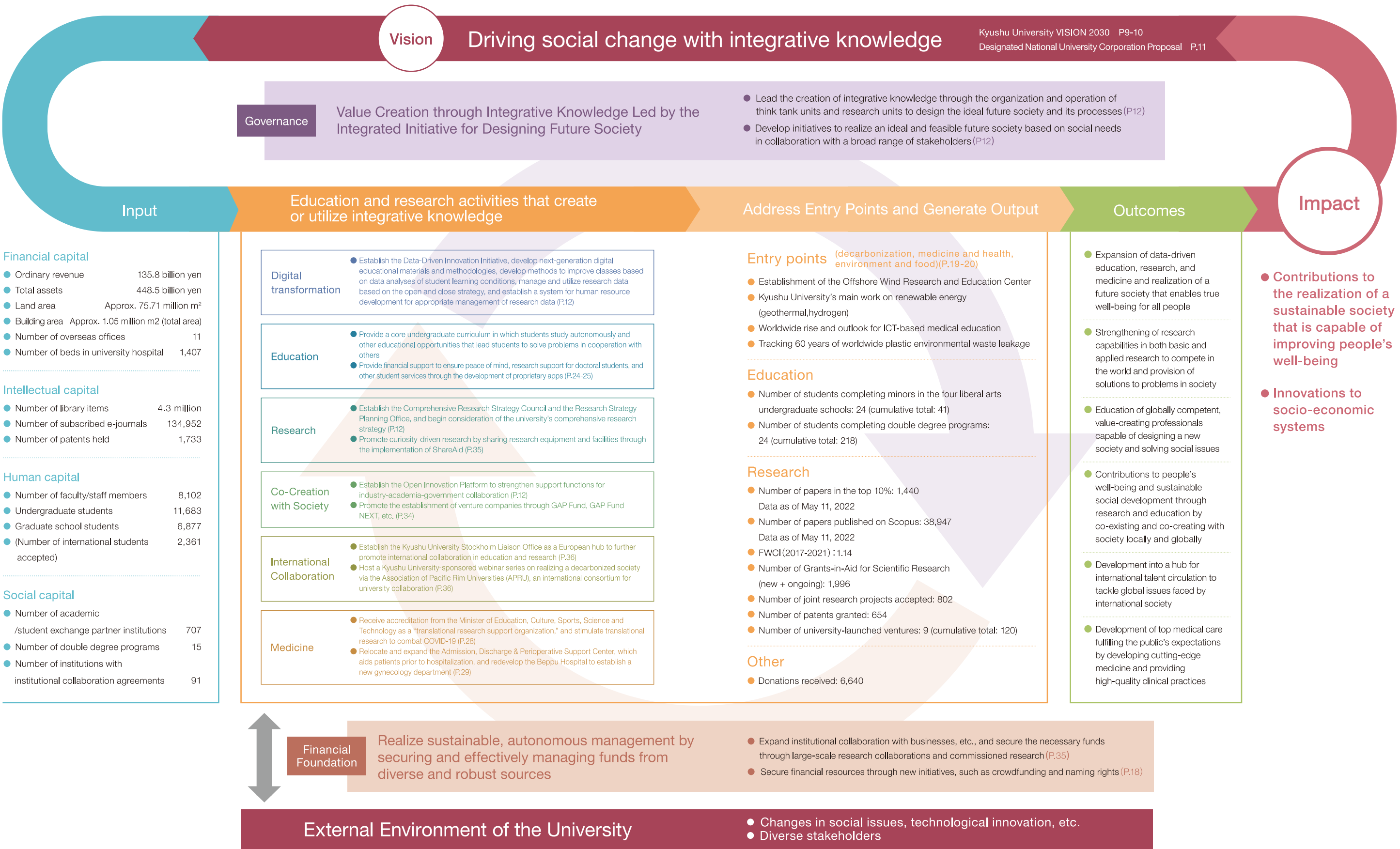
11

each  represents an office or hub



*The COVID-19 pandemic has significantly decreased the number of Kyushu University students studying abroad

Kyushu University's Value Creation Process



University’s Vision for the Future

Kyushu University VISION 2030

Driving social change with integrative knowledge

Kyushu University’s vision of itself in 2030 is one of a university that attracts excellent researchers, accelerates research and innovation that lead to new value creation, and uses integrative knowledge that fuses the entire spectrum of knowledge – from the natural sciences to the humanities and social sciences and even design – to solve social problems and forge new social and economic systems. In short, a university that drives social change with integrative knowledge.

Governance

Shift toward sustainable, business-conscious management led by autonomous and diverse governance

● Enhance evidence-based, strategic decision-making

Gather and analyze data pertaining to various research, education, and outreach activities at the university and use this evidence for guiding university management decisions, planning, evaluation, and resource allocation to achieve self-sustainability.

● Strengthen stakeholder engagement

Expand opportunities for diverse stakeholders to provide new perspectives and advice for use improving university management and strengthen industry-academia-government-citizen collaboration to contribute further to development of the local region.

● Promote diversity, equity, and inclusion

Build an environment that encourages the recruitment of talented people from diverse backgrounds and lifestyles, regardless of nationality, gender, race, and age, in all positions throughout the university and introduce corporate, international, and equity points of view into university management.

Education

Educate globally competent, value-creating professionals capable of designing a new society and solving social issues

● Incorporate problem-solving and value-creation education in all curricula

Introduce perspectives and thinking for identifying and solving problems and creating value into all undergraduate and graduate curricula and train professionals who can design a new society and create new value with integrative knowledge.

● Introduce integrative, cross-disciplinary doctoral degree programs

Train highly skilled knowledge professionals with multifaceted skills and perspectives by introducing integrative, cross-disciplinary doctoral degree programs.

Kyushu University Vision 2030, our ten-year plan for achieving this, was crafted based on numerous discussions across the university, including many with the young faculty members who will lead us into the future.

We are committed to Kyushu University Vision 2030 to further build upon the knowledge accumulated through our history and transform into an institute of higher education that offers advanced world-class research and education that appeal to students and researchers everywhere.

Digital transformation

Expand data-driven education, research, and medicine that continuously create new value and work toward realizing a future society that enables true well-being for all people

● Develop and promote new models for society

Fuse knowledge from multiple disciplines to devise new models for realizing a people-centered society utilizing digital transformation (DX) and disseminate and share the outcomes of this research with society.

● Train data-literate professionals

Establish a research and learning environment that is flush with opportunities to acquire math, data science, and AI skills such as by utilizing open data and train students and researchers to be able to incorporate these skills in their own research fields.

● Promote DX-led projects with high potential for social impact and implementation

Create new value that enables social and economic system reform through data-driven education, research, and medicine and share and utilize the output of these efforts in various regions through collaboration with local governments and the private sector.

● Strengthen industry connections and entrepreneurship training

Boost collaboration on education with the private sector to further diversify career path options upon graduation and introduce system-wide entrepreneurship education to train human resources who will take the challenge to create new value.

● Enhance student support for diverse needs

Enrich the campus and research environment to accommodate the diverse needs of all students to help them succeed and enhance not only financial support, such as with fellowships, but also comprehensive student support.

Research

Strengthen research capabilities in both basic and applied research to compete in the world and provide solutions to problems in society

● Boost research strategizing and support toward creating integrative knowledge

Bolster the university’s functions for strategizing and coordinating research efforts and focus research support through effective resource allocation to reinforce our platform for creating integrative knowledge that advances technology and solves social issues.

● Strengthen cutting-edge research and discovery of new fields

Strategically allocate funds and personnel to accelerate our leading research in key areas for society such as decarbonization, medicine and health, and environment and food and unlock and grow new research areas to continue contributing to society.

● Recruit excellent early-career researchers and enrich the research environment

Introduce a comprehensive support system to recruit, train, and retain excellent early-career, female, and international researchers and make the research environment even more conducive to exploring new ideas through systems such as a Free Quarter for Research (FQR) and research equipment sharing.

International Collaboration

Become a hub for international talent circulation through institution-level international collaboration to tackle global issues and foster future leaders

● Expand and deepen strategic international partnerships

Lead international consortia of higher education institutions to showcase Kyushu University’s strengths and unique features and select and refocus existing and new strategic partnerships to expand and deepen international collaboration.

● Establish a robust collaboration network for early-career researchers

Become a hub for international talent circulation that attracts early-career researchers from home and abroad across disciplines and generations and build a robust research and education network.

● Build a global environment

Improve financial support and the living and work environment for international students and researchers through collaboration with the private sector and encourage exchange and collaboration among Japanese and international students and researchers.

Financial Foundation

Realize sustainable, autonomous management by securing and effectively managing funds from diverse and robust sources

● Increase external funding through institutional agreements

Increase institutional collaboration agreements with the private sector to accelerate research that leads to social impact and application and secure external funding such as through large-scale research collaborations and commissioned research to further advance the university’s research and education resources.

● Boost intellectual property income by accelerating startup creation

Develop multi-layered startup support funds and establish a systematic program to foster entrepreneurs to accelerate the creation of university startups and increase income from intellectual properties.

● Expand donation income by strengthening ties

Increase income from donations by strengthening ties with a wide range of stakeholders, such as alumni and international students, and by enhancing fundraising functions.

Co-Creation with Society

Contribute to people’s well-being and sustainable social development through research and education by co-existing and co-creating with society locally and globally as a hub for knowledge

● Identify issues and make visions by collaborating across sectors

Encourage collaborative projects with industry, academia, government, and citizens by forming a platform for collaborations that cross organizational boundaries and identifying and creating mid- to long-term goals and visions through backcasting.

● Implement research output in society

Quickly capture outstanding research findings that can generate innovation and bring these new technologies to society starting in Fukuoka and Kyushu and extending out to Asia and the world by growing collaborations with society and boosting the creation of intellectual property and startups.

● Promote community outreach and citizen science

Expand community outreach activities to promote research and innovation that are socially responsible and involve the local community in research and educational activities related to social experiments.

Medicine

Strive for top medical care fulfilling the public’s expectations by developing cutting-edge medicine, providing high-quality clinical practices, and training ambitious and exceptional medical professionals

● Provide treatment and train specialists for infectious diseases

Provide clinical care for emerging and re-emerging infectious diseases such as COVID-19 and train medical specialists for supporting these efforts to contribute to ensuring safety and protection of local communities against infectious diseases.

● Become a hub for genomic cancer medicine and for clinical research

Provide cutting-edge medical care in the local community such as through cancer treatment guided by genome analysis and act as a hub for clinical research that contributes to the development of pharmaceutical products and medical equipment.

● Develop personalized healthcare

Develop cutting-edge personalized medicine by collecting clinical data and samples from regional and disease cohorts, analyzing them with newly developing technologies, and revealing the molecular origins of diseases for each individual patient.

Designated National University Corporation Proposal

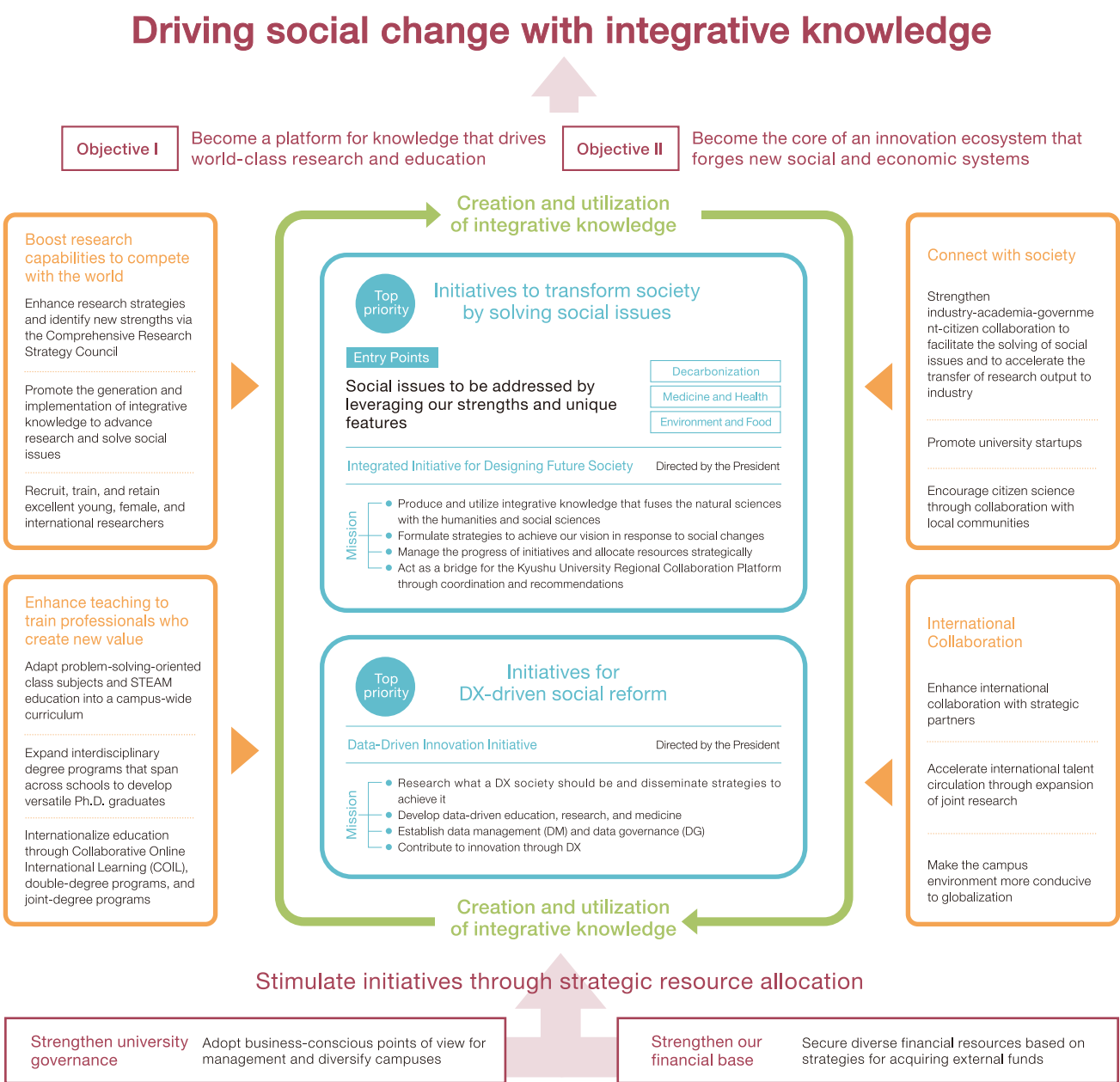
Toward Realization of Our Vision as a Designated National University Corporation

In November 2021, Kyushu University was selected by the Minister of Education, Culture, Sports, Science and Technology as a Designated National University Corporation for the Fourth Mid-Term Objective period as our research and education capabilities are on track to compete with the highest level in the world.

As a Designated National University Corporation, Kyushu University will compete with other world-leading universities and actively promote its achievements in furthering economic and

social development. The university will play an active role in promoting reform at national universities.

Having received this designation, we aim to become an institution that “drives social change with integrative knowledge,” and while promoting reforms to offer the highest level of research and education, we will continue to work toward realizing our vision of what it means to be a Designated National University Corporation. We ask for your continued support and cooperation in this endeavor.



Core Organizations for Realizing Our Vision

In order to realize the vision, the Comprehensive Research Strategy Council works to formulate the university's research strategy and uncover new strengths. Based on this strategy and with the goal of creating integrative knowledge, the Integrated

Initiative for Designing Future Society and the Data-Driven Innovation Initiative collaborate to solve social issues, and we have established systems that make use of the Open Innovation Platform to implement the results in society.

Integrated Initiative for Designing Future Society

In order to respond to social issues, which continue to increase in diversity and complexity, think tank units will work to design an ideal future society and then use a backcasting approach to identify strategic steps and measures needed to achieve that future in a manner that fuses and integrates knowledge in the natural sciences, humanities, and social sciences with a focus on the field of design. These think tank units will collaborate with the three research units addressing the university's three priority social issues (decarbonization, medicine and health, and

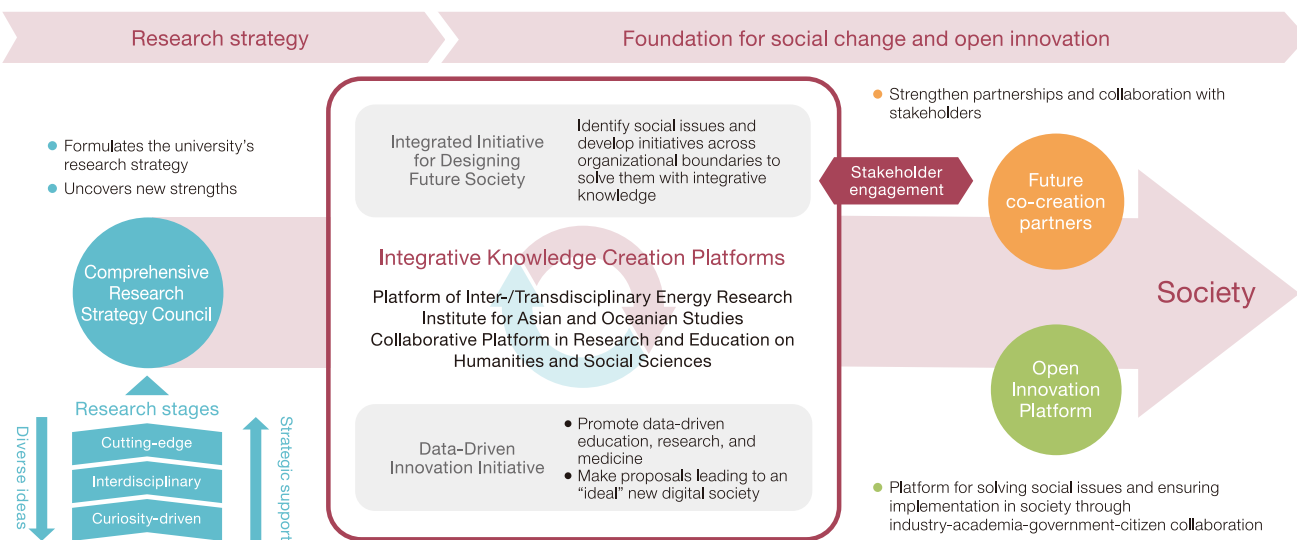
environment and food) to design resolution processes that lead to implementation in society, and the university will systematically promote the deployment and implementation of research results that contribute to the realization of that ideal future society. In addition, the partners with whom we are co-creating the future, which include a diverse range of university stakeholders, will also participate in accurately assessing the needs of society to design a future society that is truly ideal.

Data-Driven Innovation Initiative

By leveraging the university's strengths in advanced data-driven education and research activities, including learning analytics, advanced educational materials development, mathematical and data science, and cybersecurity, the Data-Driven Innovation Initiative will manage the university's digital transformation and promote university-wide data-driven education, research, and medicine by integrating a wide range of academic disciplines from the natural sciences to the humanities and social sciences. The Initiative will also work to link and integrate various types of data in cooperation with internal and external organizations, and promote research aimed at realizing new social models through digital transformation with the goal of solving social issues, creating new value for data in the process. It will construct a data governance system to oversee and support data management, while also training others to promote digital transformation.

Open Innovation Platform

The Open Innovation Platform works to plan and execute optimal strategies for resolving social issues and commercializing research findings by taking advantage of three functions: a future design function to explore real issues and formulate solution-oriented vision-making joint research projects by facilitating a free and open exchange of opinions through the formation of a venue where industry, academia, the government, and the public can come together; an issue-driven function to strengthen the commitment of businesses and universities, and promote research through institutional collaboration aimed at finding solutions to the issues faced by businesses; and a science-driven function to develop projects with the goal of commercializing research findings.



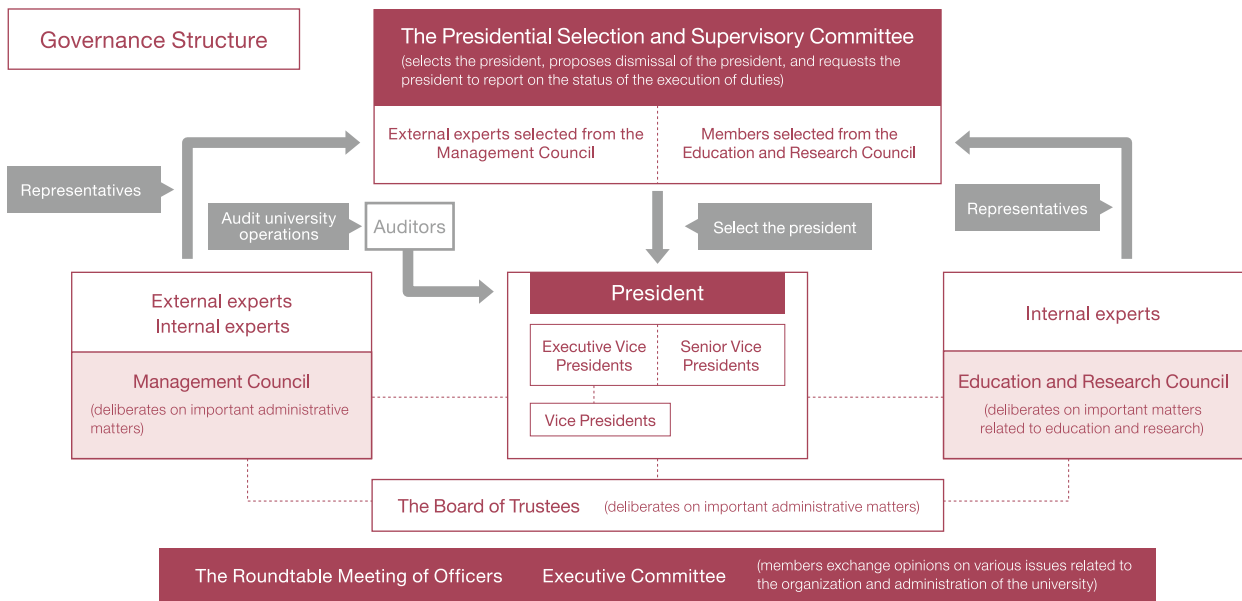
Under the leadership of the president, the university has clarified the roles and responsibilities of each organization and established appropriate decision-making processes.

Board Members, etc., of the University

- The president is selected by the Presidential Selection and Supervisory Committee and appointed by the Minister of Education, Culture, Sports, Science and Technology.
The president administers university affairs, supervises the staff, represents the university, and presides over its operations.
- Eight executive vice presidents assist the president and manage the operations of the university.
- Seventeen senior vice presidents (five of whom are also executive vice presidents) assist the president in administering university affairs in accordance with instructions from the president.
- Ten vice presidents assist the eight executive vice presidents in the performance of their duties.
- Two auditors are appointed by the Minister of Education, Culture, Sports, Science and Technology to audit the operations of the university.

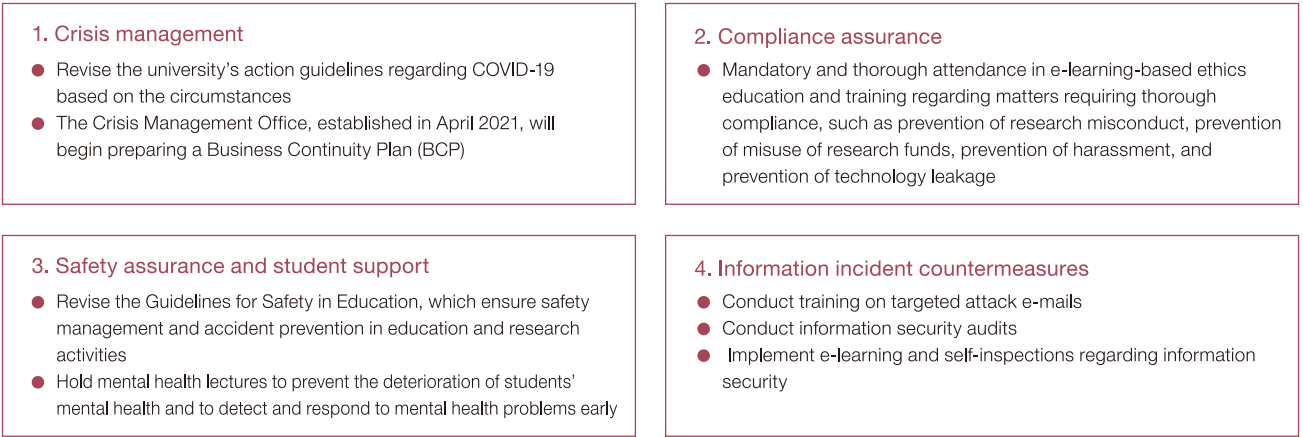
University Committees

- The Presidential Selection and Supervisory Committee has the authority to select the president, propose dismissal of the president, and request the president to report on the status of the execution of duties, and is composed of external experts selected by the Management Council and members selected by the Education and Research Council.
- The Board of Trustees deliberates on important matters related to the administration of the university, and is composed of the president and eight executive vice presidents, with an auditor also in attendance.
- The Management Council deliberates on important matters related to the administration of the university, and is composed of the president, five executive vice presidents appointed by the president, the director of Kyushu University Hospital, six department heads appointed by the president, and fifteen external experts. More than half of the members are from outside of the university to ensure that a broad range of societal opinions is reflected in the deliberations.
- The Education and Research Council deliberates on important matters related to education and research, and is composed of the president, executive vice presidents, senior vice presidents, and the heads of faculties, attached research institutes, and other organizations. The auditors and vice presidents also attend as observers.
- The Roundtable Meeting of Officers is a venue for the members to exchange opinions on various issues related to the organization and administration of the university. Meetings are attended by the president, executive vice presidents, auditors, and director of Kyushu University Hospital. When the senior vice presidents and vice presidents are added to a roundtable meeting, it is called the Executive Committee.

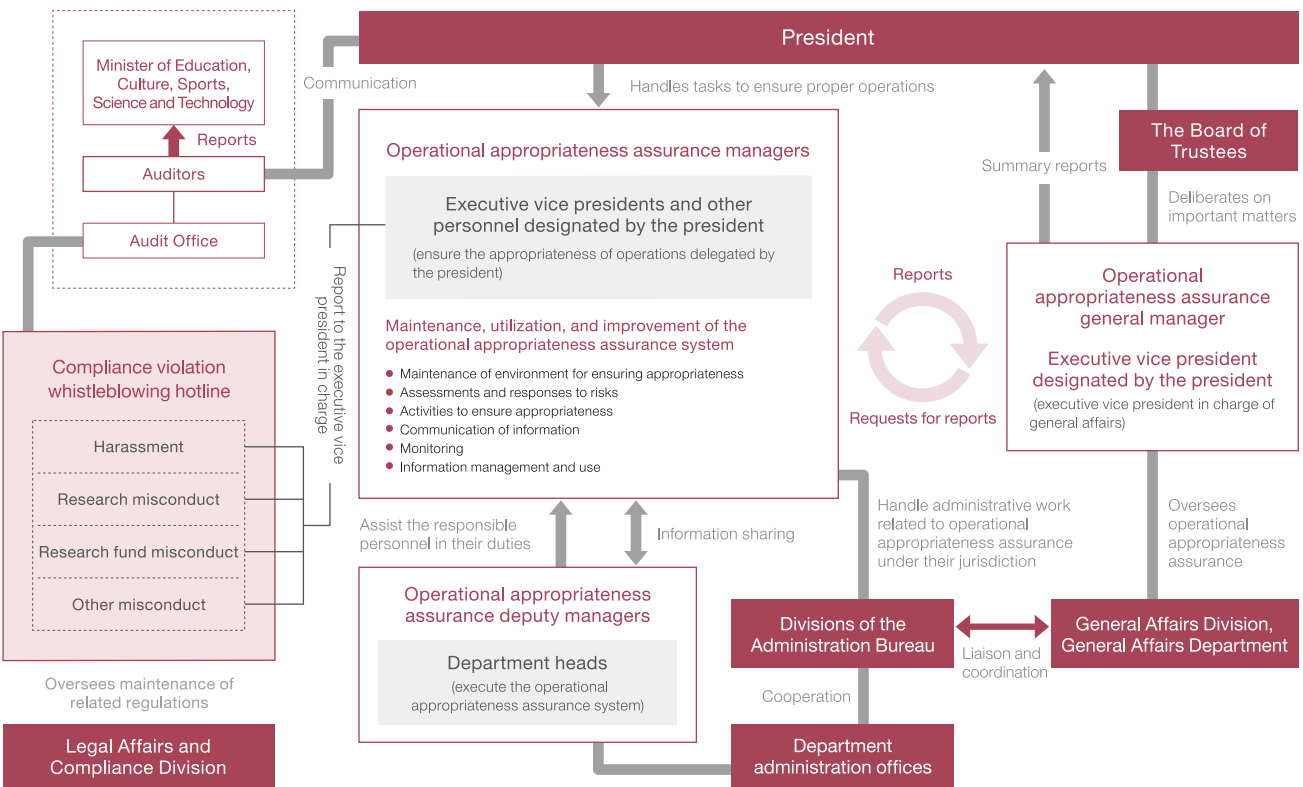


System to Ensure Proper Operations

- In accordance with the Act on General Rules for Incorporated Administrative Agencies, the university ensures appropriate administration by establishing and utilizing a system designed to ensure proper operations (operational appropriateness assurance system).
- Under the operational appropriateness assurance system, the executive vice presidents prepare manuals, assess and respond to risks, and conduct monitoring within the scope of the operations under their responsibility, and issue reports to the president on risks and measures to mitigate risks as well as the results of monitoring.
- The university has also established a compliance violation whistleblowing hotline to receive reports of violations of laws, regulations, and internal rules from both inside and outside the university.



System to Ensure Proper Operation of Kyushu University



Mid-Term Objectives and Plans

The incorporation of national universities in 2004 enabled autonomous administration based on each university's education and research mission and long-term vision, and also made it mandatory for each university to formulate its own mid-term objectives and plans.

While formulating and working to accomplish mid-term objectives and plans is a prerequisite for public investments in

national university corporations, these are also meaningful ways for members to share in the university's vision and to improve the quality of education and research through periodic inspections and evaluations (publication of achievement status), which lead to systematic, strategic university administration as well as rational and effective resource allocation in line with the degree of progress.

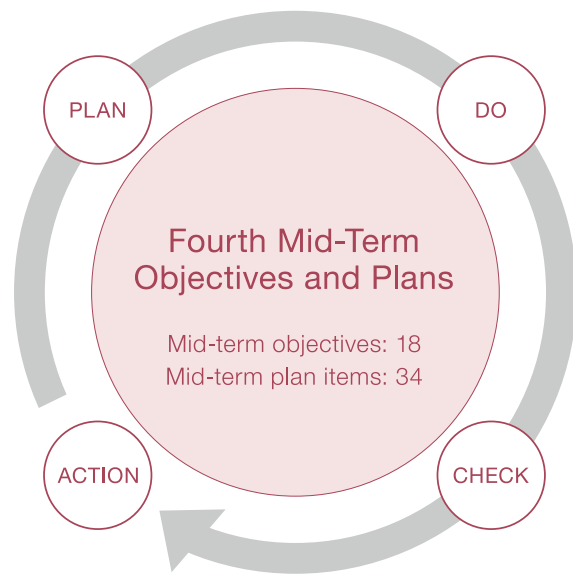
Kyushu University's Mid-Term Objectives and Plans

From the outline of the roles and functions required of national university corporations by the government, and based on the university's own vision (Kyushu University Vision 2030), the university has selected items that will produce significant change and distinction during the fourth period as mid-term objectives, and incorporated standards to achieve, measures to accomplish,

and verifiable indicators into the mid-term plans.

In addition, Kyushu University formulated these objectives and plans in light of the fact that it was selected as a Designated National University Corporation by the Minister of Education, Culture, Sports, Science and Technology in November 2021.

Vision: Driving social change with integrative knowledge



Designated National University Corporation Proposal
Kyushu University VISION 2030

Evaluation (publication of achievement status)

National university corporations are subject to evaluations on the degree of achievement of mid-term objectives for every six-year mid-term objective period by the National University Corporation Evaluation Committee established by the Ministry of Education, Culture, Sports, Science and Technology. The results

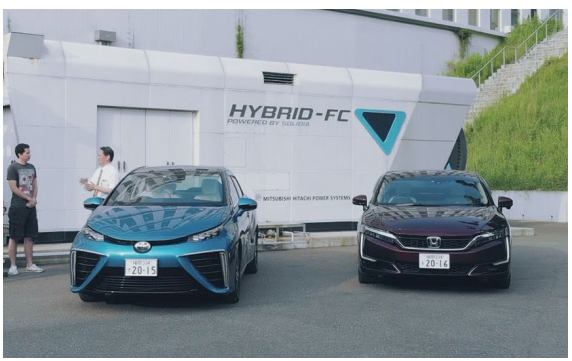
of these evaluations are published on the university's website.

In addition, Kyushu University conducts self-assessments every academic year to identify the degree of progress made toward accomplishing the university's Fourth Mid-Term Objectives and Plans, and publishes summaries on the official website.

Key Points of the Mid-Term Objectives and Plans

Co-Creation with Society / Research

- Focus support in the fields of “decarbonization,” “medicine and health,” and “environment and food,” and identify areas in which new research strengths can be created
- Make proposals for solutions to social issues and designs for future society through the creation and utilization of integrative knowledge by the Integrated Initiative for Designing Future Society
- Promote data-driven activities, promote research aimed at solving social issues through digital transformation, and secure and cultivate human resources competent in digital transformation
- Strengthen governance and management functions and systems in the area of research through the establishment of the Comprehensive Research Strategy Council
- Create large-scale projects through the establishment of the Open Innovation Platform
- Diversify career paths for early-career researchers, including support to enable early-career researchers to participate in collaborative research
- Promote diversity, equity, and inclusion



Education

- Promote the incorporation of problem-solving-oriented class subjects in all curricula
- Promote interdisciplinary degree programs
- Improve the treatment of doctoral students and provide career path support
- Accept excellent international students and send more students abroad



Operational administration

- Establish a robust governance structure by strengthening the president's decision-making support system
- Promote the acceptance of donations by constructing a fundraising system and reinforcing its functionality
- Establish a stable financial base by promoting diversification of financial resources
- Strategically allocate internal resources
- Disseminate information to stakeholders through attractive PR



Click here for details on Kyushu University's Fourth Mid-Term Objectives and Plans

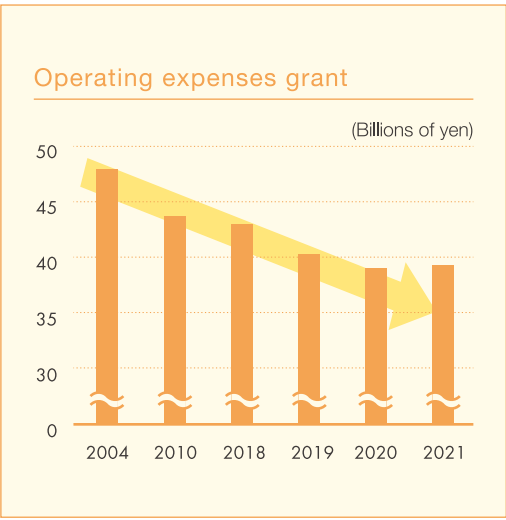
<https://www.kyushu-u.ac.jp/en/university/plan/chuki/>



Seeking sound management
while continuing to grow as a
global knowledge base

Improving the financial foundation that
underpins our business operations

Kyushu University receives an annual government grant for operating expenses that provides us with the financial underpinning needed for our business operations. After receiving a grant of 48.5 billion yen in FY2004 (our first year of incorporation), the university has had to contend with continually declining amounts over the years as the government struggles with a challenging financial situation. The figure had shrunk to 39.2 billion yen in FY2021. Creating a financial foundation that does not rely solely on our operating expenses grant is essential for the university's continued growth, so we are working on making effective use of university facilities and finding other methods to generate more income independently. We are also working on gaining funding from outside sources by proposing winning research topics leading to research contracts and subsidies



New ways of working with the public

Crowdfunding is a mechanism that lets project initiators achieve a particular ambition or vision by publicizing it online and receiving funding from like-minded supporters. Besides funding, the university has also used crowdfunding for benefits such as publicizing education and research activities, releasing information and raising public awareness. Fourteen crowdfunding projects have been done as of September 2022, raising about 51 million yen from supporters.

The university has also been promoting sales of naming rights to university facilities as a way to help recruit contracted corporate partners and improve corporate recognition. Software developer Sky Group was signed as a new partner in July 2022, receiving naming rights for Sky Cute.Commons and Sky Q-Bridge.



Kyushu University's crowdfunding website
https://readyfor.jp/lp/kyusyu_univ/index.html



▲ Commemorating the sale of naming rights (Sky Q-Bridge)
▲ Commemorating the sale of naming rights (Sky Cute.Commons)

Changing the World with Advanced Research

Promoting decarbonization

Offshore Wind Research and Education Center

The Offshore Wind Research and Education Center is a new facility created by the university on April 1, 2022. It aims to become a world-class offshore wind power research and education center by drawing on past achievements in offshore wind power research to bring together related research resources.

The center brings unique wind turbine and floating body technologies (hardware) together with wind condition analysis and fluid structure analysis technologies (software). By drawing on the benefits made possible by its ability to perform wind turbine development, it wants to become a national green innovation hub that will create groundbreaking technologies, make policy recommendations and help train manpower while innovating offshore wind power generation and other areas of wind energy technology.

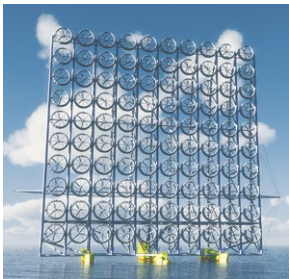
In August 2022, the center also became the core of an offshore wind power consortium created by bringing together power companies, local governments, manufacturers and other organizations representing the private sector, academia and government throughout Japan (41 organizations as of October 2022). This nationwide

multidisciplinary organization is aiming to promote the research and development of technologies related to offshore wind power generation and to help train manpower.

The university is eyeing the center and consortium launches as an opportunity to work on offshore wind power issues. We want to play an active role in the adoption of offshore wind power as a primary source of power in Japan, and in the decentralization of the country's energy sources.



▲ Ultra-large (20 MW) floating cluster lens wind turbine (rendering)



Kyushu University's main work on renewable energy

1 Harnessing the Earth's heat

Explicating geothermal systems; developing and using environmentally sound geothermal energy resources

The Department of Earth Resources Engineering in the Faculty of Engineering leads the university's research and education efforts on geothermal energy resources. The department has produced a large number of geothermal researchers and engineers working in Japan and throughout the world. It began offering Japan's only geothermal engineering course in 1974, and is home to a lab that sprung from the Geothermal Research Center, which was founded in 1982.



▲ Surveying for gravity variations in the area served by New Zealand's Ohaaki geothermal power station

2 Hydrogen research

Creating a clean energy society fueled by hydrogen energy

The university's hydrogen research focuses on fundamental hydrogen technology and materials research. It includes research partnerships between academia and the private sector that study areas such as fuel cells and hydrogen materials. Study findings are applied to field trials done at the Ito Campus and elsewhere in and around Fukuoka. The university is also active in training the future innovators who will create a decarbonized society, offering a curriculum that includes degree programs with hydrogen specializations.



▲ The university's fuel cell vehicles and Hydrogen Station

Work on medicine and health

Worldwide rise of ICT-based medical education and future outlook

Kyushu University created the Telemedicine Development Center of Asia (TEMDEC) in 2008 as a way to provide telemedicine education in various disciplines. It was created in partnership with healthcare providers in other countries by drawing on the internet's worldwide reach and the latest technology. TEMDEC has built robust partnerships with medical staff and engineers in a number of different countries since its launch, hosting international webinars and case review meetings. It has also provided medical staff around the world with resources such as videos of surgeries and endoscopies, giving them access to the cutting-edge medical knowledge and experience of experts in several disciplines of medicine while teaching them advanced medical techniques. The center also actively promotes telemedicine consultations from overseas.

While the COVID-19 pandemic drastically reduced global travel and direct interpersonal contact, it has created a renewed awareness of telemedicine's convenience and utility among people worldwide. The knowledge and experience the center has gained to date are being used to help the ongoing growth and spread of telemedicine as a way

to improve and equalize healthcare standards around the world.

As an institution containing undergraduate schools of medicine and design, the university is also drawing on its unique identity to develop educational programs integrating these two areas. Our aim is to raise healthcare quality through ongoing projects that bring these two areas together.



▲ Teleconference with participants from around South America

Work on the environment and food

Tracking decades of worldwide plastic environmental waste leakage Drifting into oceans, mostly unaccounted for on land

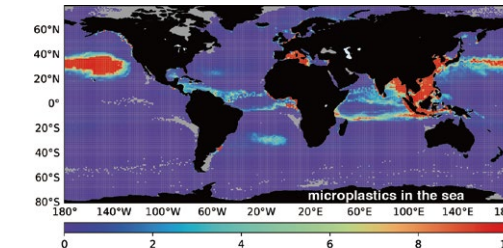
While plastic waste discarded into the environment disintegrates into minute pieces, it does not chemically decompose. So plastic may remain in nature for hundreds or thousands of years.

A team led by Professor Atsuhiko Isobe of the Research Institute for Applied Mechanics has developed a computer simulation that reproduces the movement of the plastic waste and microplastics that drift and wash ashore in the world's oceans. The simulation has successfully modeled the quantity of plastic waste washing ashore worldwide, and the quantity of microplastics drifting near sea level. The simulation has also been able to track what has happened to the plastic waste drifting into the sea from rivers and being discarded in the ocean for the past 60 years.

About 33% (8.4 million metric tons) of the plastic waste that has drifted into the world's oceans is still drifting and washing ashore repeatedly. The other roughly 67% (16.8 million metric tons) is thought to have already disappeared from coasts or depths near sea level by sinking to the ocean floor or other concealed areas. But the team found that the total plastic in the ocean only amounts to about 25

million metric tons, which is about 5% of the plastic estimated to have been discarded on land over the same 60 year period. So the roughly 95% remaining (about 500 million metric tons) seems to be on land in unknown locations.

Kyushu University is committed to assisting plastic reduction efforts by providing scientific corroboration through research.



▲ Worldwide microplastic quantities drifting in ocean surface layer as charted by simulation (weight per square kilometer)

Carsharing service field trial

Automotive holding company SEED Holdings has partnered with Toyota Rentalease Fukuoka and Toyota Motor Corporation to conduct a field trial designed to examine areas such as how the COVID-19 pandemic changed the way students view carsharing services, the demand for these services as a way to supplement public transport, and advanced ridesharing services.



▲ Carsharing service fleet

Shared electric scooter service field trial

Gas station operator Shin-Idemitsu is looking to create an environmentally friendly shared transport service by providing free electric rental scooters for transporting university students, faculty and staff between the Ito Campus and JR Kyudai-Gakkentoshi Station. A field trial was carried out to determine how effective this new transport service would be in supplementing public transport. The trial also gathered data on service requirements and travel history that would be useful for service design.

The findings and issues obtained from the field trial are being examined to study service feasibility.

Kyushu University is committed to hosting on-campus field trials, hoping to help solve a wide range of issues.



▲ Electric rental scooters for use with the service

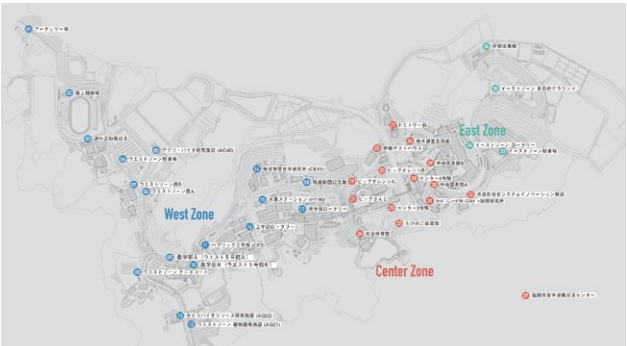
AI-driven on-demand campus bus service

An on-demand bus service driven by an AI route bus mechanism was launched in April 2019, the first such service to be put into full-scale operation in Japan. The service is an outgrowth of a smart mobility promotion consortium created in July 2016 by the university, the Fukuoka municipal government and private-sector companies such as telecom provider NTT Docomo.

The service is the first example of a full-scale real-world application since the university went public with its commitment to hosting on-campus field trials.

The AI on-demand campus buses used by the service are driven by an AI route bus mechanism developed by NTT Docomo. The mechanism automatically computes the most efficient vehicles and routes (ridesharing combinations) in response to requests to board or get off buses being generated in real time. The service lets users reserve rides from any location with a smartphone or web app, helping make campus transport more convenient by facilitating mobility throughout the extensive Ito Campus.

AI route buses look promising as a way to help solve the transport challenges facing communities throughout Japan.



▲ Bus route map (37 stops)



▲ AI-driven on-demand campus bus

Disused Hakozaiki Campus site

In July 2013, the university teamed with the Fukuoka municipal government to create a committee for discussing how best to use the site of the university's disused Hakozaiki Campus. Composed of academic experts, representatives of local resident groups and business leaders, the committee aims to ensure that the site receives the benefits of organized urban development and smooth handling. A set of urban development guidelines known as the Hakozaiki Campus Grand Design was created in July 2018, and field trials of cutting-edge technologies are being done in collaboration with the Fukuoka municipal government and other project member organizations. These trials are being done to prepare for the Hakozaiki adoption of Fukuoka Smart East, an advanced urban development scheme led by the Fukuoka municipal government.

The project aims to produce well-received urban development through these efforts, and is making plans to start recruiting land users while carefully monitoring for rises in COVID-19 cases.

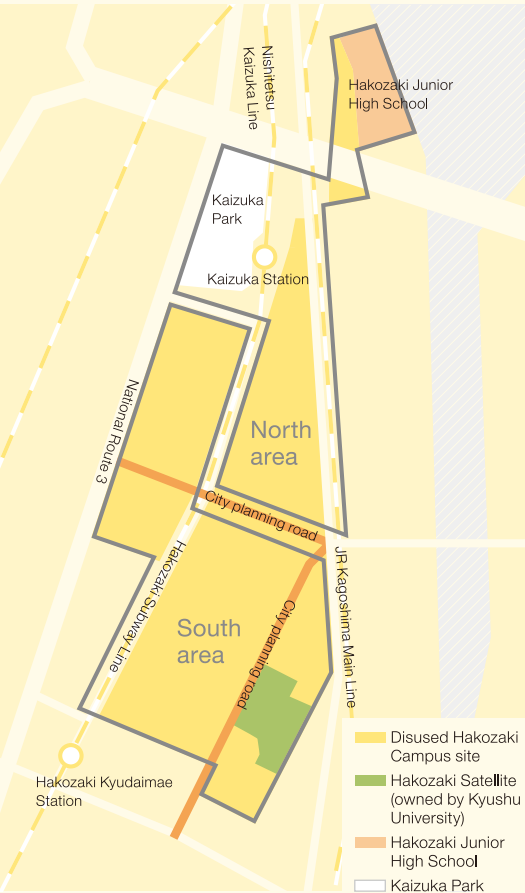
The university will continue to own some of the modern structures on the Hakozaiki Campus (such as the Old Faculty of Engineering Main Building and Headquarters Building 1), which will be repurposed for use as the Hakozaiki Satellite.



▲ Electric rental scooters for use with the service

Project plan

Scope of urban infrastructure development



Urban development project done by Kyushu University in collaboration with other project member organizations

North area (about 20 hectares)

Land reallocation project led by Fukuoka municipal government

- Eliminating debilitated urban infrastructure around and nearby Kaizuka Station; enhancing general transport hub functions (providing a station plaza, improving east-west connectivity and other work)
- Relocating public facilities such as Kaizuka Park and Hakozaiki Junior High School; using the vacated sites
- Project led by municipal government due to extensive amount of city-owned land and public facilities

South area (about 30 hectares)

Development work done through Urban Renaissance Agency (UR)

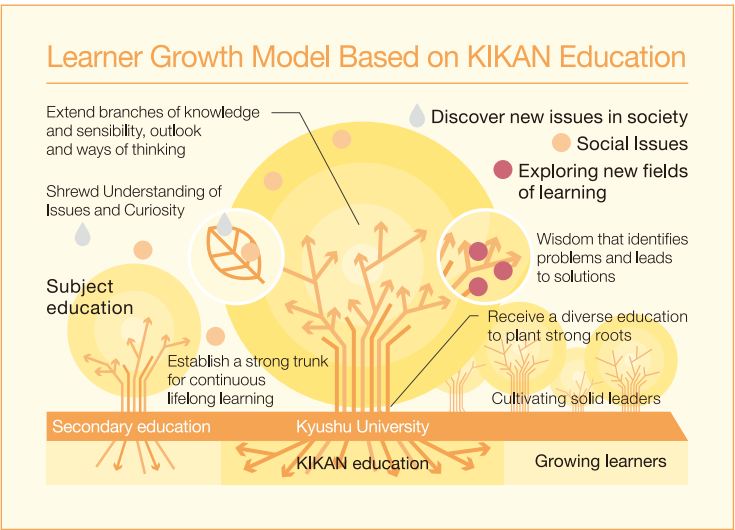
- UR is a contractor capable of rapid urban infrastructure development. It was selected by Kyushu University to ensure that funding could be secured rapidly and land handled properly.
- The Fukuoka municipal government is using a program that lets UR act on behalf of local government agencies to develop city planning roads and other public facilities.

To Students, Aspiring Students, and Parents

Helping ensure every student gets the most from the university

Training students to learn on their own

The university provides courses in KIKAN education (core undergraduate curriculum) designed to produce active learners who will be able to continue learning on their own for the rest of their lives. These courses combine humanities and science curricula, with examples including KIKAN education seminars and “Kadai-Kyogaku” (interdisciplinary collaborative learning of social issues). The classwork is designed to make students better at exchanging and applying a wide range of knowledge gained from people of different viewpoints, opinions or values. It helps give them the sensitivity needed to accept each other’s differences and the communication ability needed to solve problems. Through self-evaluations done with peers from other undergraduate schools, students learn proactive study methods that give them a solid grasp of the core skills needed for lifelong learning.



Financial assistance for worry-free education

The university has a program that waives admission and tuition fees for students recognized as academically outstanding, when paying tuition and other fees would be financially difficult. We have also created a number of our own programs to actively promote financial assistance for students. For example, the Yamakawa Prize and Grant is available for undergraduate students with outstanding ambitions and academic records, and no tuition fees are charged for exchange students studying under overseas study agreements. The Hiroo Nakamoto Prize is another form of financial assistance. Made possible by a donation from Hiroo Nakamoto (founder of a Fukuoka printing company), it provides scholarships to high school students with outstanding academic records who would have financial difficulty paying tuition. Candidates are selected before admission. Once enrolled, they can focus on their coursework without having to worry about scholarship repayment or devoting excessive time to part-time jobs. The university will continue to be an active proponent of financial assistance for students. (See related information on p. 56.)

Major forms of financial assistance provided by the university itself

- Tuition and admission fees waivers
- Graduate student stipends for teaching assistance work
- Yamakawa Prize and Grant, Hiroo Nakamoto Prize
- Tuition waivers for exchange students studying under overseas study agreements
- Doctoral candidate stipends for research assistance projects
- Scholarships for outstanding students in bachelor degree programs (international courses)

Research support for doctoral candidates

In addition to the financial and career assistance provided independently by the university through programs such as our scholarship program for graduate school research assistance, other forms of financial assistance are also available. For example, government-subsidized programs are available such as the Doctoral Program for World-leading Innovative & Smart Education, the University Fellowship Program for the Creation of Innovation in Science and Technology, and Support for Pioneering Research Initiated by the Next Generation. These programs provide benefits such as financial assistance for doctoral candidates, and internships made possible through corporate partnerships. They create environments that let students focus on research without having to worry about living expenses or research fees, while helping them find a career path after graduation.



▲ Students taking a workshop at the Graduate School of Mathematics for Innovation

Assisting inclusion

To guarantee equal study and job opportunities for the disabled (and sufferers of chronic and serious illnesses), the university provides reasonable and individually tailored accommodations to remove social barriers. These accommodations are provided in three areas—the physical environment, communication, and flexible changes to rules and practices. To help produce the manpower needed for an inclusive world, we also provide a training program for accessibility leaders and train peer supporters working as support staff within the university. Peer supporters work to improve on-campus accessibility in various ways by leading support, awareness-raising and training activities. For example, one of these support activities is a PC note-taking service provided to ensure that information reaches students with impairments in speech perception or interpretation. The service converts spoken-word information into text during classes and events such as entrance and graduation ceremonies.

The service began being offered remotely when classes were moved online during the 2020 school year to prevent COVID-19 transmission. Assistance activities were provided from peer supporters’ residences and other locations.



▲ Campus map of Kyushu University designed to accommodate diversity in color vision perception


Kyushu University's apps and social media-based service

Campus congestion display system


itocon

The itocon campus congestion display system shows real-time congestion levels at eleven transport access points (Kyudai-Gakkentoshi Station and the Ito Campus bus stops) and nine Ito Campus dining facilities. It helps student, faculty and staff commuters to the Ito Campus avoid congested areas more easily.

Itocon updates station and bus stop congestion information every minute, and can also display congestion levels for previous bus departure times. Forecasts of future congestion levels at Kyudai-Gakkentoshi Station are now also possible thanks to an upgrade added on March 26, 2021.




Developers: HumanoPhilic Systems Laboratory (headed by Professor Yutaka Arakawa) in Kyushu University's Faculty of Information Science and Electrical Engineering, and the Kyushu University Center of Coevolutionary Research for Sustainable Communities (COL)




Student mental health assistant smartphone app

Q-Mental App

Q-Mental App is a student mental health assistant smartphone app. It has a recording function that records daily exercise, appetite, sleep time and mood, a screener function that can screen for mental illnesses, a personal chart function that comments on the findings of the recording function, and a consultation function that provides contact information showing where students can get real-world help with mental health problems. Although Q-Mental App was created for Kyushu University students, it can be installed by anyone. The contact information shown by the consultation function can be customized to enable use tailored to other universities.



Developer: Associate Professor Kosuke Kajitani of Kyushu University's Center for Health Sciences and Counseling



Social media-based AI concierge system

SupportQ

An AI concierge system named "KyudaiGakumu LINE" was previously available in a beta trial version on the social media app Line. In March 2022, the system was upgraded to provide a greater range of support for the university's students, faculty and staff. It now has information on tuition fee waivers, admission fee waivers, scholarship programs and housing application procedures, along with information on PC settings for new students, online classes and study aid systems. The system was officially released in June 2022, renamed "SupportQ" in recognition of its enhanced support. SupportQ will continue being upgraded to provide a growing range of concierge functions to university students as well as faculty and staff.



Inquiries: General Affairs Section of the Student Affairs Planning Division, Student Affairs Department
TEL.: 092-802-5925
Email: gagsomu@jimu.kyushu-u.ac.jp

Student Safety and Security Plan With & Beyond COVID-19

Kyushu University has formulated the "Student Safety and Security Plan With & Beyond COVID-19" to ensure a worry-free learning experience for our students. The university will continue to provide new ways to secure learning opportunities while ensuring infection

prevention. We are committed to maintaining excellence and the highest standards through a hybrid approach of distance learning and in-person classes on the assumption that some students may not be able to come to campus due to COVID-19 related issues.

Infection protection measures


- Conscientious social distancing
Measures such as upgrading the campus congestion display system designed to let students, faculty and staff avoid congestion on school buses and other areas while commuting
- Disinfection, sanitization and antivirus measures
Measures such as installing antivirus filters and ventilation circulators in lecture hall air conditioning equipment
- Installation of thermography scanners
Measures such as installing thermography scanners in libraries, dormitories and other student gathering points

Educational environment enhancements

- ICT-based learning assistance
Measures such as providing online classes using the M2B (Mitsuba) learning assistance system developed by the university, and promoting learning assistance using the educational big data gathered by the system
- Intercultural education inside Japan
Development of an educational model in collaboration with Ritsumeikan Asia Pacific University that supplements overseas experience with intercultural learning right here in Japan

Student support enhancements

- Releasing an AI-based student concierge system
Creating an AI-based system that improves student convenience by providing round-the-clock responses to online inquiries from off-campus
- English proficiency test incentive program
Helping motivated students to improve their language skills and study overseas (covering test fees for IELTS and TOEFL iBT)
- Student career and job assistance
Measures such as flexible accommodations for career and job advice provided online or in-person
- Student health & wellbeing
Measures such as accommodating new consultations online
- Financial assistance for international students
Covering part of the lodging expenses incurred immediately after arrival in Japan by international students enrolled at their own expense for the 2020 and 2021 school years



▲ An instructor giving an online class

Central Library promotes learning

Opened in October 2018, the university's Central Library is one of the largest university libraries in Japan. It has an area of 20,000 square meters, approximately 1,400 seats, and enough capacity to house a 3.5 million volume collection (with 1.5 million volumes housed in automatic stacks). This extensive collection gives students the abundant resources needed to enhance their studies and knowledge. The library's wide range of user spaces can accommodate a number of different student learning styles. For example, Sky Cute.Commons is an active learning space designed to enable study in lively discussion groups. Movable chairs, whiteboards and other fixtures are available to aid study activities, helping students learn in self-directed ways. The library proactively assists student learning. Along with places to study, it also provides workshops on writing reports and a number of other topics, while a study advice desk manned by library teaching assistants (known as Cuters) provides students with study-related answers and advice.



▲ The library's large atrium space covers four floors



▲ The spacious Sky Cute.Commons learning space has areas for workshops, group study and a number of other functions spread out over 1,000 square meters.



▲ The study advice desk ensures that answers to student study questions are readily available. *COVID-19 transmission protection measures are applied.

To Hospital Users and Medical Professionals

Helping the healthcare sector grow while satisfying patients and medical staff



Kyushu University Hospital has a capacity of over 1,400 beds, making it one of the largest national university hospitals in Japan. Founded roughly 120 years ago, it leads Japan's university hospitals in inpatient and outpatient counts, numbers of surgeries (including high-complexity procedures and organ transplants), and other treatment statistics. It has also distinguished itself in areas such as clinical research and internationalization efforts.

The recent spate of medical crises brought on by natural disasters and the COVID-19 pandemic have seen the hospital focusing on local healthcare partnerships while growing into its role as the last bastion of local healthcare.

The hospital provides cutting-edge healthcare made possible by an extensive lineup of advanced functions that have brought it accreditation as a core clinical research hospital and a core genome-based cancer center and treatment facility. It has also

been working on enhancing medical safety mechanisms to ensure that patients enjoy a worry-free cutting-edge healthcare environment.

Educating healthcare staff is of crucial importance for the hospital. Its training programs are designed to produce healthcare staff who have mastered both holistic treatment approaches and medical safety. The Telemedicine Development Center of Asia draws on the hospital's resources to provide ICT-based international education.

The hospital will continue to work on producing superior and highly motivated healthcare staff, focusing on creating cutting-edge treatment methodologies while providing high-quality healthcare. Its goal is to provide healthcare of the highest standard designed to satisfy expectations and earn trust across the board.

Mission & Policies

Helping the healthcare sector grow while satisfying patients and medical staff

1. Provision of advanced medical care and promotion of research and development

2. Pursuit of greater medical safety

3. Contribute to community healthcare

4. Promotion of globalization based on information technology

5. Cultivate medical professionals who practice holistic medicine

Translational research assistance organization certification

Kyushu University was certified by the Minister of Education, Culture, Sports, Science and Technology as one of Japan's 11 supporting centers for translational research on December 20, 2021. The university has also been certified by the Minister of Health, Labour and Welfare as a core clinical research hospital under the Medical Care Act, and as a medical R&D center for both translational research and clinical research.

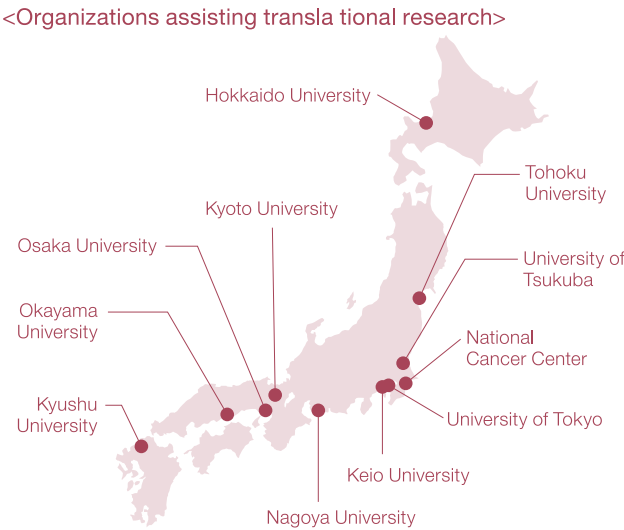
The ARO Next-Generation Medical Center at Kyushu University Hospital seamlessly assists the release of medical and pharmaceutical products and equipment. The center's wide range of activities starts with seed discovery and development (seeds are medical innovations that could potentially lead to new treatments). The center works with seeds owned by universities and research organizations, whether affiliated with the university or not. It also patents research findings, handles drug regulatory compliance, and conducts clinical trials and studies designed to ensure safety and reliability.

In 2013, Kyushu University led the creation of the West Japan Academia Translational Research Network (WAT-NeW), an organization composed of 25 universities located throughout Western Japan from Kansai to Okinawa. Having recently been certified, the university is now looking to use WAT-NeW as a way to improve and continue the work done to date. We want to improve seed discovery and development, provide more assistance for corporate partnerships, and invigorate translational research throughout Japan by using our own educational

programs to train R&D support workers. We are also working with partners such as international medical departments to expand internationally.

The university will continue working on translational research to rapidly bring the outstanding research results of universities and other organizations to patients in the form of innovative medical and pharmaceutical products and equipment.

*Translational research denotes research done to translate basic study findings into work on practical applications at clinical sites.



About the University	University's Vision for the future	To the Public	To Students, Aspiring Students, and Parents	To Hospital Users and Medical Professionals	To the Community	To Businesses and Researchers	To Alumni	Financial Status, etc.
----------------------	------------------------------------	---------------	---	---	------------------	-------------------------------	-----------	------------------------

Relocation and expansion of Admission, Discharge & Perioperative Support Center

Kyushu University Hospital's Admission, Discharge & Perioperative Support Center was created to ensure worry-free hospital stays, surgery, treatment and examinations by providing patient support starting before patients are admitted. To augment the support provided by the center, it was upgraded and relocated to the side of the hospital's main entrance in August 2021. In addition to the upgrade that has consolidated center functions, the relocation on the ground-level provides a one-stop gateway for a comprehensive range of services from outpatient to admissions needs to improve patient convenience.

The center has a staff of professionals that includes anesthesiologists, hospital department physicians, nurses, dentists, dental hygienists, pharmacists, physical therapists, rehabilitation professionals, registered dietitians and clerical workers. These professionals work as a team to identify the patient's condition and any problems that could arise with treatment from a multidisciplinary perspective. Patients are examined to ensure optimum condition during treatment, with any issues being resolved before admission whenever possible.

The pre-admission description and condition for treatment are shared with the ward and administrative office along with the medical history and background information obtained from the patient's medical interview. The center's social workers also get

involved to provide support designed to ensure that the patient's life transitions smoothly before, during and after the hospital stay.

The center's pre-admission support work includes checking the patient's medications, providing nutritional guidance and helping with oral care before surgery. This support is designed to speed recovery while making treatment safer and more effective. After discharge, support is provided to help the patient leave the hospital smoothly and resume everyday life.

The support provided by the center has been well received by patients and their families. While the support provided by the center was previously mostly for surgical department patients, it was expanded to include internal medicine department patients in September 2022 as a way to augment patient services throughout the hospital. Looking to make support available for patients in every hospital department by the end of the fiscal year, the center is now working with the related departments to expand its operations.



Beppu Hospital redevelopment project

A traditional anzen kigansai ceremony was held to pray for the safe construction of a new hospital on Thursday, August 11, 2022. The stately Shinto ritual was observed by 19 attendants. Representing the university were President Tatsuro Ishibashi, Senior Vice President Koichi Akashi, Executive Vice President and Secretary-General Norifumi Nishida, and Kyushu University Hospital Director Masafumi Nakamura. Beppu Hospital was represented by its Director, Takahiko Horiuchi.

The Beppu Hospital redevelopment project is focused on patient services. One aim is to provide healing spaces offering views of Beppu Bay from patient rooms and dayrooms.

The new hospital will continue to provide

treatment tailored to its unique strengths and characteristics. It will also provide advanced healthcare designed to meet local needs by adding a new department of gynecology and augmenting the functions it provides as a satellite facility of Kyushu University Hospital. Beppu Hospital will use its enhanced satellite functions to provide young doctors a venue for gaining a wide range of clinical experience and train doctors in regional and general healthcare, bringing greater benefit to the region.

The new hospital will have three floors and a total area of about 9,300 square meters. It is scheduled for completion by the end of November 2023.



▲ President Ishibashi reaping a rice stalk at the traditional Japanese groundbreaking ceremony



▲ Rendering showing the Beppu Hospital after redevelopment

● Facility development plan (roadmap)



Profit and loss statement (hospital segment)

(Millions of yen; decimals rounded off)

Item	FY2020	FY2021	Gain (loss)
■ Ordinary expenses	57,586	62,151	4,565
Business expenses	57,138	61,528	4,390
Education expenses	15	15	0
Research expenses	772	836	64
Treatment expenses	35,008	38,864	3,856
Outsourced research and related expenses	690	824	134
Outsourced project expenses	230	213	(17)
Labor costs	20,421	20,775	354
General and administrative expenses	312	494	182
Other	136	129	(7)
■ Ordinary income	59,237	64,823	5,586
Operating expenses grant income	4,049	4,471	422
University Hospital income	50,059	54,357	4,298
Outsourced research and related income	1,082	1,182	100
Outsourced project and related income	236	217	(19)
Donation income	254	285	31
Income from subsidies and other financial assistance	2,906	3,492	586
Facility expense income	0	81	81
Reversal of liabilities in return for assets	271	344	73
Other	376	389	13
(Ordinary profits and losses)	1,651	2,671	1,020
■ Extraordinary losses	1	11	10
■ Extraordinary profits	13	137	124
(Extraordinary profits and losses)	11	126	115
■ Net income	1,662	2,798	1,136
Withdrawal from special-purpose reserves	0	0	0
■ Gross profit	1,662	2,798	1,136

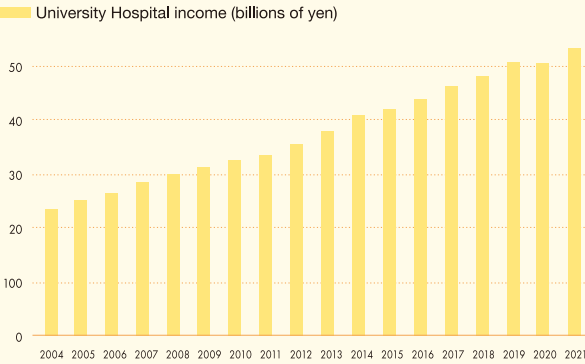
*Table figures do not always match the totals since decimal portions are rounded off.

[FY2021 Overview]

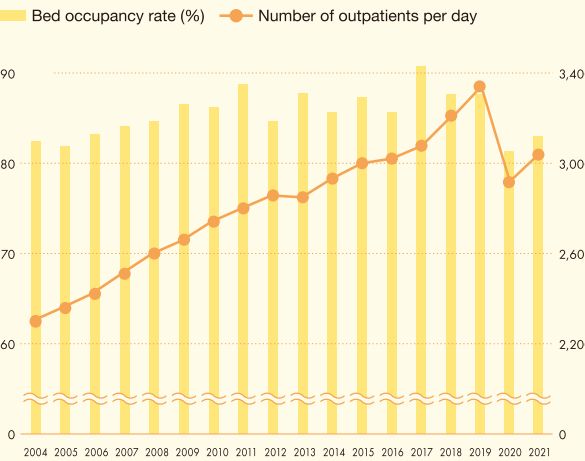
The previous year's conscientious measures to prevent COVID-19 transmission continued while efforts were made to provide advanced healthcare. As a result, the University Hospital's earnings significantly surpassed the previous year's.

But a turnaround in declining business conditions was not possible due in part to high healthcare expenses needed for augmented measures in areas such as transmission control and testing systems. The hospital was able to continue running on subsidies and other forms of financial assistance.

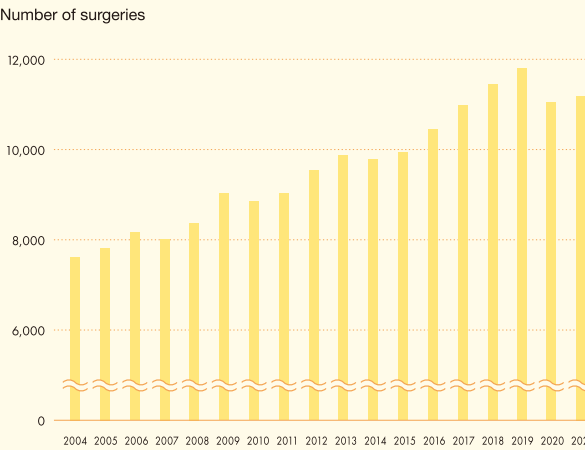
University Hospital income



Bed occupancy rate, number of outpatients per day



Number of surgeries



Kyushu University Hospital's work on COVID-19

- 1

To be involved in the treatment of COVID-19 in the Fukuoka region and help reduce transmission directly
- 2

To maintain the functions the hospital needs for providing high-level, sophisticated healthcare designed to treat a wide range of serious illnesses; to ensure that the hospital always lives up to its role as the last bastion for conventional medicine

Recognizing the importance of these missions, the hospital's staff has been working as a team to combat COVID-19. Handling a large number of admissions for conditions ranging from minor ailments to serious illness, the hospital has made a significant contribution to maintaining the integrity of Fukuoka Prefecture's COVID-19 treatment programs.

Primary activities

Providing new beds for COVID-19 patients

The hospital has provided dozens of special beds for COVID-19 patients in a properly zoned building isolated from the general treatment buildings. The patient admission system has been updated, adding more beds as needed to handle the rising case count and severely ill patient count. A medical team based at the Emergency & Critical Care Center has also been provided to administer treatments properly tailored to each patient's condition.

Measures to prevent hospital-acquired infections

- Adding more PCR test equipment to augment the testing program; administering pre-admission PCR tests, pre-surgery PCR tests and antigen tests
- Creating a fever-screening outpatient clinic; consolidating treatment locations for febrile patients
- Using thermography scanners to monitor body temperature when visitors arrive at entrances of outpatient buildings and other facilities

Sending staff to local healthcare providers and government agencies

- Assisting local healthcare by sending doctors to designated infectious disease healthcare providers
- Five nurses with ICU experience were sent to Osaka Prefecture from April to May 2021 in response to a government request. A rising number of cases had been putting the programs of Osaka's healthcare providers under strain.
- Nurses certified in infection control were sent to residential treatment facilities for non-severe cases in the prefecture. JMAT (Japan Medical Association Team) staff were provided with guidance on the use of

Providing simulator equipment for infectious disease staff training

Even during the COVID-19 pandemic, the hospital has continued to provide e-learning and simulator equipment to offer a stable source of practical learning opportunities essential for training healthcare staff. The equipment provides a set of practical learning tools not only to the hospital's doctors, nurses, and healthcare workers, as well as students of Kyushu University, but also to other students and healthcare staff in the region. It offers practical learning experiences designed for treating infectious diseases.

Helping prevent COVID-19 infection at Fukuoka municipal schools

In July 2020, the hospital's Center for Global Infectious Diseases began responding to inquiries directly from schools by providing advice on how municipal schools can protect themselves from COVID-19 infection. The center provides direct rapid assistance to schools, offering expert medical and epidemiological advice on routine infection prevention measures and the steps to take when cases are discovered.

The hospital has been asking users to comply with COVID-19 infection control measures such as wearing a mask when entering the hospital, conscientious hand sanitation and limiting visits to hospital patients. We would like to express our heartfelt appreciation for the generous understanding and support our users have shown in complying with these measures. They have enabled us to continue the healthcare programs we provide as an advanced treatment hospital. The hospital will continue working to help bring assurance to the lives of community residents, fulfilling our pivotal role as a local healthcare provider of cutting-edge medical services.

Staff clad in protective equipment transporting a COVID-19 patient into the hospital ▶



Kyushu University as a Partner To the Community

Fujii Gallery idea space

Fujii Gallery is the university's first full-sized gallery. It was completed in October 2020 thanks to a donation from university alumnus Tokuo Fujii (director, founder and chair of egg product producer Ifuji Sangyo Co., Ltd.). While the gallery's official public opening had to be postponed due to a rise in COVID-19 cases after construction, it was opened to the general public with a grand opening ceremony held on Wednesday, May 11, 2022.

The gallery is designed to be an idea space that provides inspiration and fosters creativity. By hosting and assisting exhibitions, workshops and media exposure projects, the gallery will work to foster integrative knowledge by providing a venue for exchanges between university members and outsiders, and exchanges across different disciplines.



▲ Attendees of the grand opening ceremony

Ito Clinic provides healthcare to members of the community

Opened in February 2019, the Ito Clinic is a readily available healthcare provider offering easy access to health consultations for Ito Campus-based students, faculty, staff and local residents. The clinic's general medicine department handles everyday acute illnesses such as colds, stomachaches and diarrhea, along with lifestyle-related conditions such as high blood pressure, diabetes, high cholesterol and high uric acid. The psychiatry department handles stress-induced mental and physical disorders.

The clinic's holistic approach to healthcare goes beyond just treating physical symptoms or providing internal exams. It also looks at the psychological and lifestyle background of sick patients, emphasizing effective patient communication.

The clinic can also provide appropriate healthcare guidance as needed, such as through referrals to Kyushu University Hospital or off-campus healthcare providers.



▲ Ito Clinic

The Ito Clinic provides influenza, pneumococcal, rubella and COVID-19 vaccinations.

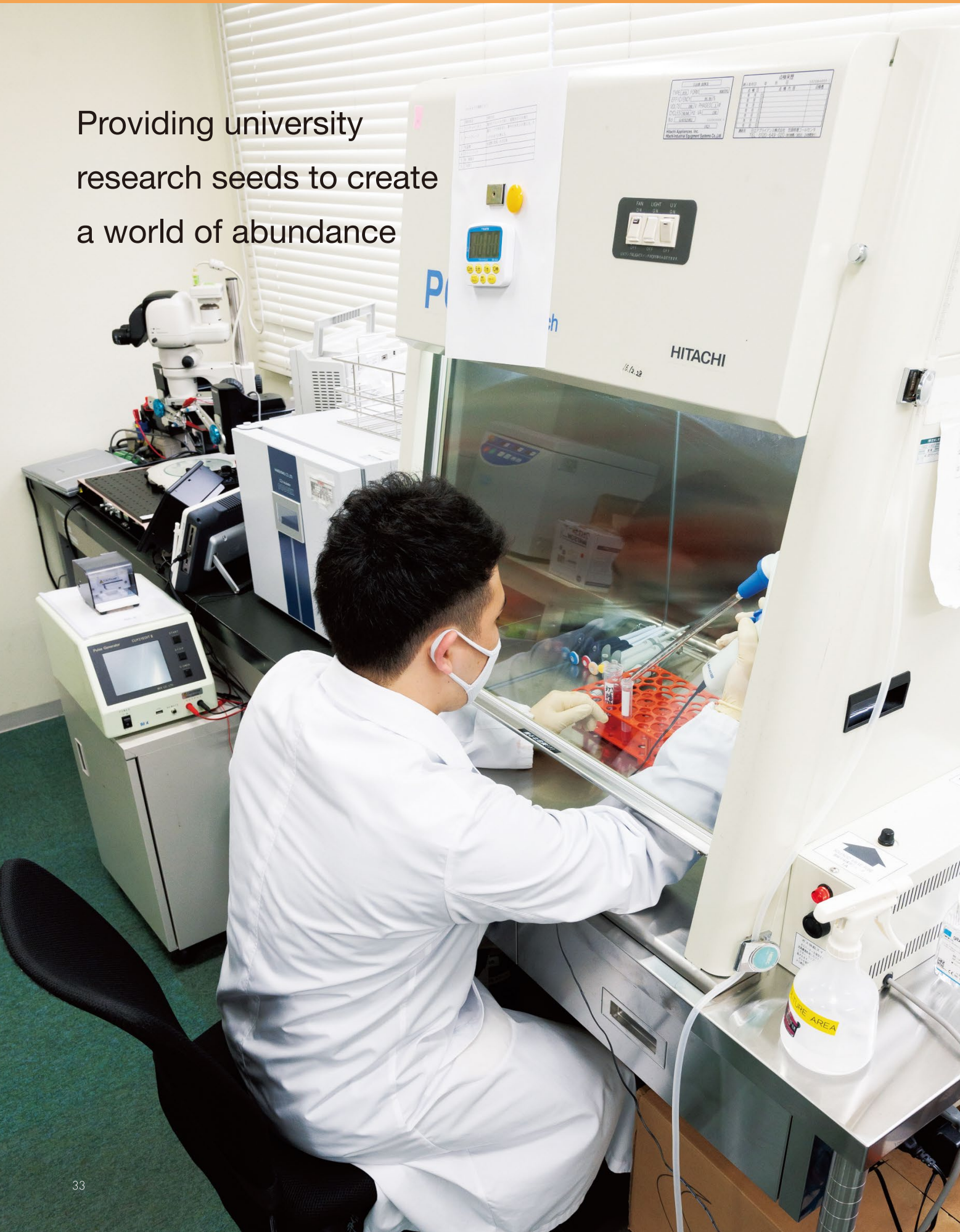
Reservation required

- Influenza, pneumococcal and rubella vaccinations
092-802-6580
- URL for COVID-19 vaccination information (Fukuoka municipal government website for making reservations)
<https://www.city.fukuoka.lg.jp/hofuku/coronavaccine/health/yoyaku.html>

About the University	University's Vision for the Future	To the Public	To Students, Aspiring Students, and Parents	To Hospital Users and Medical Professionals	To the Community	To Businesses and Researchers	To Alumni	Financial Status, etc.
----------------------	------------------------------------	---------------	---	---	------------------	-------------------------------	-----------	------------------------

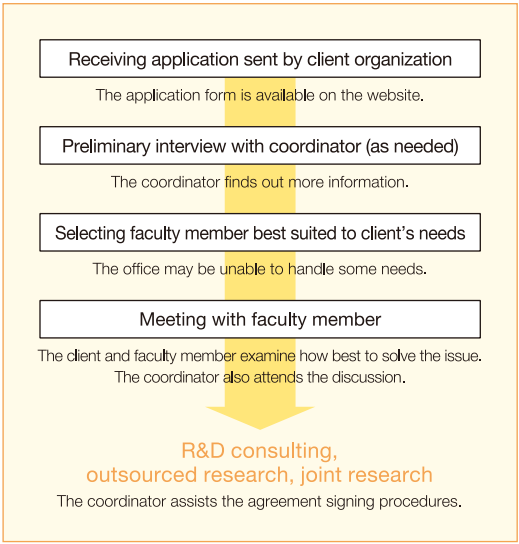
To Businesses and Researchers

Providing university
research seeds to create
a world of abundance



Helping organizations solve their technology development issues

The university's Academic Research and Industrial Collaboration Management Office has a help desk available full-time to respond to inquiries about technical issues from companies and other outside organizations. The office responded to 133 inquiries in FY2021. The office's staff of specialists handle inquiries by hearing each case in detail, providing a referral to the researcher best suited to solve the issue, and suggesting the optimum course of action (such as outsourced research, joint research or a referral to another organization). The office also started providing an R&D consulting program in FY2020 to satisfy the wide range of needs recently emerging from the industrial sector. In addition to providing the technical assessments, technical knowledge, research advice and research guidance the office has always offered, the program can also meet needs in areas such as advanced technical investigations and preliminary studies for joint research projects. Inquiries are always welcome.

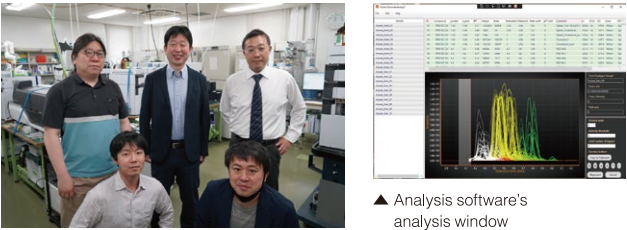


Assisting startups originating from the university

Beforce: A startup launched from Kyushu University

Beforce is a company created to provide real-world applications of technologies developed at Kyushu University. Using quantitative metabolome analysis for applications such as biomarker and drug discovery seed searches, it creates and provides solutions designed to provide health benefits and aid disease discovery and treatment. The technologies it works with are a software application with a metabolomics analysis algorithm (developed with funding from the 3rd Kyushu University Gap Fund program), and two systems completed as projects under the Japan Science and Technology Agency (JST) START program—a system able to freely generate large volumes of target compound measurement transitions, and a system able to analyze complex data with high speed and precision. Metabolism is a set of genomic information execution results that should make significant strides in explicating a wide range of biophenomena and innovate technology in a number of different industries and academic disciplines by drawing on the characteristics of metabolomic high-resolution molecular phenotypes.

Beforce is working on explicating this wide range of biophenomena using systems that help generate large volumes of measurement transitions and analyze complex data. The company will also promote growth throughout the industry by supplying it with these systems and dramatically reducing researcher workloads.



Kyushu University Gap Fund Program

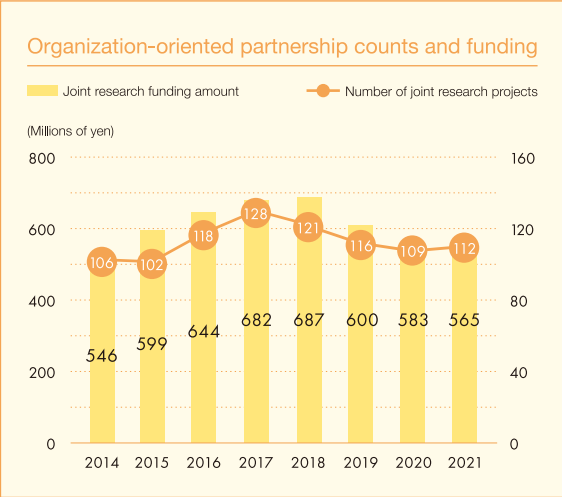
Now in its sixth term, the Kyushu University Gap Fund is an original program created by the university and offered since FY2017. The fund has been used by 42 faculty members over its first five terms to commercialize and validate projects, leading to the creation of 17 companies. The university also works proactively to commercialize business seeds through activities such as acquiring funds from outside sources and partnering with businesses and financial institutions.



▲ Gap Fund review meeting

Organization-to-organization partnerships bringing together industry, academia and government

Besides creating solutions for the R&D needs of individual companies, the university also creates original concepts while working to combine elemental research topics. We help form organization-oriented partnerships designed to let industry and academia collaborate on developing practical cutting-edge technologies with superior international competitiveness. Organization-oriented partnerships are created by signing agreements with companies after extensively screening candidates throughout the university to select the best-suited research group for the research objective. The university signed eight new partnership agreements in FY2021, and had formed R&D partnerships with 86 organizations as of the end of March 2022. These organizations represent the corporate world, national government, local governments, research organizations and others. The university is also working to help invigorate and advance research by expanding corporate partnerships and increasing the number of large-scale joint research projects. University seed presentation events have been held at the Ito Campus and Nihonbashi Satellite (in Chuo-ku, Tokyo).

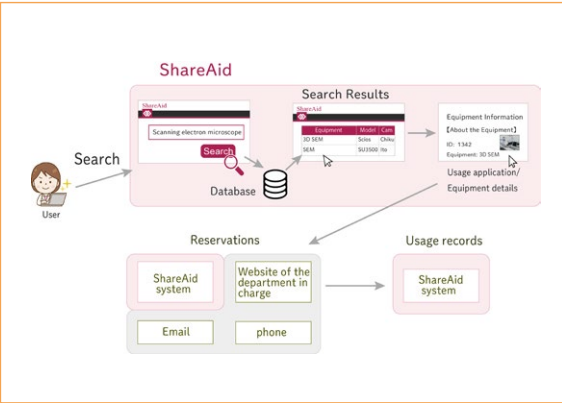


Sharing research equipment and facilities

University-wide sharing of research equipment and facilities is being promoted as a way to help make the university's research and education more internationally competitive. A university-wide platform for sharing research equipment and facilities was created in FY2018, with a portal site (ShareAid) opening in April 2019. Research equipment and facilities are currently being shared by 43 research organizations affiliated with the university. ShareAid allows users to search for shared equipment and facility information and make reservations. It is open to both university members and non-members.

See the ShareAid website for information on using shared equipment.
The Web portal for researchers to share equipment and facilities in Kyushu University

ShareAid <https://shareaid.kyushu-u.ac.jp/>



A complete lineup of services to assist academic research and partnerships between industry, academia and government
Academic Research and Industrial Collaboration Management Office

Created in April 2015, the Academic Research and Industrial Collaboration Management Office has several objectives. It provides job placements for research activity assistants within organizations. It serves as a source of information aiding academic research and assisting partnerships among industry, academia and government. It creates proposals leading to outside funding,

and it seeks ways to improve assistance programs involving intellectual property-related activities. The office provides a complete lineup of services to assist the university's academic research and partnerships between industry, academia and government. It serves as a liaison between Kyushu University and the public, so inquiries are always welcome.

Inquiries

Academic Research and Industrial Collaboration Management Office

For more information, see the AiRIMaQ website.
TEL.: 092-802-5127 AiRIMaQ Search

New overseas “Kyushu University Stockholm Liaison Office” opened in Stockholm

The Kyushu University Stockholm Liaison Office is a new overseas office launched in Stockholm, Sweden as a strategic hub in Europe. It opened and began operations in April 2020, manned by a permanent staff posted from the university. The office is located on the campus of the Karolinska Institutet, a world-class medical school and home to the assembly that selects the winners of the Nobel Prize in Physiology/Medicine. While an official in-person commemorative event was planned at the site soon after the opening, it was postponed due to a worldwide rise in COVID-19 cases. The opening was instead commemorated by a symposium hosted by the university at the site in August 2022. It was accompanied by a commemorative reception co-hosted with the Embassy of Japan in Sweden. In regards to collaboration with Swedish universities, the university has been actively involved in MIRAI 2.0, a consortium of 20 Swedish and Japanese universities, and hosted the annual MIRAI 2.0 international academic symposium on Ito Campus from November 15 to 18, 2022.

Launched by the commemorative opening event, the

Stockholm Liaison Office seeks to leverage university-wide partnerships in education and research and engage further in international collaboration to help produce future leaders in the international community and find solutions to global issues.



▲ Group photo with President Ishibashi in front of the Stockholm Liaison Office

Promoting a decarbonized society through multilateral university cooperation in the Pacific Rim region

Kyushu University has been a member of APRU (The Association of Pacific Rim Universities) since 2021. APRU is an international consortium of universities whose mission is to provide the academic knowledge to address a number of important issues facing the Pacific Rim region. Sixty universities in 19 countries and regions work together through APRU to provide a wide range of activities such as virtual exchange programs and international symposiums devoted to topics such as the environment, natural disasters and aging populations. A Carbon Neutral Society Action Month, a five-week webinar series on decarbonization, was hosted online by the university from May to June 2022. The webinar was composed of presentations and interactive sessions led by experts and researchers working in the Pacific Rim region in a number of different disciplines. This interdisciplinary approach to solving global issues sparked some lively discussions. Based on the discussions held during this webinar series and the networks created among the participants, Kyushu University is determined to engage actively in further initiatives aiming to help fight climate change and promote decarbonization.



▲ 2021 APRU Annual Presidents' Meeting (online)

To Alumni

Partnerships with Alumni Federation of Alumni Associations of Kyushu University, Kyushu University CEO Club

Departmental alumni associations, regional alumni associations, and other organizations have begun to utilize the Kyushu University network for a variety of initiatives, including student job search assistance programs and young professional study sessions. The Federation of Alumni Associations of Kyushu University, comprised of about 40 of these alumni associations, seeks to manage and collaborate with each alumni association while exchanging information with the university and among the alumni groups. In addition, the Kyushu University CEO Club, a group of corporate CEO alumni restructured into a membership organization in February 2019, holds general meetings and other events designed to expand and strengthen the members' network and to invigorate

member education and research activities at the university. The club welcomes new membership from university alumni corporate CEOs.



▲ Tokyo Alumni Association receiving a letter of appreciation from Kyushu University at the Association's Summer Festa event



▲ A meeting of the Kyushu University CEO Club

<https://www.kyushu-u.ac.jp/en/university/graduate/>

Exchange activities bringing different generations together

Academic Festival and Homecoming Day

The Academic Festival and Homecoming Day is an annual fall gathering organized by the university. Alumni, current students, faculty, staff, high school students and members of the local community take part in events such as talk shows, receptions, Ito Campus tours and presentations of work done by collaborative projects between high schools and the university. The purpose of the event is to further deepen the ties between the participants and the university.

https://www.kyushu-u.ac.jp/ja/university/graduate/academic_festival/



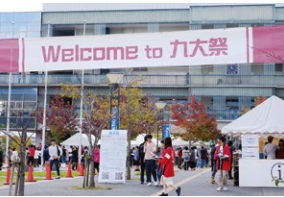
▲ The 2022 Academic Festival and Homecoming Day was the first in three years to be held on-site



▲ A lively musical performance at the Design Festival

Kyushu University Festival, Design Festival

Held in early November, the annual Kyushu University Festival and Design Festival are two of Kyushu University's largest events, typically attracting over 20,000 visitors and transforming the normally quiet learning atmosphere of the campus into a lively venue filled with excitement. Along with classroom projects and stage presentations hosted by Kyushu University students, the events also feature guidance projects for high school students and many other engaging and crowd-pleasing works.



▲ Visitors arriving under the Kyushu University Festival's welcome banner



▲ A lively musical performance at the Design Festival

Keeping in touch through Kyushu University's email newsletter

Kyushu University Lifetime Email Address Service

A university service that provides alumni and other recipients with an email forwarding address and Qdai-Mail Tsushin, a newsletter with articles on the university's latest research findings, courses, speaker events and other news. Access the URL below to receive an email forwarding address and subscribe to Qdai-Mail Tsushin.

<https://kyudai.jp/>



The Kyushu University Dr. Nakamura Tetsu Project: Passing on the Spirit of Dr. Nakamura to the Next Generation



▲ A meeting of the Kyushu University CEO Club

The late Dr. Tetsu Nakamura (1946-2019) was a University Professor and graduate of the university's School of Medicine who devoted 35 years of his life to medical care, irrigation and agriculture in rural Afghanistan and Pakistan. To share his spirit, resolve, and work with future generations, in March 2021, the university concluded a cooperation agreement with Peshawar-kai, the Japanese NGO that supports Dr. Nakamura and his team's work in Afghanistan and

Pakistan, and launched the Kyushu University Dr. Nakamura Tetsu Project. Run by university members and outsiders working together to host events and work on new education and research initiatives, the project revolves around the Dr. Nakamura Tetsu Memorial Archive, Nakamura Tetsu Digital Archive, and Nakamura Tetsu Memorial Lecture Series.

https://www.lib.kyushu-u.ac.jp/en/pj_nakamuratetsu



▲ Japanese and English leaflets publicizing the Dr. Nakamura Tetsu Memorial Archive



▲ "Diseases can be cured later. First you need to survive!"; Dr. Tetsu Nakamura's words chosen by students.



▲ The Afghan Green Ground Project [Revised Edition: The Japanese version is available on Nakamura Tetsu Digital Archive]

Dr. Nakamura Tetsu Memorial Archive

The Dr. Nakamura Tetsu Memorial Archive is an exhibition space that opened in March 2021 in the Central Library's Cute.Commons This small interactive space is designed as a connecting space for presenting Dr. Nakamura's words and activities through first-person narratives in videos, graphic images, timelines, books and other media. Quotes from Dr. Nakamura are displayed on the venue's glass screens. They were selected by a group of Kyushu University students after a number of meetings held to read from his works. The opening event held for the archive on March 21, 2021 can be viewed on YouTube.



<https://youtu.be/L6YE7bUI1cc>

Nakamura Tetsu Digital Archive

Opened in March 2021, the Nakamura Tetsu Digital Archive was created as part of the Kyushu University Institutional Repository (QIR). The archive compiles and preserves digital versions of Dr. Nakamura's writings, reports, press articles, presentations, photos, videos and other materials. Making these invaluable resources publicly available online will prevent them from being lost to history and make them universally accessible for many years to come. From March 2022, the archive began publishing the text from works published by Sekifusha*. Also, works not in general circulation are becoming publicly available.



<https://www.lib.kyushu-u.ac.jp/en/nakamuratetsu>

Nakamura Tetsu Memorial Lecture Series: Passing on the work and the spirit of Dr.Sahib

Continuing on from the 2021 school year, the Nakamura Tetsu Memorial Lecture Series is being offered as a general subject in the KIKAN education program intended mainly for first-year students in all undergraduate schools. The series, which was given at the Central Library's Cute.Commons, includes talks by speakers who worked alongside Dr. Nakamura, as well as self-directed study and group work sessions making use of the Nakamura Tetsu Digital Archive. The syllabus is designed to help students understand the meaning of Dr. Nakamura's life work, giving them approaches or suggestions for applying equivalent meaning to their own lives.



https://note.com/dr_nakamura/

Status of Finances Supporting the Activities of Kyushu University

Financial Statements

National university corporations are required to prepare a statement of accounts (financial statements, etc.), submit them to the Minister of Education, Culture, Sports, Science and Technology no later than June 30 of the following fiscal year and obtain approval.

1	Balance Sheet	This clarifies the financial position as of March 31.
2	Profit & Loss Statement	This clarifies the state of operations over the year from April 1 to March 31, representing the state of occurrence of expenses, revenue and profit.
3	Cash Flow Statement	This represents cash flows over the year from April 1 to March 31 classified by certain activities.
4	Documents Concerning the Appropriation of Profits or the Disposal of Losses	These represent the content of disposal of unappropriated retained earnings at the end of the period calculated on the Balance Sheet and the gross profit calculated on the Profit & Loss Statement.
5	National University Corporation Statement of Operating Costs*	This represents the amount of expenses (costs) required for operation of education, research, medical treatment, etc., covered by taxpayer money.
6	Annexed Detailed Statements	This provides supplementary information to 1 through 5 above.
7	Business Report*	These represent an overview of the corporation, and the relationship between financial information and content of the operations.
8	Statement of Accounts*	It clarifies an estimate of the budget and the course of subsequent operations by comparing the budget amounts in the annual plan with the actual amounts executed.

*1 through 6 are financial statements. 7 and 8 are documents submitted accompanying the financial statements.

*5 will be abolished from FY2022 due to the revision of National University Corporation Accounting Standards.

The financial statements, etc., for each fiscal year are published on the following webpage. Kyushu University home page > About > Publications > Financial Statements, etc.
https://www.kyushu-u.ac.jp/ja/university/publication/financial_statements/

Preparation of two financial reports with different preparation standards

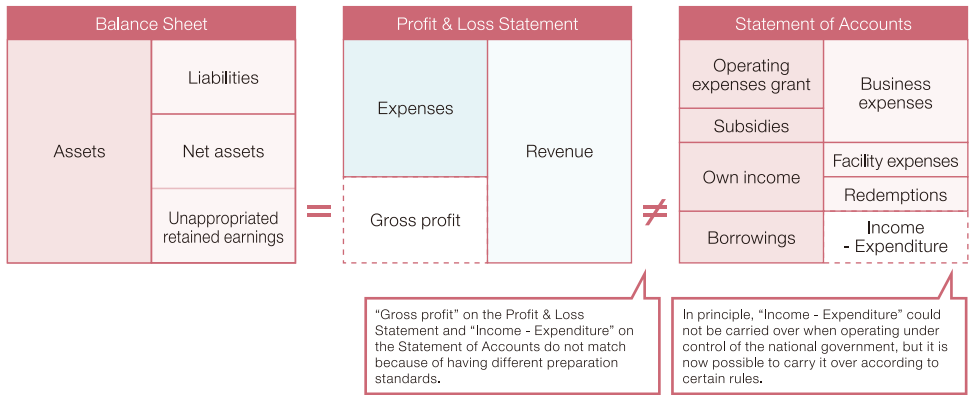
The financial statements and statement of accounts have different preparation standards.

Financial Statements

These are prepared in accordance with the National University Corporation Accounting Standards. Gross profit on the Balance Sheet and Profit & Loss Statement match.

Statement of Accounts

These are prepared according to the national government's accounting recognition standards on a cash basis, while being based on the concept of the settlement period.



Characteristics of the National University Corporation Accounting Standards

The National University Corporation Accounting Standards are the same as corporate accounting principles with respect to using double-entry bookkeeping on an accrual basis, but they have unique accounting processes differing from the corporate accounting principles based on the following characteristics of national university corporations.

Main Characteristics of National University Corporations

- Due to their public nature, it is not assumed that they will make a profit or be financially self-sufficient, and there are sources of revenue from the national government.
- There are cases in which decisions cannot be made at the sole discretion of the university, such as the national government determining and taking budgetary measures for building maintenance.
- They are not intended to have stockholders like a private enterprise, and profits are not distributed.

Accounting Unique to National University Corporations

Recognition of Revenue

As there is an obligation to implement operations such as research and education with operating expenses grant, tuition, donations, subsidies, etc., they are recorded as obligations (liabilities) when received. They are later accounted for by transferring to revenue as operations are implemented.

e.g.: Implementation of operations with operating expenses grant

Receipt of operating expenses grant		Annual settlement			
Balance Sheet (B/S)		(1) (If P/L is balanced)		(2) (If profit arises)	
		Profit & Loss Statement (P/L)		Profit & Loss Statement (P/L)	
Cash and deposits 100	Operating expenses grant obligations 100	Educational expenses 100	Operating expenses grant income 100	Educational expenses 80	Operating expenses grant income 100
				Profit 20	

Annual Settlement (1): P/L is balanced if operations are conducted normally.

Annual Settlement(2): If expenses are kept down, profit arises and becomes unappropriated retained earnings.

- Standard for monetization of operating expenses grant obligations

Periodic basis: A standard for monetization of operating expenses grant obligations by deeming operations to be implemented with the passage of time (applied in principle)
Completion basis: A standard for monetization of operating expenses grant obligations as operations are implemented (project research, etc.)
Expense basis: A standard for monetization of operating expenses grant obligations by deeming operations to be implemented in the same amount as expenses incurred (retirement benefits, etc.)

Balance of P/L

If non-current assets are obtained through operating expenses grant, tuition, donations, subsidies, etc., the obligations (liabilities) at the time of receipt are transferred to "liabilities in return for assets." Liabilities in return for assets are transferred to revenue in the form of reversal of liabilities in return for assets with the depreciation of non-current assets, and assets and liabilities, and revenue and expenses are balanced through these processes.

e.g.: Acquisition of assets with operating expenses grant

Receipt of operating expenses grant		Asset acquisition		Annual settlement (depreciation)	
Balance Sheet (B/S)		Balance Sheet (B/S)		Balance Sheet (B/S)	
Cash and deposits 100	Operating expenses grant obligations 100	Non-current assets 100	Liabilities in return for assets 100	Non-current assets 80	Liabilities in return for assets 80
				Profit & Loss Statement (P/L)	
				Depreciation expense 20	Reversal of liabilities in return for assets 20

Accounting Not Affecting P/L

Facility expenses, etc., are not recognized as expenses because the national government is responsible to take steps as a stakeholder when it is necessary to update facilities, etc. Therefore, when depreciable assets are acquired, the acquisition price is transferred to capital surplus (net assets), and at the time of depreciation, accumulated depreciation outside profit-loss (a negative item of capital surplus) is recorded rather than depreciation expenses, and capital surplus is reduced.

Example: Acquisition of assets with facility expenses granted by the national government

Receipt of facility expenses		Asset acquisition		Annual settlement	
Balance Sheet (B/S)		Balance Sheet (B/S)		Balance Sheet (B/S)	
Cash and deposits 100	Facility expenses received 100	Non-current assets 100	Capital surplus 100	Non-current assets 80	Capital surplus 80

Reserve for Specific Purpose and Reserve

If unappropriated retained earnings include profit arising from management effort, the amount approved by the Minister of Education, Culture, Sports, Science and Technology is a reserve for specific purpose, and may be used from the following fiscal year within the scope of uses of surplus specified in the mid-term plan.

Unappropriated retained earnings	
Profit arising from management effort (Profit backed by cash)	Reserve for specific purpose (Used from the following fiscal year)
Profit in accounting records (Profit not backed by cash)	Reserve (Only used to compensate for loss)

*There are accounting processes that will change from FY2022 due to revision of the National University Corporation Accounting Standards.

Balance Sheet (B/S)

(Units: millions of yen; decimals rounded off)

Item	FY2019	FY2020	FY2021	YoY Change
Assets	455,198	451,524	448,484	[3,039]
I. Non-current assets	401,813	393,700	391,883	[1,817]
1. Property, plant and equipment	386,310	375,012	370,512	(4,500)
Land	181,914	177,810	177,307	(502)
Buildings and structures	159,485	153,519	148,797	(4,721)
Facilities (Machinery, equipment, tools, furniture, fixtures and medical equipment)	23,137	22,399	23,090	691
Construction in progress	2,074	1,689	1,654	(35)
Other	19,699	19,593	19,662	68
2. Intangible assets	684	585	749	164
3. Investments and other assets	14,818	18,102	20,621	2,518
II. Current assets	53,384	57,823	56,601	[1,222]
Cash and deposits	35,136	39,262	36,352	(2,909)
Medical practice accounts receivable	9,154	10,509	10,828	318
Securities	6,699	5,621	5,664	43
Other	2,394	2,430	3,755	1,325
Liabilities	180,521	179,988	177,072	(2,909)
I. Non-current liabilities	131,150	128,471	125,718	(2,753)
Liabilities in return for non-current assets	47,414	47,674	49,432	1,758
National Institution for Academic Degrees and Quality Enhancement of Higher Education debt burden	6,262	4,840	3,440	(1,400)
Long-term borrowings	68,771	68,502	67,335	(1,166)
Long-term lease obligations	4,162	2,857	1,376	(1,480)
Other	4,539	4,597	4,132	(465)
II. Current liabilities	49,370	51,516	51,354	[162]
Operating expenses grant obligations	4,495	4,201	-	(4,201)
Donation obligations	16,548	17,313	18,291	978
Current portion of National Institution for Academic Degrees and Quality Enhancement of Higher Education debt burden	1,642	1,531	1,400	(131)
Current portion of long-term borrowings	2,793	3,135	3,078	[56]
Accounts payable - other	13,861	16,479	19,226	2,747
Lease obligations	1,560	1,608	1,545	(63)
Other	8,469	7,247	7,812	564
Net assets	274,676	271,535	271,411	(123)
I. Share capital	146,151	146,151	146,151	-
II. Capital surplus	116,136	111,478	107,426	(4,051)
III. Retained earnings	12,389	13,905	17,833	3,928
Reserve carried over from previous mid-term objectives period	6,586	6,586	6,586	-
Reserve for education, research, medical treatment, etc. (reserve for specific purpose)	2,257	3,488	2,817	(670)
Reserve	2,109	2,314	3,719	1,405
Unappropriated retained earnings	1,435	1,516	4,710	3,193
(Gross profit)	[1,435]	[1,516]	[4,710]	[3,193]

*Table figures do not always match the totals since decimal portions are rounded off.

Explanation of Items		
Construction in progress	National Institution for Academic Degrees and Quality Enhancement of Higher Education debt burden	Long-term borrowings
Part of the construction expenses for buildings and structures is paid in advance because a certain amount of time is required from the start of construction until completion. This is an item for temporarily recording the amount equivalent to this advance until the building, etc., is completed.	This is the balance of the amount equivalent to the debt burden of a national university corporation for the fiscal loan fund borrowings assumed from the former National School Special Account by the Center for National University Finance and Management (currently National Institution for Academic Degrees and Quality Enhancement of Higher Education). The borrowed funds are used for the maintenance of hospital medical treatment facilities and advanced medical equipment.	This is the balance of the amount borrowed from the National Institution for Academic Degrees and Quality Enhancement of Higher Education and private financial institutions since April 2004 when national universities were incorporated. Funds borrowed from the National Institution for Academic Degrees and Quality Enhancement of Higher Education are used for the establishment of hospital medical treatment facilities and advanced medical equipment, while funds borrowed from private financial institutions are used for the merger and relocation of campus facilities.

Overview of FY2021 Results "Facilities" increased, but due to the large size of decreasing factors such as "land" and "buildings and structures," assets decreased by 3 billion yen year on year to 448.4 billion yen.

Factors Contributing to Changes from the Previous Fiscal Year

Land	Buildings and structures	Investments and other assets	Cash and deposits	"National Institution for Academic Degrees and Quality Enhancement of Higher Education debt burden, long-term borrowings"	Operating expenses grant obligations	Capital surplus
Decreased by 500 million yen due to the sale of part of the former site of Harumachi Farm.	Decreased by 4.72 billion yen overall due to a decrease of 8.51 billion yen due to depreciation, etc., despite an increase of 3.79 billion yen due to renovations, etc., of Open Design Laboratory (Ohashi).	Increased by 2.51 billion yen overall due to a 1.47 billion yen due to investment securities associated with fund management and an increase of 1.16 billion yen in long-term advances paid for the disposal of the former site of the Hakozaki Campus.	Cash and deposits decreased by 2.90 billion yen due to investments and other assets increasing by 2.51 billion yen as a result of acquisition of investment securities for fund management.	Decreased by 2.75 billion yen overall due to a decrease of 4.66 billion yen due to repayments, despite an increase of 1.91 billion yen due to new borrowings in the hospital.	Decreased by 4.20 billion yen due to reconciliation of the entire amount as a period-end treatment for the last year of the third mid-term objectives period.	Decreased by 4.05 billion yen overall due to an increase in depreciation of campus buildings, etc., on the Ito Campus, although there was a 28.7 billion yen increase resulting from the improvement of facilities and acquisition of education and research equipment such as for renovations, etc., of Open Design Laboratory (Ohashi).

Profit & Loss Statement (P/L)

(Units: millions of yen; decimals rounded off)

Item	FY2019	FY2020	FY2021	YoY Change
I. Ordinary expenses	125,206	124,642	131,332	6,690
Business expenses	120,296	119,750	126,608	6,858
Educational expenses	5,204	5,428	5,862	434
Research expenses	12,250	10,795	11,691	895
Medical treatment expenses	34,357	35,008	38,864	3,855
Education and research support expenses	3,357	3,133	3,445	311
Contract research expenses	6,940	7,029	7,470	440
Joint research expenses	1,989	1,859	1,975	116
Contract project expenses, etc.	723	657	932	274
Personnel expenses	55,473	55,837	56,367	529
General and administrative expenses	4,607	4,645	4,517	[128]
Financial expenses	286	198	170	(27)
Miscellaneous expenses	14	48	36	(12)
II. Extraordinary losses	669	183	394	210
Loss on retirement of non-current assets	427	170	324	154
Loss on sale of non-current assets	-	1	0	(0)
Impairment loss	20	0	1	0
Casualty loss	4	11	43	31
Other	217	-	25	25
Total expenses	125,876	124,826	131,727	6,900
I. Ordinary revenue	126,910	126,042	135,844	9,802
Operating expenses grant income	38,461	37,995	40,473	2,478
Revenues from tuition fees	9,171	8,325	8,612	287
Revenues from enrollment fees	1,511	1,487	1,505	17
Revenues from examination fees	266	266	278	12
Revenues from the university hospital	50,250	50,059	54,357	4,298
Revenues from contract research	9,347	9,287	10,214	927
Revenues from joint research	2,595	2,370	2,710	339
Revenues from contract projects	779	722	1,068	346
Revenues from donations	2,938	2,811	2,688	(123)
Revenues from subsidies and other financial assistance	2,867	4,606	5,756	1,149
Revenues from facility expenses	686	196	655	458
Reversal of liabilities in return for assets	4,822	4,372	4,369	(3)
Financial revenues	44	43	53	10
Miscellaneous expenses	3,161	3,492	3,090	(402)
Other	4	3	8	5
II. Extraordinary profit	359	301	507	206
Gain on sale of non-current assets	0	232	5	(227)
Reversal of liabilities in return for assets (extraordinary)	159	68	35	(33)
Operating expenses grant income (extraordinary)	-	-	466	466
Other	200	0	0	0
Total revenue	127,270	126,343	136,351	10,008
Profit (total revenue - total expenses)	1,394	1,516	4,624	3,107
Reversal of reserve for specific purpose	40	-	85	85
Gross profit (profit + reversal of reserve for specific purpose)	1,435	1,516	4,710	3,193

*Table figures do not always match the totals since decimal portions are rounded off.

Overview of FY2021 Results Ordinary expenses increased by 6.6 billion yen year on year to 131.3 billion yen due to increases in "research expenses," "medical treatment expenses" and "contract research expenses." Meanwhile, ordinary revenue increased by 9.8 billion yen year on year to 135.8 billion yen due to increases in "operating expenses grant income," "revenues from the university hospital," "revenues from contract research" and "revenues from subsidies and other financial assistance." Gross profit increased by 3.1 billion yen year on year to 4.7 billion yen due to the increase in revenue exceeding the increase in expenses.

Factors Contributing to Changes from the Previous Fiscal Year

Educational expenses, research expenses and education and research support expenses	General and administrative expenses	Medical treatment expenses, revenues from the university hospital	Contracted and joint research expenses, revenues from contracted and joint research	Operating expenses grant income	Revenues from subsidies and other financial assistance
Increased by 1.64 billion yen due to increases related to operations such as supplies expenses, fixtures expenses and transportation expenses, in addition to an increase in depreciation of facilities.	Decreased by 120 million yen due to a decrease in repair expenses.	Revenues from the university hospital increased by 4.29 billion yen and medical treatment expenses increased by 3.85 billion yen due to increases in the number of patients and the number of surgeries.	While revenue increased by 1.61 billion yen, expenses related to contracted research and depreciation expenses increased by 830 million yen.	Increased by 2.47 billion yen due to monetization of the increase in the amount of expenses executed that were funded by the operating expenses grant.	Increased by 1.14 billion yen due to acquisition of subsidies related to the educational program for doctoral program students and subsidies related to COVID-19.

Cash Flow Statement

(Units: millions of yen; decimals rounded off)

Item	FY2019	FY2020	FY2021	YoY Change
I. Cash flows from operating activities	8,348	10,065	10,451	386
Proceeds from operating expenses grant	40,601	39,005	39,201	196
Proceeds from university hospital	50,247	48,705	54,058	5,353
Proceeds from student payments	10,009	9,972	9,911	(60)
Proceeds from subsidies and contract research	15,465	18,378	20,188	1,810
Payments for purchase of raw materials, products, or services	(49,263)	(48,505)	(53,908)	(5,403)
Payments for personnel expenses	(58,134)	(57,592)	(58,613)	(1,020)
Other	(578)	101	(387)	(489)
II. Cash flows from investing activities	(8,154)	(2,345)	(6,282)	(3,937)
III. Cash flows from financing activities	(5,161)	(3,762)	(5,080)	(1,317)
IV. Translation differences on funds	0	19	2	(16)
V. Increase (or decrease) in amount of funds (I+II+III+IV)	(4,968)	3,975	(909)	(4,885)
VI. Balance of funds at beginning of period	20,604	15,636	19,612	3,975
VII. Balance of funds at end of period (V+VI)	15,636	19,612	18,702	(909)

*Table figures do not always match the totals since decimal portions are rounded off.

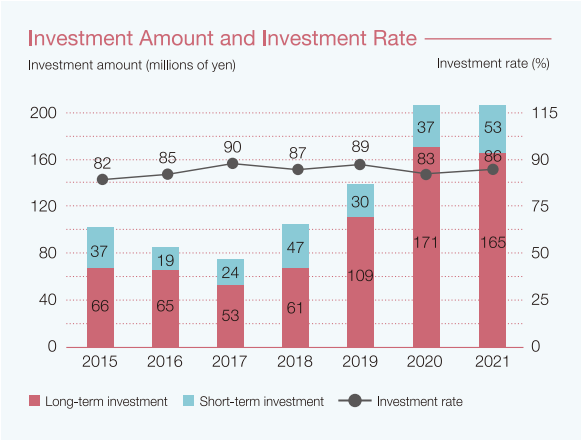
Overview of FY2021 Results

Cash flows from operating activities were 10.4 billion yen (up 300 million yen year on year) partly due to increases in proceeds from university hospital and proceeds from subsidies. Cash flows from investing activities were -6.2 billion yen (down 3.9 billion yen year on year) and cash flows from financing activities -5.0 billion yen (down 1.3 billion yen year on year), resulting in the balance of funds at end of period being 18.7 billion yen (down 900 million yen year on year).

Explanation of classifications		
I. Cash flows from operating activities	II. Cash flows from investing activities	III. Cash flows from financing activities
This represents the state of income and expenditure of funds associated with the implementation of normal operations of the university such as education, research and medical treatment. Purchases of goods and services required for education, research and medical treatment, tuition from students and university hospital income from patients are recorded.	This represents the state of income and expenditure of funds associated with the implementation of investment for the establishment of operational infrastructure for the future. Management of funds such as term deposits and securities and the acquisition and sale of non-current assets are recorded.	This represents the state of income and expenditure of funds associated with funding and repayment. Funds borrowed from the National Institution for Academic Degrees and Quality Enhancement of Higher Education and private financial institutions for improvement of the hospital and campus merger and relocation projects, repayment expenses therefor, and payments for facilities implemented through lease agreements are recorded.

Financing Activity Topics

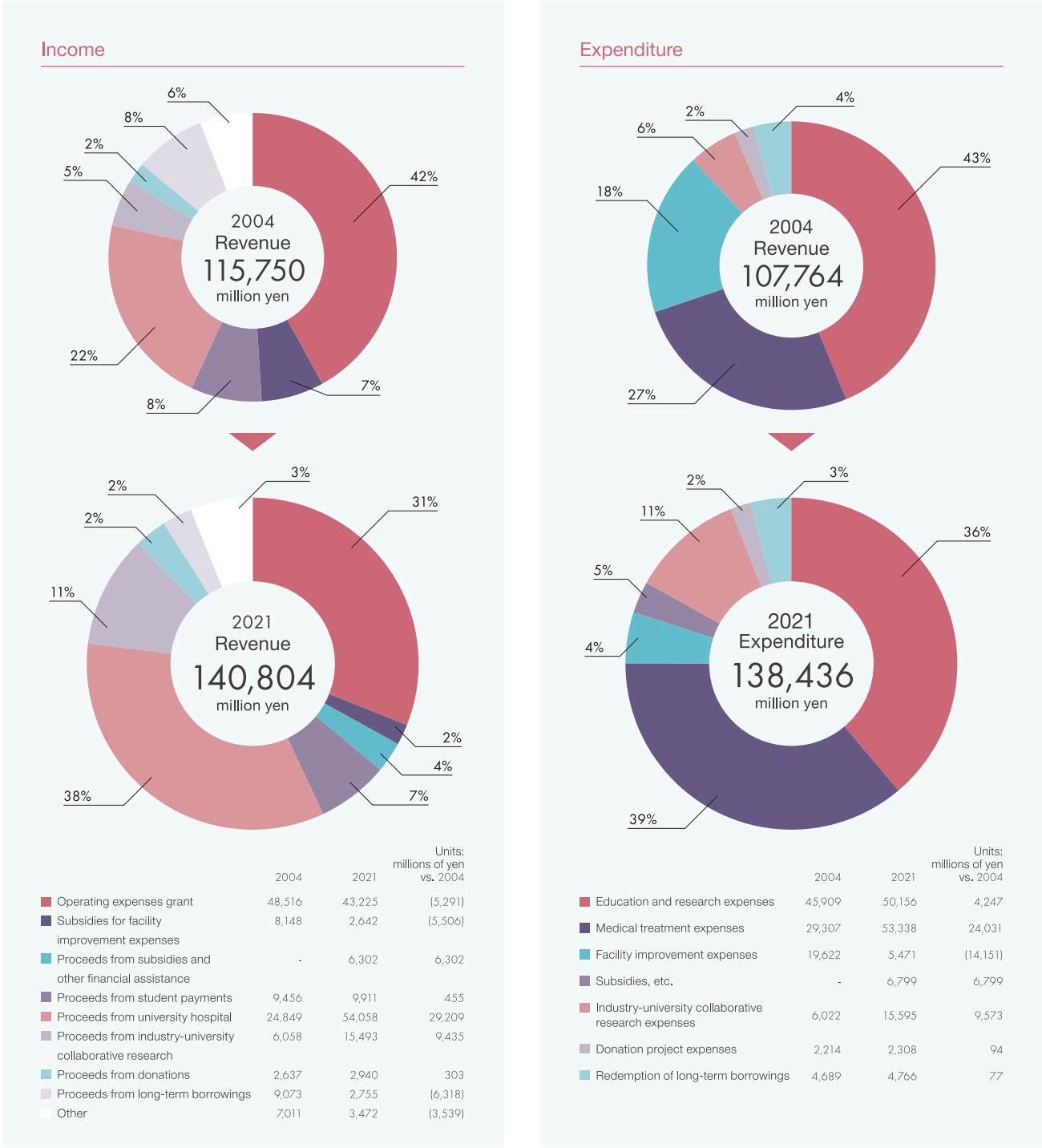
As the operating expenses grant has decreased every year since the incorporation of national universities, securing diverse revenue sources has become an issue. Kyushu University has purchased bonds such as Japanese government bonds and made term deposits using surplus cash on hand not scheduled to be used for payments for some time. In addition to financial instruments that guarantee principal, the university has also started investing in financial instruments (such as foreign government bonds) with high profitability and risk following the revision of national law in FY2018, resulting in the acquisition of 220 million yen in investment income in FY2021. Movements of funds based on these activities are represented in “cash flows from investing activities”. Under conditions with progressively falling interest rates, the university has sought to reduce dormant funds by making detailed cash flow plans, and will continue to aim to secure further gains on investment through flexible and efficient investment.



Financial Structure (Financial Report)

Topics

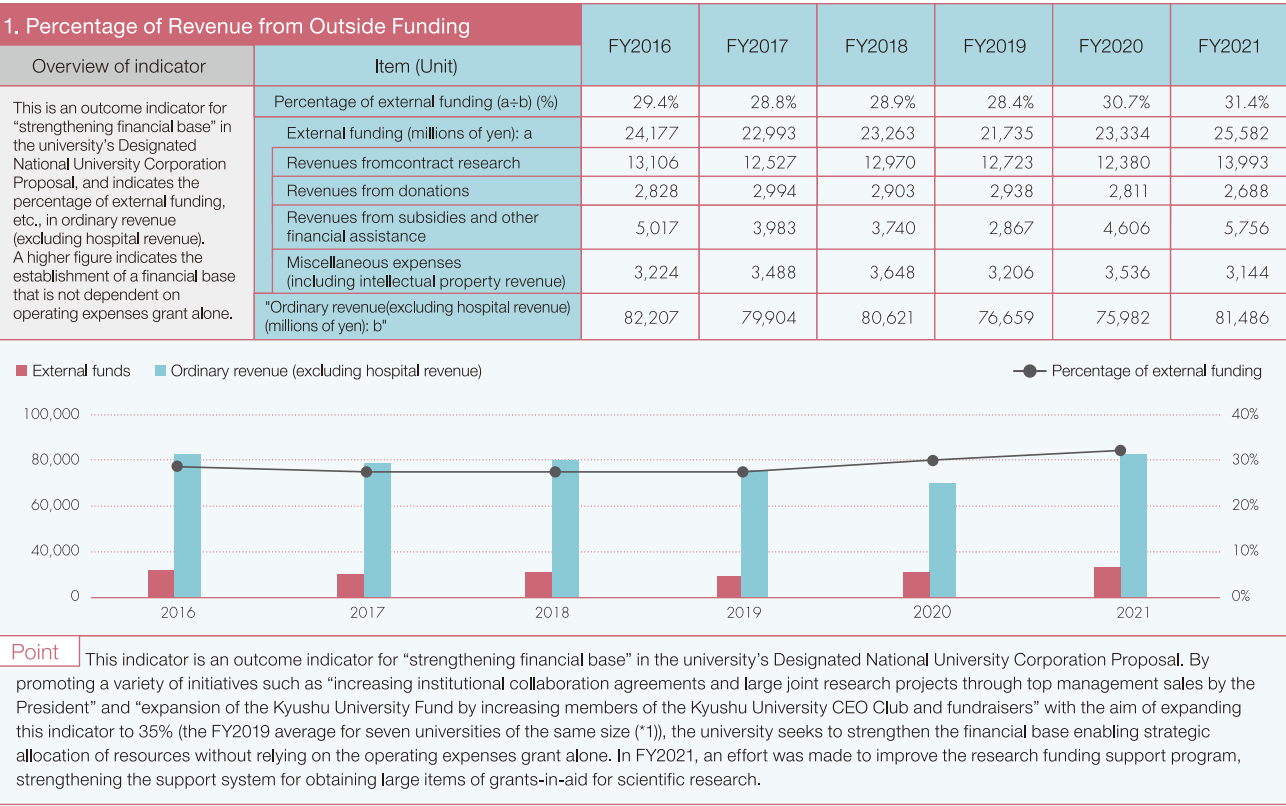
Over a decade has passed since the university was incorporated in FY2004, and its financial structure has changed significantly. In terms of income, as the operating expenses grant received from the national government decreases, proceeds from university hospital and proceeds from industry-university collaborative research are increasing significantly, and of these, proceeds from university hospital are continuing to grow through hospital management efforts, now exceeding the amount of the operating expenses grant. Meanwhile, expenditure is increasing overall with the expansion of the size of operations, and the increase in medical treatment expenses is particularly marked.



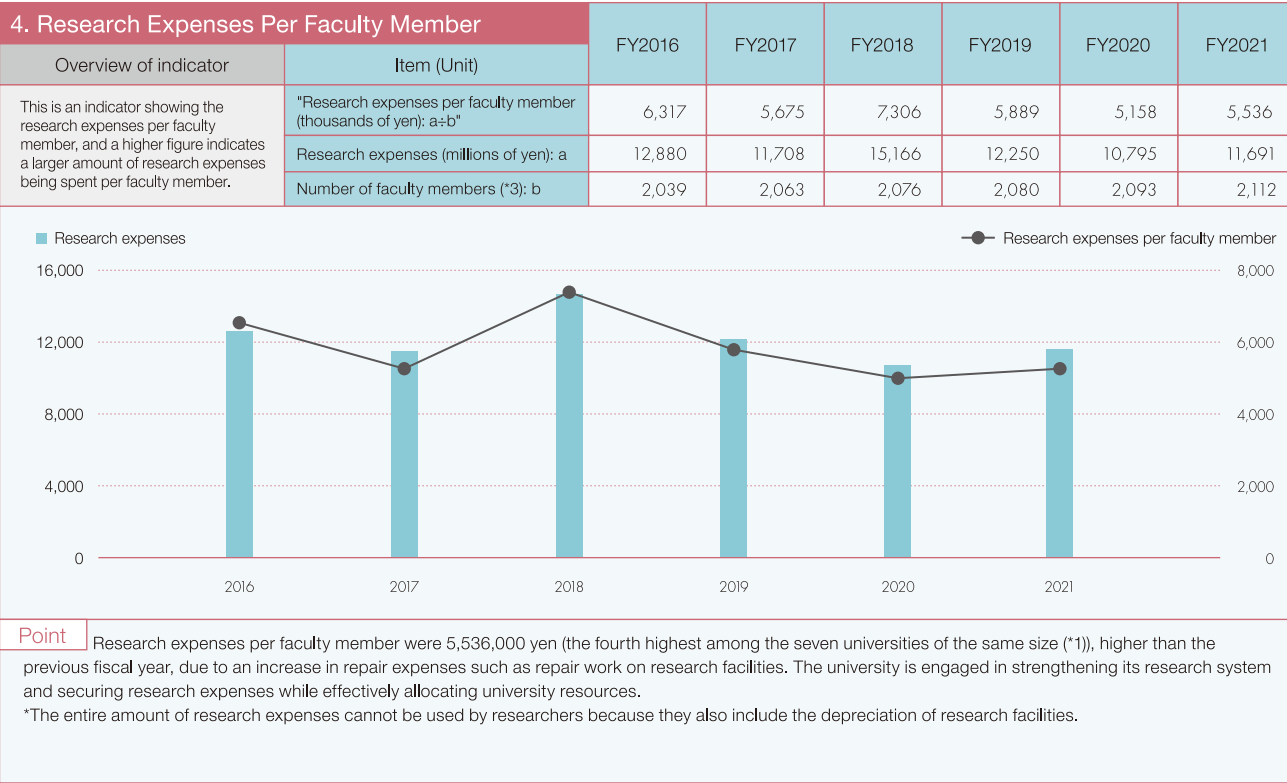
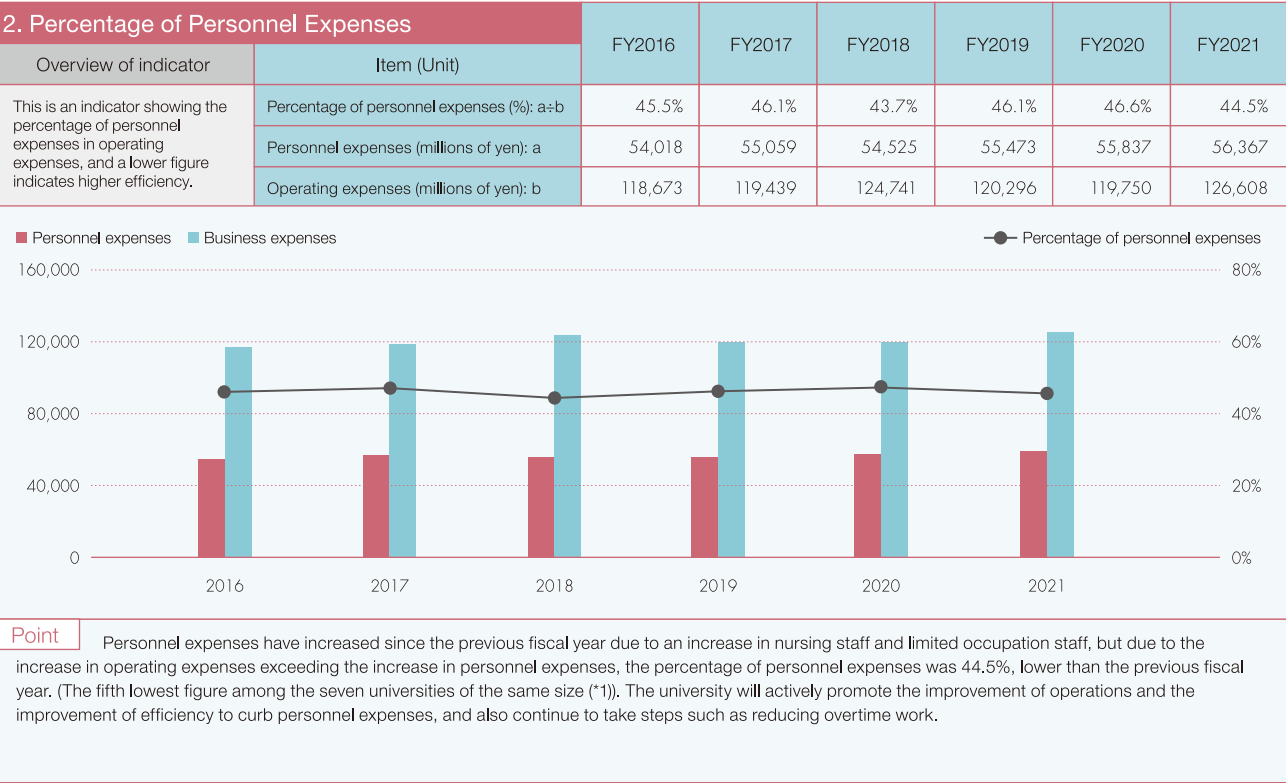
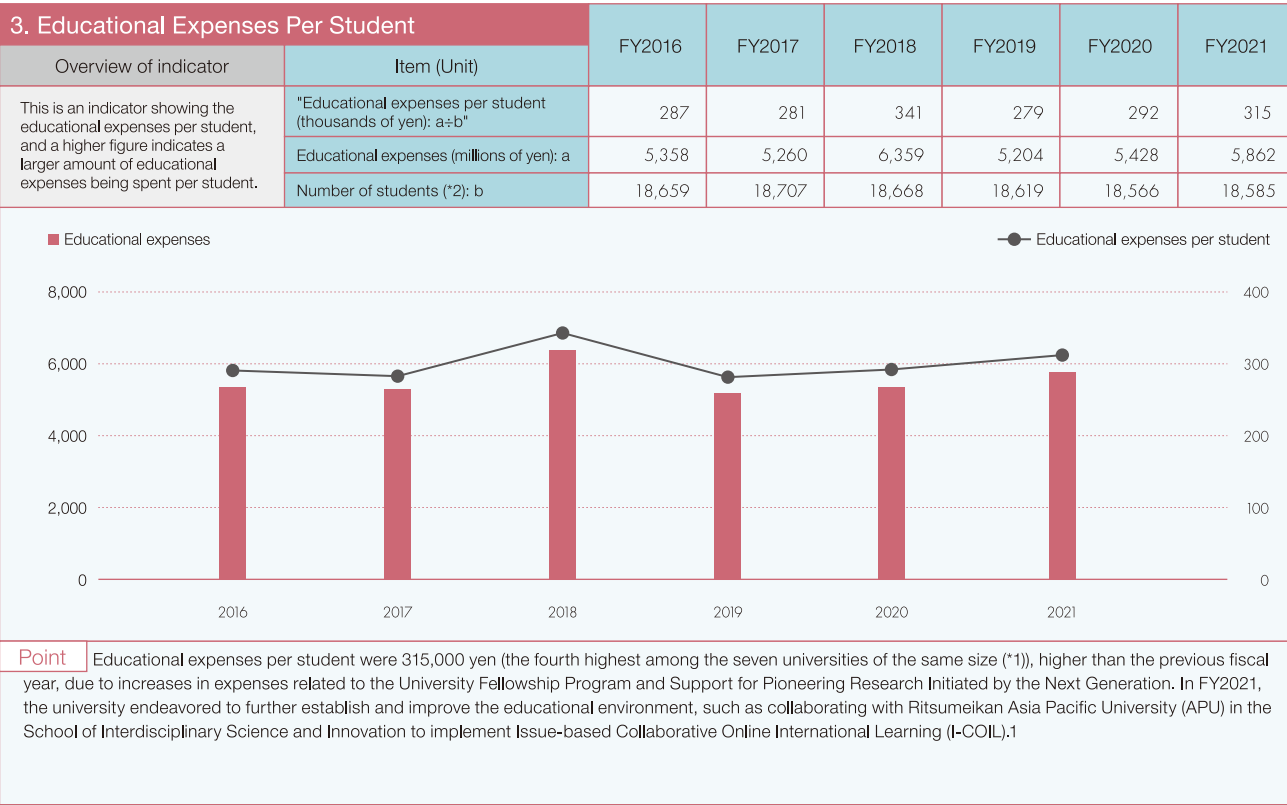
*The above figures are the amounts on the Statement of Accounts.
*The 2004 Statement of Accounts has an item for “General and administrative expenses,” but this has been allocated to “Education and research expenses” and “Medical treatment expenses” in the graph for convenience.
*External funding such as proceeds from industry-university collaborative research above does not match the incoming amount on page 47 because the amounts allocated to other institutions are excluded from the amount posted.
*Table figures do not always match the totals since decimal portions are rounded off.

Financial Indicators

Financial indicators are basic data for comprehensive understanding and analysis of the financial condition and operating status of a national university corporation. They are not for evaluating the actual education and research activities of the national university corporation, but are expected to be utilized as one form of reference information for multifaceted understanding of the status of activities. The following is a summary of the six fiscal years from FY2016 until FY2021.



*1 Seven universities of the same size (Hokkaido University, Tohoku University, The University of Tokyo, Tokai National Higher Education and Research System, Kyoto University, Osaka University, Kyushu University)
*2 Number of students (undergraduate students, graduate students) as of May 1
*3 Number of faculty members (full time) as of May 1
*4 Table figures do not always match the totals since decimal portions are rounded off.

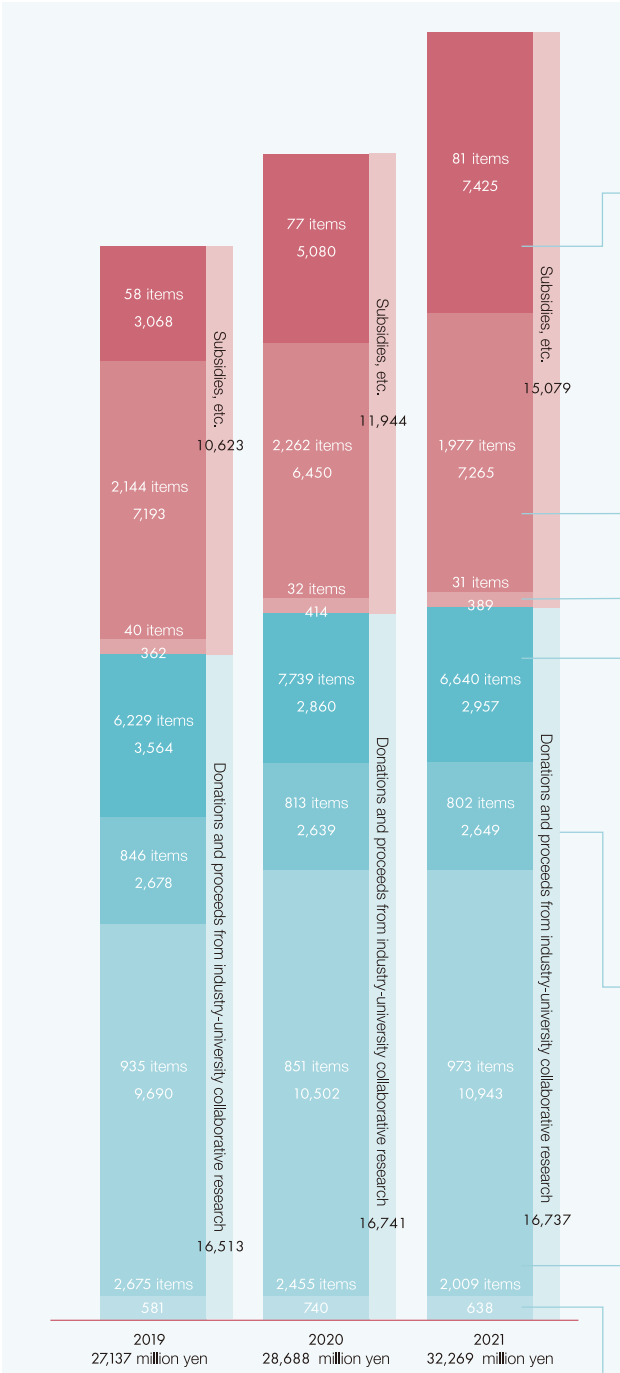


External Funds Received

In addition to the operating grant provided by the national government, the university is endeavoring to obtain external funding (grants-in-aid for scientific research, proceeds from industry-university collaborative research, donations, etc.) essential for the advancement of educational and research activities.

Topic 1

The amount of external funds received is generally the same, but the number of donations received is increasing. The university is working to improve benefits for people who make donations, such as use of university facilities and discount services at hotels and restaurants nationwide, in order to receive donations from more people. See page 55 for details.



*This graph includes indirect expenses and general and administrative expenses.
*Table figures do not always match the totals since decimal portions are rounded off.

Subsidies

These include Grants for Promoting the Strengthening of National University Reform, Grants for Promotion of Medical Research and Development, Grants for Creating Research Hubs, etc.

- Grants for Promoting the Strengthening of National University Reform 3 items 401,314,000 yen (received in FY2021)
- Grants for Promotion of Medical Research and Development 5 items 1,264,478,000 yen

Grants-in-Aid for Scientific Research

(Scientific Research Expense Subsidy / Academic Research Assistance Fund Subsidy)

These are subsidies granted by the Ministry of Education, Culture, Sports, Science and Technology for the purpose of advancement of creative and pioneering research in all areas.

- Grants-in-Aid for Scientific Research (Scientific Research (S)) 16 items 619,320,000 yen
- Grants-in-Aid for Scientific Research (Scientific Research (A)) 98 items 1,125,930,000 yen
- Grants-in-Aid for Scientific Research (Scientific Research (B)) 361 items 1,827,411,000 yen

Scientific research grants-in-aid other than from MEXT

These are grants-in-aid provided by the national government or an independent administrative agency, etc., for the purpose of promoting scientific technology.

- Grants-in-Aid for Research Projects to Promote Health, Welfare and Labor Administration 2 items 226,213,000 yen
- Ministry of Health, Labour and Welfare Grants-in-Aid for Scientific Research 9 items 137,584,000 yen

Donations

These are funds donated to the university by companies and individuals for the improvement of academic research and education.

- Perinatal and Pediatric Medicine Lecture(endowed chair) 60,000,000 yen
- Medical and Engineering Collaboration Healthy Longevity Lecture (endowed chair) 57,200,000 yen
- Kyushu University Fund Projects 135,580,000 yen

Joint Research

These are funds received for the implementation of joint research with companies, etc.

- Bidirectional Joint Research 145,218,000 yen

Contract Research

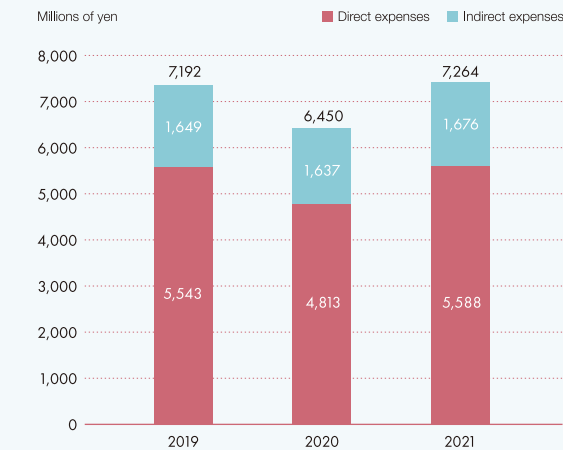
These are consignment fees received as research expenses through public offerings from the national government or independent administrative agency, etc., or from private companies.

- New Energy and Industrial Technology Development Organization Consignment Fees 86 items 2,910,072,000 yen
- Japan Agency for Medical Research and Development Consignment Fees 176 items 2,640,620,000 yen

Other

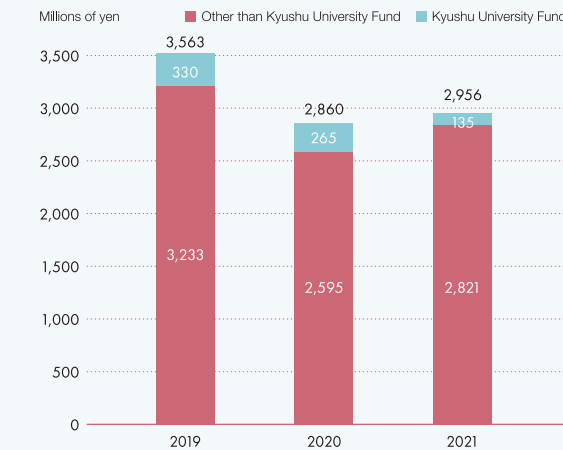
These are funds received for clinical contract research (clinical trials), contracted researchers and analysis fees.

Amount of Grants-in-Aid for Scientific Research



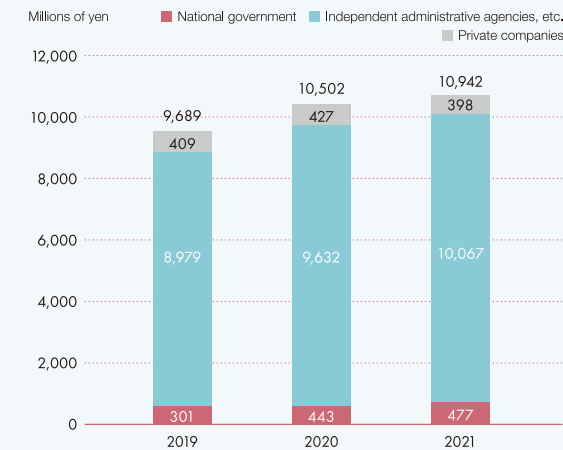
*Table figures do not always match the totals since decimal portions are rounded off.

Amount of Donations Received



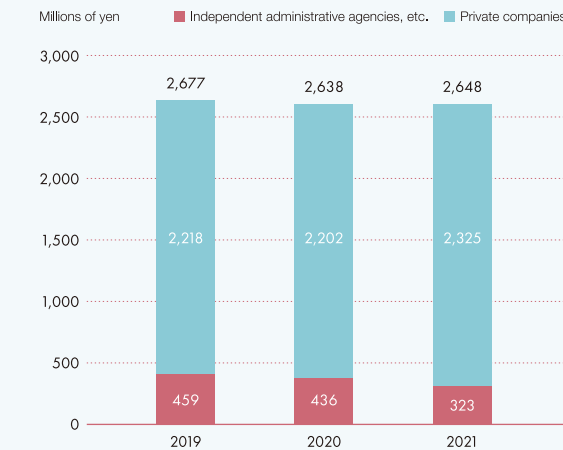
*Table figures do not always match the totals since decimal portions are rounded off.

Amount of Contract Research Expenses Received



*Table figures do not always match the totals since decimal portions are rounded off.

Amount of Joint Research Expenses Received



*Table figures do not always match the totals since decimal portions are rounded off.

Topic 2

The university holds internal briefings for young researchers and individual consultations inviting lecturers from outside the university to improve the acquisition of external funds. Furthermore, in addition to the Japanese version of the Handbook for Application and Acquisition of KAKENHI, an English version has been prepared and is distributed to all faculty members. The university also endeavors to increase motivation to acquire external funding in the university by distributing a Research Strategy Data Book that analyzes the state of acquisition of various external funding in the university, and the current state of research capability of the university compared to other universities.



Financial Information, Results and Accomplishments by Segment

Segment Information

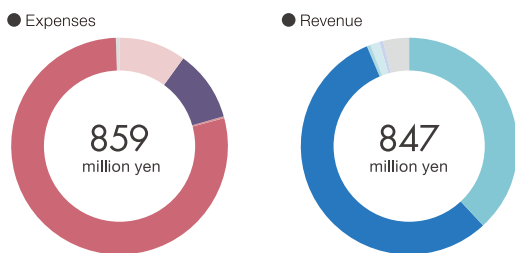
At present, segment information on Kyushu University is disclosed in the categories of “Undergraduate School, Graduate School, Faculty, etc.,” “University Hospital,” “Research Institute for Applied Mechanics,” “Medical Institute of Bioregulation,” “Research Institute for Information Technology” “Institute for Materials Chemistry and Engineering,” “Institute of Mathematics for Industry,” “Investment

Projects, etc.” and “Corporate” in the annexed detailed statement of the financial statements. In the Integrated Report, the classification of “Undergraduate School, Graduate School, Faculty, etc.” is disclosed by classification into Undergraduate School, Graduate School, Faculty and International Institute as an initiative for “visualization inside and outside the university.”

Faculty of Humanities

Establishment and expansion of international education and research centers for humanities

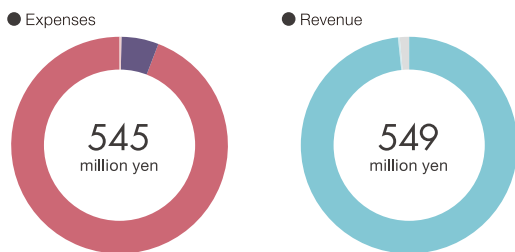
The Faculty of Humanities, the Graduate School of Humanities and the School of Letters have engaged in initiatives to become international educational and research centers for Japanese studies and Japanology, and FY2021 was the final year of the budgetary requests that had been obtained for three years. The faculty published English books and English journals, and jointly held an online exhibition with Ewha Womans University in South Korea and an online symposium called “Mapping Movement of Art, Ideas, and People in Asia.”



Faculty of Languages and Cultures

Start of operation of new English curriculum (Q-LEAP3)

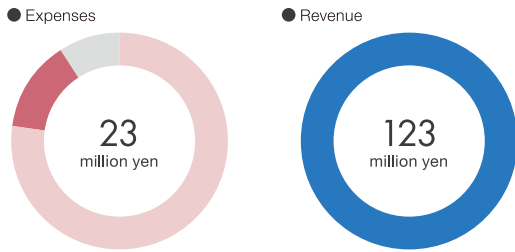
The faculty introduced a new curriculum (Q-LEAP3) for the KIKAN education English subjects. In this curriculum, after learning compulsory subjects in the first and second years, lectures are held for the subject “Advanced Academic English” in higher years for developing advanced English ability enabling the continuation of English study for studying abroad and advancement to graduate school, and measures for certification tests for studying abroad and training for preparation of academic papers and presentations are carried out.



School of Education

Promotion of international exchange

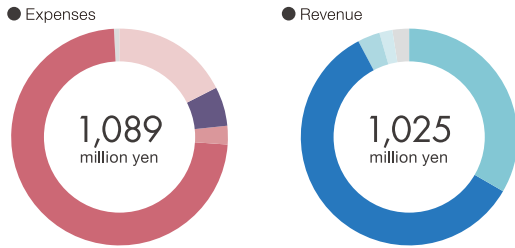
The School implements the “expansion of School of Education overseas promotion (high school-university coordination and short-term study abroad) utilizing overseas high school-university contact points” selected for the Top Global University Project (SHARE-Q). In addition, the School promotes international exchange such as continuation of the academic exchange and student exchange agreement with the Faculty of Education and Human Development of The Education University of Hong Kong, continuation of the departmental exchange agreement with the Faculty of Education of East China Normal University, continuation of the “Taiwan Studies Project” agreement with the Taiwan Ministry of Education, and cooperation with development of education methods in Japanese language education and moral education in the development of the “Yanagawa Class” Japanese style education, in collaboration with Yanagawa High School, with which the university is affiliated, and high schools and universities in Thailand.



Faculty of Law, Law School

Selection of project in Responsible Innovation with Conscience and Agility (RIinCA) for ethical, legal, and social implications/issues (ELSI) of science and technology.

The Faculty of Law treats research on ethical, legal, and social implications/issues (ELSI) of science and technology as a priority issue, and “Comprehensive Research of the Ethical, Legal and Social Issues as Prerequisites for the Social Acceptance of Urban Air Mobility” (research representative: Professor Ryu Kojima, FY2021-FY2024) was newly selected as a research and development program for Responsible Innovation with Conscience and Agility (RIinCA) for ethical, legal, and social implications/issues (ELSI) of science and technology by the Japan Science and Technology Agency’s Research Institute of Science and Technology for Society (JST-RISTEX) in FY2021.



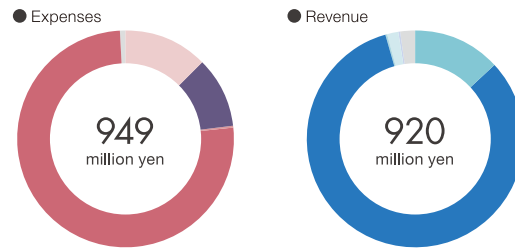
Expenses: Educational expenses, Research expenses, Medical treatment expenses, Education and research support expenses, Contract and joint research expenses, etc., Contract project expenses, etc., Personnel expenses, Other

Revenue: Operating expenses grant income, Revenues from student payments, Revenues from the university hospital, Contract and joint research revenues, etc., Revenues from donations, Revenues from subsidies and other financial assistance, Other

Faculty of Economics

Completion of first year of GProE students

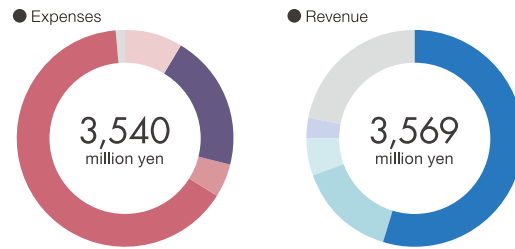
The “School of Economics Global Diploma Program” (GProE) started in April 2018 is a program that selects students when they advance to second year with the aim of developing global human resources by requiring them to undertake short-term language study abroad, long-term student exchanges and a graduation thesis in a foreign language. While the compulsory long-term student exchange became difficult due to COVID-19, four of the first-year GProE students completed the program in FY2021, with motivated global human resources taking flight with diplomas in hand as the first students to complete the program.



Faculty of Science

Start of Human Resources Development Fellowship Program(Quantum Science Area)

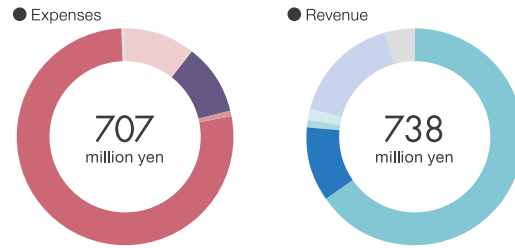
The Graduate School of Science was selected in a designated area (quantum science) of the University Fellowship Program for the Creation of Innovation in Science and Technology offered by the Ministry of Education, Culture, Sports, Science and Technology, and started the Human Resources Development Fellowship Program (Quantum Science Area) in FY2021. It is a new doctoral program student support model comprehensively covering economic and career aspects for the purpose of development of doctoral human resources at the top level, pioneering the future of the area of quantum science. Six people are chosen each fiscal year to conduct development of expert human resources with the cooperation of other relevant departments and industry.



Faculty of Mathematics

Graduate School of Mathematics for Innovation Program

The Graduate School of Mathematics for Innovation, which is a Ministry of Education, Culture, Sports, Science and Technology Doctoral Program for World-leading Innovative & Smart Education selected in FY2020, was started for students chosen from the Graduate School of Mathematics, the Graduate School of Information Science and Electrical Engineering and the Graduate School of Economics. 20 students (including transfers; 14 from the Graduate School of Mathematics) were chosen to participate in the program as first-year students, and activities began with the aim of co-creation with a variety of areas based on mathematical ability and statistical ability with ample economic support and under the guidance of several faculty members through a multi-mentor system. This fiscal year, preparations were made for the “Joint Graduate School of Mathematics for Innovation” utilizing joint courses of graduate programs, etc., for a new system of the national government as an educational organization for implementing the program, and it was established in April 2022. For details, see the following web page.

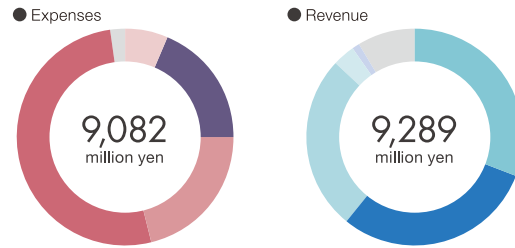


<https://www.gpmi.kyushu-u.ac.jp/about/>

Faculty of Engineering

Full start of OSP through medical engineering digital transformation

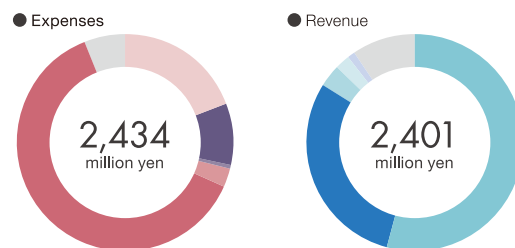
The Department of Applied Chemistry of the Faculty of Engineering is playing a central role with the cooperation of the Institute of Systems, Information Technologies and Nanotechnologies (ISIT) to engage in an initiative forming a platform for creation of innovation (Open Science Platform: OSP). This initiative is aimed at the creation of innovative ideas in the area of health technology through the practical implementation of medical engineering digital transformation, which is an attempt to aggregate a variety of knowledge and utilize medical data transcending existing concepts. OSP will expand the circle of innovation by calling for additional members in addition to current members such as companies and the Fukuoka City municipal government.



Faculty of Design

Activities of the Design Initiative for Diversity & Inclusion

Division and intolerance cause serious problems in society. The Faculty researches, teaches and implements design that includes diverse people including people who have been inhibited by society. In FY2021, the Faculty conducted research on themes such as disability, gender and raising children, held exhibitions and contests in coordination with Fukuoka City and Fukuoka Prefecture, and conducted a course on “Design for Diversity & Inclusion” attended by 300 students. Furthermore, the Faculty made a variety of proposals associated with Kyushu University’s Commitment to Diversity, Equity and Inclusion. It will continue more specific implementation and education for the creation of an inclusive society in the future.



Expenses: Educational expenses Research expenses Medical treatment expenses Education and research support expenses Contract and joint research expenses, etc. Contract project expenses, etc. Personnel expenses Other

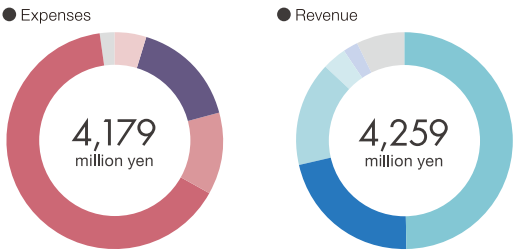
Revenue: Operating expenses grant income Revenues from student payments Revenues from the university hospital Contract and joint research revenues, etc. Revenues from donations Revenues from subsidies and other financial assistance Other

Faculty of Agriculture

Effective measures for reducing fatalities from landslides change with the times

The Faculty performed comparisons and analysis of the number of fatalities from landslides caused by heavy rainfall over the past 74 years, and changes in a variety of natural and social factors, and indicated that the factors causing a reduction in the number of fatalities from landslides change with the times. It was found that the reduction in the number of fatalities seen until around 2000 was due to changes in the structure of residences (decrease in single-story buildings), in addition to the high probability of contribution of the increase in people evacuating in the early period, the maturation of forests in the middle period, and the installation of civil engineering structures in the latter period. It is highly probable that the increase in the

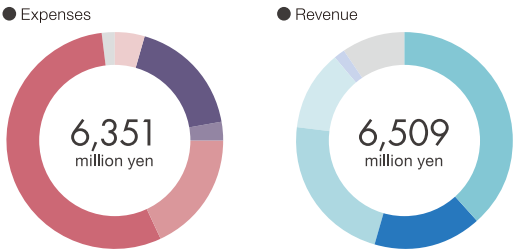
number of landslides occurring in the past 15 years is due to the increase in rainfall, and this may be a predictor of an increase in fatalities from landslides in the future.



Faculty of Medical Sciences

Revelation of the molecular structure of age-related diseases and development of new diagnosis and treatment methods

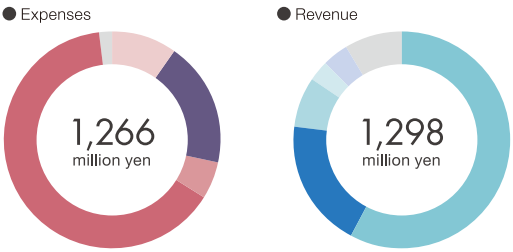
The Department of Medicine and Bioregulatory Science in the Faculty of Medical Sciences offers Endocrinology, Metabolism and Diabetes, and Hepato-Pancreatic-Biliary Sciences as one of the general internal medicine courses in Kyushu University Hospital, and is engaged in the treatment of and research on related diseases. The Faculty has introduced the latest analytical methods starting with clinical cases and samples, and promotes research on molecular medicine related to the revelation of the molecular structure of age-related diseases that present due to an imbalance of adrenogenic hormones and the development of new diagnosis methods and treatment methods. This research was selected for the Grants-in-Aid for Scientific Research (Scientific Research (S)).



Faculty of Dental Science

Establishment of two major research centers

The Faculty of Dental Science has been engaged in two research projects in the form of "Oral health science that maintains general health through oral health" and "Research into tissue regeneration and rebuilding" in the past. However, it established the Oral Health, Brain Health, Total Health (OBT) Research Center in 2016 and the Dent-craniofacial Development and Regeneration (DDR) Research Center in January 2022, establishing a research system for multidisciplinary and interdisciplinary study of the two research projects above. The OBT Research Center conducts research on revealing the causes of reduced overall physical function caused by reduction of oral cavity functions, and measures to address these. It has produced many results such as indicating the relationship between periodontal disease and the onset of dementia. In the future the DDR Research Center aims to expand as a research and education hub for coordination with companies and the development of human resources required for the development of regenerative medical treatment and diagnostic technology using oral cavity tissue as a bio-resource, development of artificial bones and also the launch of new medical technologies.

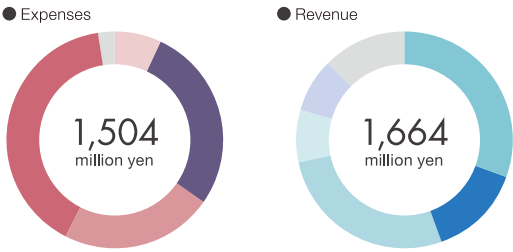


Faculty of Pharmaceutical Sciences

Structural Drug Discovery Center Via Green-Pharma

The Center was completed in January 2022 to accelerate research on drug discovery via "Green-Pharma" combining the expansion of indications of existing approved drugs (drug development eco pharma) and synthesis of environmentally friendly drugs (green chemistry). The objective is to promote structural analysis research (analysis of structure and function) using the world's leading cryogenic electron microscope to overcome the three main causes of death accounting for 70% of deaths in Japan, with the aim of forming an "Academia Drug Discovery Hub" for swiftly and efficiently

developing innovative pharmaceuticals and diagnostic markers, and achieving globalization of research and education through international joint research.

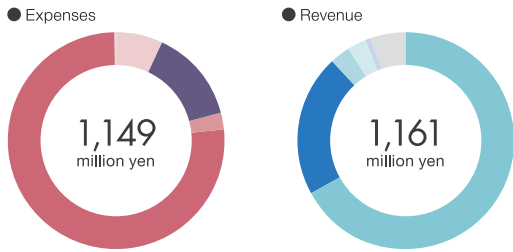


Faculty of Human-Environment Studies

Selection in the Inter-University Exchange Project initiative

The "Cooperative Educational Program for Fostering Human Resources to Lead Sustainable Development of Recycle-Based Zero-Emission Urban and Architectural Environment in Asia" was selected as the third mode of so-called "Campus Asia," a triangular project with cooperation of governments, universities and quality assurance organizations in Japan, China and South Korea in the Inter-University Exchange Project initiative. Going forward, the Kyushu University Faculty of Human-Environment Studies will serve as a hub for the development of highly specialized human resources (researchers and technicians) by forming

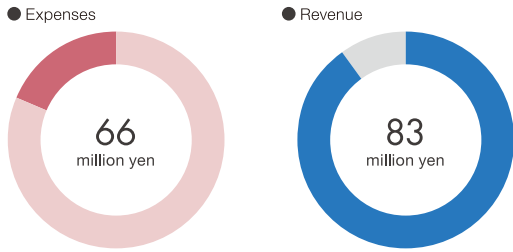
a consortium of four universities with Tongji University, Pusan National University, and the National University of Singapore.



Graduate School of Integrated Frontier Sciences

Initiatives for practical education through long-term internships

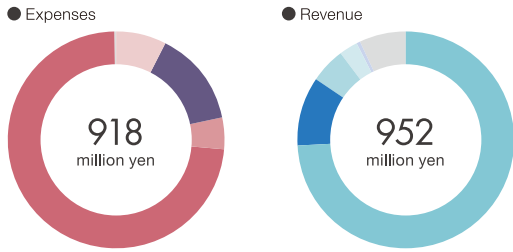
The Department of Automotive Science, which makes up the Graduate School of Integrated Frontier Sciences along with the Department of Kansei Science and the Department of Library Science, conducts the creation of new knowledge and development of human resources in forms transcending the boundaries of sciences and humanities in five areas (advanced material and chemistry science, dynamics, information and control, human science and social science). Since it was established in 2009, it has offered long-term internships (one month or more) with auto automobile manufacturers, etc., and conducted education with the aim of developing leaders in the business community. Students have been able to feel the once-in-a-century transformation taking place in the automobile industry, and dig down into research themes while refining their expertise in the workplace.



Faculty of Social and Cultural Studies / Graduate School of Integrated Sciences for Global Society

Initiatives for the "Sustainable Aqua-Human Environment" project

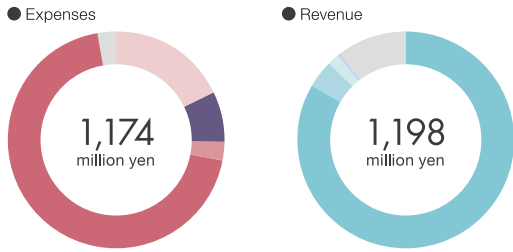
This Faculty and Graduate School, which commenced efforts aimed at research based on the keyword of "water" following the torrential rainfall that occurred in northern Kyushu in 2017, began working on the "Sustainable Aqua-Human Environment" project in FY2020. It aims to realize a society in which water, people and living organisms sustainably coexist by reducing water hazards and water risks. In FY2021, it was selected as a major scientific research project for a Grant-in-Aid for Transformative Research Areas A (FY2021-2025). It is envisaged that it will not only produce research results leading to implementation in society, but also conduct an educational program in the form of the "Sustainable Aqua-Human Environment Course."



Faculty of Arts and Science

Promotion of learning analytics

The promotion of learning analytics by the Faculty of Arts and Science Learning Analytics Center established in 2016 has accumulated results through research and development of educational improvement, operation in actual classes and swift coordination, leading to the establishment of the Kyushu University Learning Analytics Center as a university-wide organization in April 2021, accelerating implementation throughout the university. "Centralized Management of Educational Data and One-Stop Service" has been presented as the centerpiece of the initiative, and in FY2021, the centralized management of learning data managed on the M2B system with the syllabus course data and academic results data that were managed on separate systems enabled consistent analysis and implementation of all aspects from the status of learning to the results of learning for students throughout the entire university.



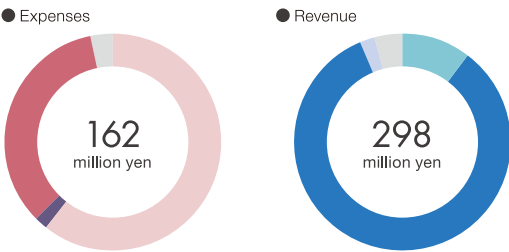
Expenses: Educational expenses Research expenses Medical treatment expenses Education and research support expenses Contract and joint research expenses, etc. Contract project expenses, etc. Personnel expenses Other

Revenue: Operating expenses grant income Revenues from student payments Revenues from the university hospital Contract and joint research revenues, etc. Revenues from donations Revenues from subsidies and other financial assistance Other

School of Interdisciplinary Science and Innovation

Implementation of Issue-based Collaborative Online International Learning (I-COIL)

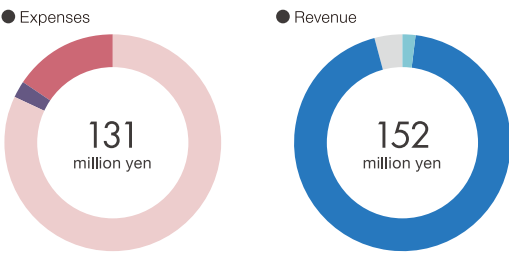
The School of Interdisciplinary Science and Innovation is engaged in its own I-COIL (Issue-based COIL) combining problem-solving-oriented learning and online collaborative learning, and is implementing short-term programs based on the theme of international social issues such as health, education and the global environment through coordination with Taipei Medical University, University of Taipei, University of Macau (China), Yad Vashem (Israel) and King Mongkut's University of Technology Thonburi (Thailand) that are schools with exchange agreements in FY2021. Furthermore, in FY2020 a partnership and cooperation agreement was concluded with Ritsumeikan Asia Pacific University, which has accepted many foreign students, and a joint class using I-COIL was started in FY2021 with the aim of establishing an educational model enabling cross-cultural learning in Japan, with faculty members and students from both universities collaborating.



Graduate School of Systems Life Sciences

Holding All Lab Poster Contest

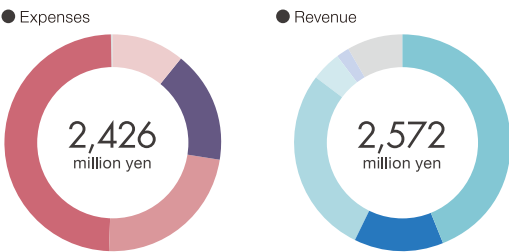
The Graduate School of Systems Life Sciences held the 16th All Lab Poster Contest. This project has begun based on the idea of a student of the Graduate School with the intention of discussing research with people in other fields by utilizing the characteristic of combining information science, engineering and life science, and is operated and held by students. It is planned to enable learning about different fields and to deepen exchanges between students by having students make poster presentations. Following on from last year, the contest was held online, with 19 students making poster presentations. Active discussion took place among students in different fields, and also between students and faculty members.



Faculty of Information Science and Electrical Engineering

Opening of Quantum Computing System Center

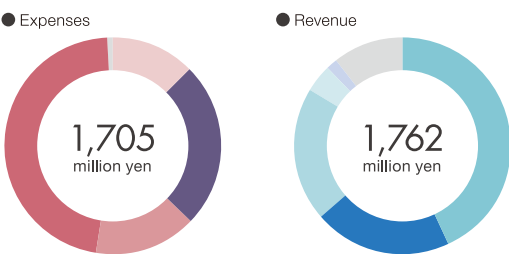
The Quantum Computing System Center was opened. Quantum computer research and development is entering a phase of "seeking its form to take as a tool that can be used in information processing." In order to face this challenge ahead of the rest of the world, the center has established the Quantum Computing Algorithm Section, Quantum Computing Software Section, Quantum Computing Architecture Section, Quantum Computing Device Section, and Quantum Computing Application Exploration and Social Cooperation Section to contribute to (1) exploring the ideal form of a quantum computer as an information processing platform, (2) exploring new qubits, (3) developing human resources that capture both quantum hardware and quantum software, and (4) developing social applications of quantum computing technology.



Faculty of Engineering Sciences

Promotion of partnerships with technical colleges

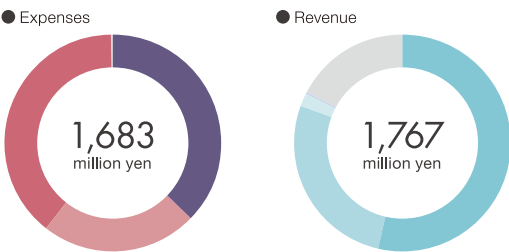
The Interdisciplinary Graduate School of Engineering Sciences has actively accepted students from graduate courses in technical colleges. In addition, the Department of Interdisciplinary Engineering of the School of Engineering where members of the Faculty play a central role will accept third year transfer students from graduate courses in nine technical colleges in Kyushu and Okinawa, starting a new partner educational program in April 2023 for the enhancement of educational content effectively utilizing the strengths of educational resources of both types of organization. Ahead of this, the Faculty holds periodic meetings with technical colleges and workshops for mutual understanding of the content of research.



Research Institute for Applied Mechanics

Transformation of the renewable energy dynamics

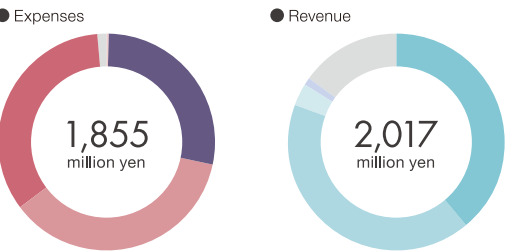
The Research Institute has played a central role ahead of the establishment of the Kyushu University Offshore Wind Research and Education Center in April 2022, which aims to become a world-leading hub for research and education on offshore wind power. At the end of FY2022, the Research Institute proceeded with plans to reorganize the Renewable Energy Center and the Division of Renewable Energy Dynamics to establish a new center specializing in research and development of offshore wind power and ocean energy, and a new division oriented toward research and development of energy conversion materials, devices and systems.



Medical Institute of Bioregulation

Implementation of Joint Usage/Research Center for the Multi-stratified Host Defense System

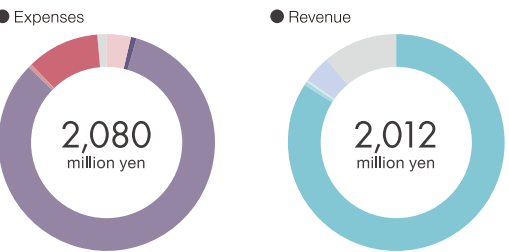
As a Multi-stratified Joint Usage/Research Center for the Multi-stratified Host Defense System, the institute was selected for and implemented/supported 68 joint research projects including one international joint research study (United Kingdom). Due to the problems presented by COVID-19, depending on the content of joint research, to eliminate the need for joint researchers to come to the Institute, they were asked to send measurement sample by express package delivery so staff at the center could perform measurement and return the data by e-mail or hard disk. Furthermore, in cases where there were restrictions on joint researchers coming to the Institute, consideration was given to improving interaction through Web conferencing and e-mail.



Research Institute for Information Technology / Cyber Security Center

Promotion of research combining high-performance computing and data science

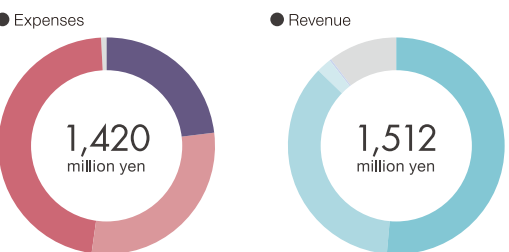
An invitation was received to give a lecture at the "Symposium on Explaining the Origins and Diversity of Cancer Using Big Data Analytics and Artificial Intelligence Technology" and a report titled "Equation Discovery without Prior Information" was given on the estimation of partial differential equations from observations and/or empirical data for effectively expressing that data, under conditions with as few restrictions as possible. The techniques developed are expected to have an impact on the proposal of new phenotypes and surrogate models for governing equations of phenomena, and applications not only to natural science phenomena, but also to social sciences.



Institute for Materials Chemistry and Engineering

Development of new water-soluble polymer with biocompatibility and temperature responsiveness

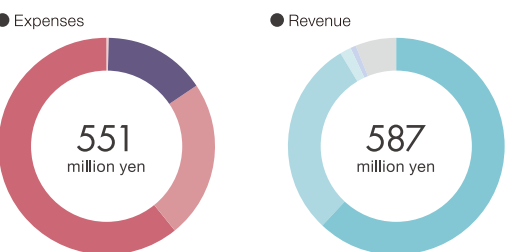
Using the motif of the chemical structure of polyoxazoline (POx), which is expected to be a biocompatible polymer to substitute polyethylene glycol (PEG), the Institute developed a biocompatible and temperature responsive polymer to substitute PEG and POx. The polymer a) is hemolytic, b) does not show cellular toxicity, and c) inhibits the clotting caused by adhesion and denaturing of plasma protein, showing very high biocompatibility. Furthermore, d) it also has temperature responsiveness changing solubility at around body temperature (37°C), and is a new polymer that will not only substitute PEG and POx, but can also be applied to early diagnosis of cancer and regenerative medicine.



Institute of Mathematics for Industry

Estimation technology based on theory and data of "how moves are affected by who is seen"

In joint research by the Institute of Mathematics for Industry (IMI) and Nagoya University, Riken, JST, Doshisha University, the University of Applied Sciences and Arts of Western Switzerland, the National Institute for Basic Biology and Tokai University, machine learning technology able to estimate interaction rules from multi-animal trajectories, such as "how moves are affected by who is seen," based on theory and data. Utilization of quantitative analysis methods that can be flexibly applied to many types of multi-animal groups using this technology is expected to lead to general rules on the movement of groups of a variety of living organisms including humans, and to the discovery of their diversity.

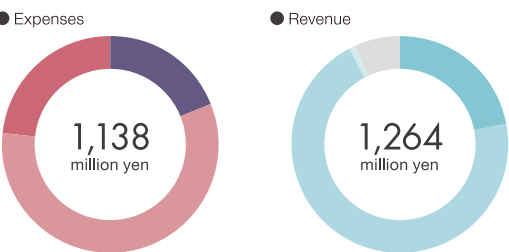


International Institute for Carbon-Neutral Energy Research (I2CNER)

Launch of the Mitsui Chemicals, Inc. - Carbon Neutral Research Center

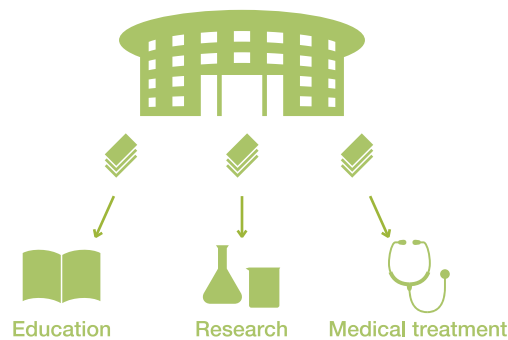
In November 2021, Mitsui Chemicals, Inc. - Carbon Neutral Research Center has launched within the International Institute for Carbon-Neutral Energy Research (I2CNER), Kyushu University. The Center is set to take the world-leading expertise that I2CNER has built up for carbon-neutral and carbon-negative technologies, including green hydrogen as well as carbon capture, utilization and storage (CCUS), and combine this with the development- and industrialization-related expertise that Mitsui Chemicals has built up in the

aim of getting its environmentally friendly technologies into practical use. This combination will then be used as the groundwork from which to conduct joint research. Further, by carrying out focused and efficient research into the elemental technologies needed to achieve carbon neutrality, the Center will speed up the process of getting these technologies adopted in society.

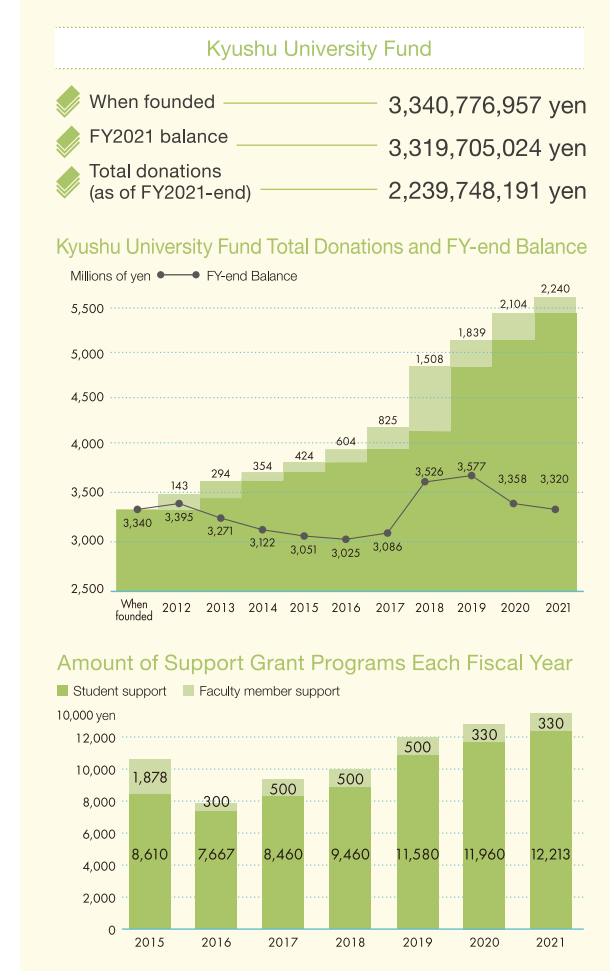


Kyushu University Fund Initiatives

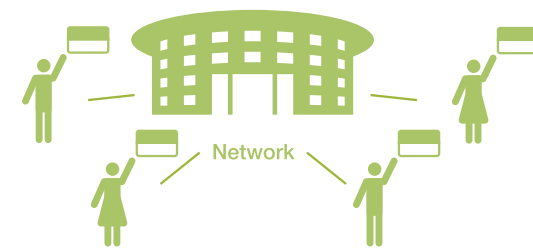
Kyushu University Fund



Kyushu University Fund was established in 2011 as part of the university's 100th anniversary. As a global academic leader, Kyushu University aims to lead the world in its quest for knowledge, to build a center that will open up a new century of knowledge, and to promote high-quality higher education supported by people around the world, and to advance research activities that truly contribute to humanity and society as a center for the pursuit, creation, and development of better knowledge. To achieve this objective, Kyushu University seeks to support education, research and medical treatment, and further establish and improve the environment for this.



Information on Kyudai Members



Kyushu University operates a "Kyudai Members" program for continuous donors of 2,000 yen or more per year and one-off donors of 10,000 yen or more.

Donations to the Kyushu University Fund

Anyone who wishes to support the university, including alumni, staff and parents of students, can become a Kyudai Member. In addition to single donations, it is also possible to provide ongoing support by setting a desired amount and cycle.

Issuance of Member Cards

A Kyudai Member card is issued to each Kyudai Member after confirmation of an application for a donation. The cards have been issued since FY2013, and approximately 7,500 Kyudai Members support the Kyushu University Fund as of the end of FY2021. Furthermore, the membership system was revised in June 2022, and Kyudai Members were separated into three tiers (Kyudai Member, Contributing Member and Honorary Member). There are plans to provide appealing benefits for each tier in the future.



Benefits for Kyudai Members

The university provides a variety of benefits, such as the use of facilities on and off campus of Kyushu University, and discounts for the use of partner stores and facilities. Efforts will be made to update benefits to improve them to please members. The latest information is shown on the Kyushu University Fund website. Please support the university and become a Kyudai Member.

Use of on- and off-campus facilities

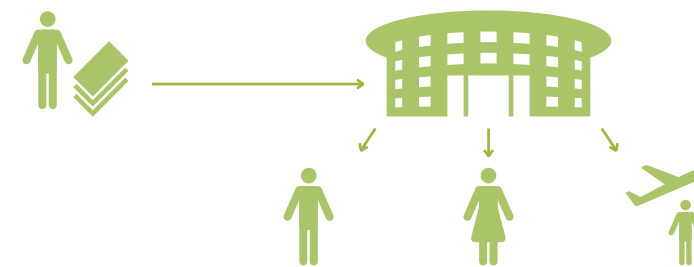


Tax incentives

- Income tax deductions can be received for donations.
- The Study Support Program Fund is subject to tax deduction. (Tax deduction: A system for increasing the amount of tax reductions due to small donations)
- If donations to the university are designated as deductible under local government ordinances, deductions from resident tax may be received.
- Donations from corporations are designated donations for which the entire amount is recognized for inclusion in deductible expenses under the Corporation Tax Act.

Types of Donations

General Donations



General donations not specifying a particular purpose are used primarily for support grant programs targeted at students. As students often do not have ample funds, donations provide them with a lifeline. Comments from some of the students who received support are introduced here.

Yamakawa Prize and Grant

This is a prize named after Kenjiro Yamakawa, the university's first president. It provides a grant of 1 million yen per year for the minimum duration of enrollment at the university for undergraduate students who aspire to the superior humanity, social responsibility, global citizenship and specialized knowledge set forth in the Kyushu University Education Charter and have excellent academic results. In FY2021, a total of 30 million yen was provided to 30 students.

Student comment

5th Year, Department of Medicine, School of Medicine
Tomomi Miyazaki



▲ Lemonade stand for pediatric cancer support

Have you ever heard the term "cancer survivorship?" Due to the advances being made in cancer treatment, the number of people returning to society after diagnosis and treatment of cancer is increasing year by year, and it is believed that cancer survivors will further increase as progress is made in medicine. Cancer survivorship is the approach of cancer survivors working with the surrounding people and society to overcome the various issues that they face after being diagnosed with cancer, and I am conducting activities promoting cancer survivorship. Going forward, my goal is to promote not only activities to raise awareness of cancer prevention, but also awareness-raising activities focused on life after cancer diagnosis, and propose the establishment of a system for supporting the lives of cancer survivors.

Challenge & Creation

Unique research and investigation projects are designed and planned based on the youthful sensibility of graduate and undergraduate students, who provide opportunities to learn the joy of being creative by implementing these themselves. In FY2021, nine projects were selected with an upper limit of 500,000 yen per project.

Student comment

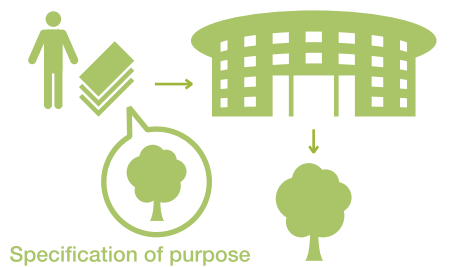
4th Year, Department of Mechanical Engineering, School of Engineering
Michimasa Suto



▲ Success in experiment releasing a balloon over the ocean

to achieve flight in line with simulations. As a result, we were able to release the balloon in Kochi Prefecture, Fukuoka Prefecture and Ehime Prefecture, achieve flight generally along the simulated flight path, and successfully recover the balloon in all experiments.

Donations for a Specific Purpose



Specification of purpose

Donations from donors with a specific purpose are accepted as donations for a specific purpose.

"Kyushu University Ukrainian Student and Researcher Support Fund"

In May 2022, the Kyushu University Fund established a "Kyushu University Ukrainian Student and Researcher Support Fund" to accept students and researchers who belong to Ukrainian universities, etc., and have difficulty continuing their studies and research due to the invasion of Ukraine by Russia, and to provide support to continue their studies and research.

Following that, the Fund started support for students and researchers who were accepted in the second semester of FY2022.



"Study Support Program Fund"

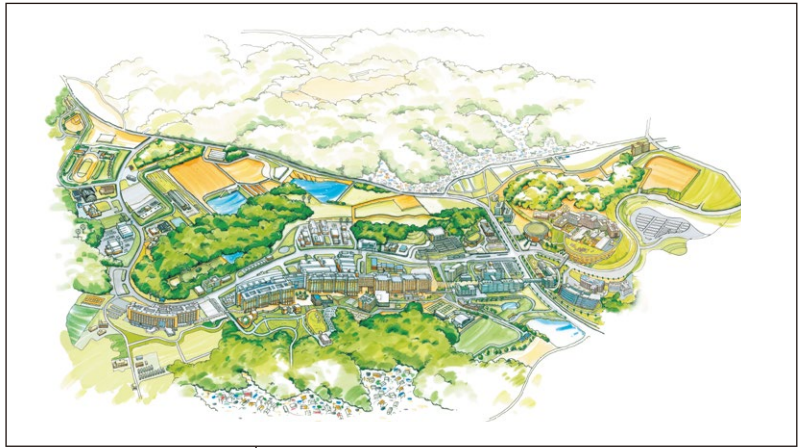
This is a fund for supporting undergraduate students with excellent academic results who require financial assistance. Around 30 students selected each year are provided with the "Kyushu University Study Support Scholarship" of up to 30,000 yen per month per person, which does not need to be repaid.

In addition, there are numerous projects with specific purposes underway, such as projects for the anniversary of the undergraduate school. See the following website for details.

Inquiries	Endowment Section, Alumni and Endowment Management Division, General Affairs Department
See the Kyushu University Fund website for details. Contact the following number if you have any inquiries. TEL.: +81-92-802-2150	
Kyushu University Fund	Search

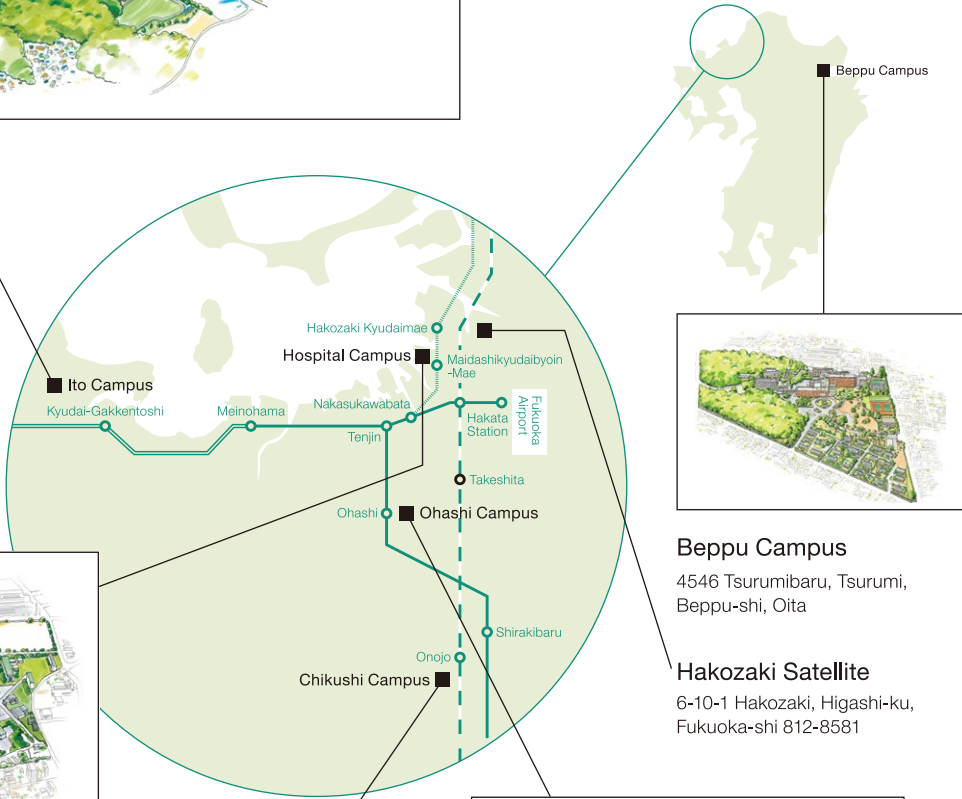
Campus Profiles

Campuses with unique character support diverse activities.



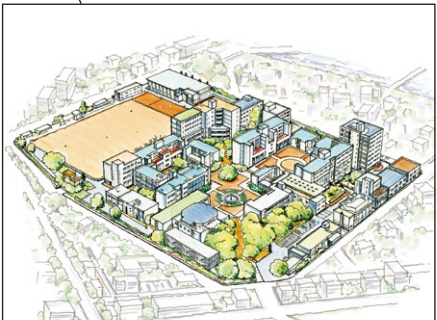
Ito Campus
Relocation to the Ito Campus began in 2005 and was completed in 2018 after over a decade. At present, it is the largest campus of Kyushu University, with approximately 19,000 students and faculty members. It is a campus that serves as a “comprehensive research center” not seen anywhere else in the world, boasting coexistence with the natural environment and the provision of a model for society of the near future such as research and development on hydrogen energy and fuel cells.
744 Motooka, Nishi-ku, Fukuoka-shi 819-0395

Hospital Campus
The Hospital Campus is an education, research and medical treatment hub housing medical departments and Kyushu University Hospital, training medical personnel who will handle future medical treatment, and developing and providing advanced medical treatment.
3-1-1 Maidashi, Higashi-ku, Fukuoka-shi 812-8582



Beppu Campus
4546 Tsurumibaru, Tsurumi, Beppu-shi, Oita
Hakozaiki Satellite
6-10-1 Hakozaiki, Higashi-ku, Fukuoka-shi 812-8581

Chikushi Campus
The Chikushi Campus is an education and research hub with a variety of research facilities conducting advanced research with the aim of realizing a society in harmony with material, the environment and energy.
6-1 Kasuga-koen, Kasuga-shi 816-8580



Ohashi Campus
The Ohashi Campus is an education and research hub for design integrating art and scientific technology, which was created through the integration with Kyushu Institute of Design in 2003.
4-9-1 Shiobaru, Minami-ku, Fukuoka-shi 815-8540

